



**NOTE: Parts are no longer available for this tool.**

**The manual will continue on the next page.**

**SIoux****TOOLS**

## Parts List for No's. 470 & 471

### AIR SCREW DRIVER

(UP TO SERIAL 9000)

Furnish Catalog, Serial and Model Number When Ordering Parts

Fig- ure	Part No.	Name	Fig- ure	Part No.	Name
1	35041	Bail—Front	35	33895	Control—Output (Up to Serial 6000)
2	06501	Screw—#8 (4)		43156	Control—Output (Serial 6001 & Up)
3	09712	Washer—Lock #8 (8)	36	44104	Cylinder
4	35058	Support—Hammer Case (Up to Serial 7500)	38	33896	Ass'm.—Reversing Valve (Up to Serial 6000)
5	44660	Ring—Guide (470)		14311	Ring—"O" (Up to Serial 6000 on 33896)
	44239	Ring—Guide (471)		43159	Ass'm.—Reversing Valve (Serial 6001 & Up)
6	10318	Ball—Steel (470)	39	14291	Ring—"O" (2)
	10299	Ball—Steel (2) (471)	40	44115	Driver—Reversing Valve
7	30258	Seal—Garlock		14291	Ring—"O" (up to Serial 6000)
8	10411	Bushing—Steel (Up to Serial 7500)	41	14369	Ring—"O" (Serial 2001 & up)
	10411A	Bushing—Steel (Serial 7501 & up)	42	33991	Ass'm.—Oiler Screw (Serial 2001 & up)
9	30235	Pin—Roll		30312	Plug—Pipe (Up to Serial 2000)
10	33883	Ass'm.—Hammer Case	43	44100	Bushing—Reducing
11	14334	Ring—"O" (2)	44	21417	Spring
12	35094	Washer (Serial 2001 & Up)	45	33993	Screen—Air
	35046	Washer (Up to Serial 2000)	46	21401	Spring
13	21404	Spring—Hammer	47	09960	Rivet
*14	44309	Cam—Spindle	48	30325	Pin (2)
15	10291	Ball—Steel	49	14325	Valve—Rubber
16	10203	Bearing—Ball	50	25957	Washer
17	44736	Frame—Hammer	51	33892	Ass'm.—Valve
18	43158	Housing (Up to Serial 6000)	52	33928	Ass'm.—Valve Seat
	43157	Housing (Serial 6001 & Up)	53	14047	Pin—Lock (Up to Serial 6000)
19	10241	Bearing—Ball	54	33881	Trigger
20	33789	Plate—Front End	*55	11527	Hammer—Auxiliary
21	33940	Vane—Rotor (Set of 6)	56	35093	Washer—Split (2) (Serial 2001 & up)
22	30375	Fitting—Grease	*57	44742	Anvil (470)
23	44103	Ass'm.—Rotor		44743	Anvil (471)
24	30424	Pin—Alignment	58	44161	Retainer—Ball (470)
25	33792	Plate—Rear End		44238	Retainer—Ball (471)
26	10219	Bearing—Ball	59	21406	Spring (470)
27	14744	Gasket		21414	Spring (471)
28	12592	Cap—Housing (Up to Serial 6000)	60	21501	Ring—Retainer (470)
	43149	Cap—Housing (Serial 6001 & up)		21520	Ring—Retainer (471)
29	14753	Washer	61	14351B	Protector—Rubber (470)
30	06603	Screw—#8 (4)		14351G	Protector—Rubber (471)
31	44139	Cap—Grease	62	10303	Ball (Serial 6001 & up)
32	30379	Pin (Up to Serial 6000)	63	21392	Spring (Serial 6001 & up)
	30336	Pin (Serial 6001 & Up)	64	44106	Insert—Hex (4)
33	44136	Knob—Output Control (Up to Serial 6000)	65	10203	Bearing—Ball
	44395	Knob—Output Control (Serial 6001 & Up)			
34	14290	Ring—"O" (Up to Serial 6000)			
	14373	Ring—"O" (Serial 6001 & Up)			

\*When ordering for units with serial number under 2001, order kit No. 43530 for No. 470 and kit No. 43531 for No. 471.

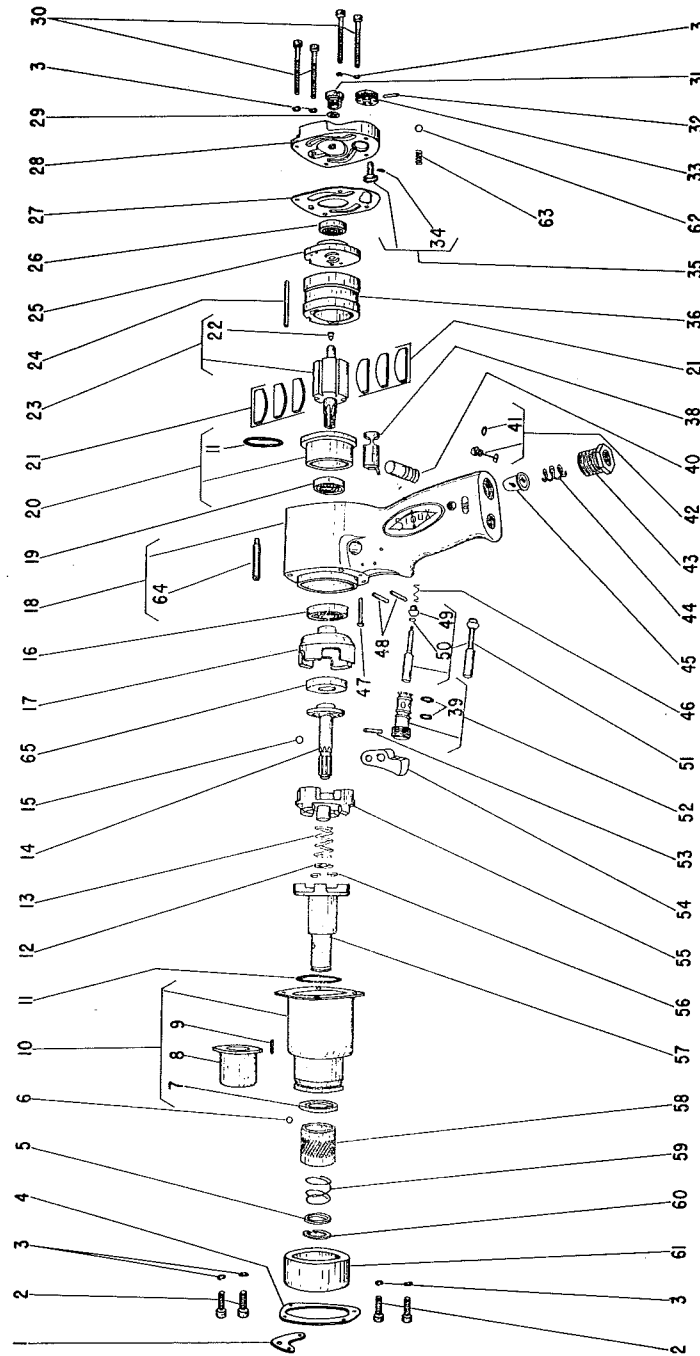
**SIoux TOOLS INC.**  
SIoux CITY, IOWA, U.S.A. 51102

# SIoux



# TOOLS

## Parts List for No's. 470 & 471 AIR SCREW DRIVER (UP TO SERIAL 9000)



Furnish Catalog, Serial and Model Number When Ordering Parts

This pdf incorporates the following model numbers:

470, 471