



NOTE: Parts are no longer available for this tool.

The manual will continue on the next page.

SIoux**TOOLS**

Parts List for No's. 473 & 474

AIR IMPACT WRENCH

(SERIAL 9001 & UP)

Furnish Catalog, Serial and Model Number When Ordering Parts

Fig- ure	Part No.	Name	Fig- ure	Part No.	Name
1	35041	Bail—Front	37	43159	Ass'm.—Reversing Valve
2	06501	Screw—#8 (4)	*38	14291	Ring—"O" (2)
3	09712	Washer—Lock #8 (8)	39	44115	Driver—Reversing Valve
* 5	30258	Seal	*40	14369	Ring—"O"
6	10424	Bushing	41	33991	Ass'm.—Oiler Screw
7	30471	Pin	42	44100	Bushing—Reducing
8	33883	Ass'm.—Hammer Case	43	21417	Spring
* 9	14334	Ring—"O" (2)	44	33993	Screen
10	35093	Washer—Split (Set of 2)	45	30325	Pin (2)
11	35094	Washer	46	21401	Spring
12	21404	Spring—Hammer	47	09960	Rivet
13	44309	Cam—Spindle	* 48	14325	Valve—Rubber
14	10291	Ball—Steel	49	35311	Washer
15	10203	Bearing—Ball	50	33892	Ass'm.—Valve
16	44736	Frame—Hammer	51	33928	Ass'm.—Valve Seat
17	43157	Housing	53	33881	Trigger
18	10241	Bearing—Ball	54	11558	Hammer—Auxiliary
19	43533	Plate—Front End	58	33465	Ass'm.—Socket Retainer (473)
* 20	33940	Vane—Rotor (Set of 6)		33985	Ass'm.—Socket Retainer (474)
21	30375	Fitting—Grease	59	43524	Ass'm.—Anvil (473)
22	44103	Ass'm.—Rotor		43525	Ass'm.—Sp. 2" Longer Anvil (473)
23	30424	Pin—Alignment		43526	Ass'm.—Anvil (474)
24	43532	Plate—Rear End		43527	Ass'm.—Sp. 2" Longer Anvil (474)
25	10219	Bearing—Ball	60	14351	Protector—Rubber (473)
* 26	14744	Gasket		14351G	Protector—Rubber (474)
27	43149	Cap—Housing	61	10303	Ball
28	06603	Screw—#8 (4)	62	21392	Spring
29	44139	Cap—Grease	63	44106	Insert—Hex. (4)
* 30	14753	Washer	64	44673	Bearing—Steel
31	30336	Pin	65	10306	Ball—Steel
32	44395	Knob—Output Control	66	30473	Seal—Garlock
* 33	14373	Ring—"O"	67	35186	Spacer
34	43156	Control—Output			
35	44737	Cylinder			

*These parts included in Tune-Up Set No. 43903

SIoux TOOLS INC.
SIoux CITY, IOWA, U.S.A. 51102

SIoux

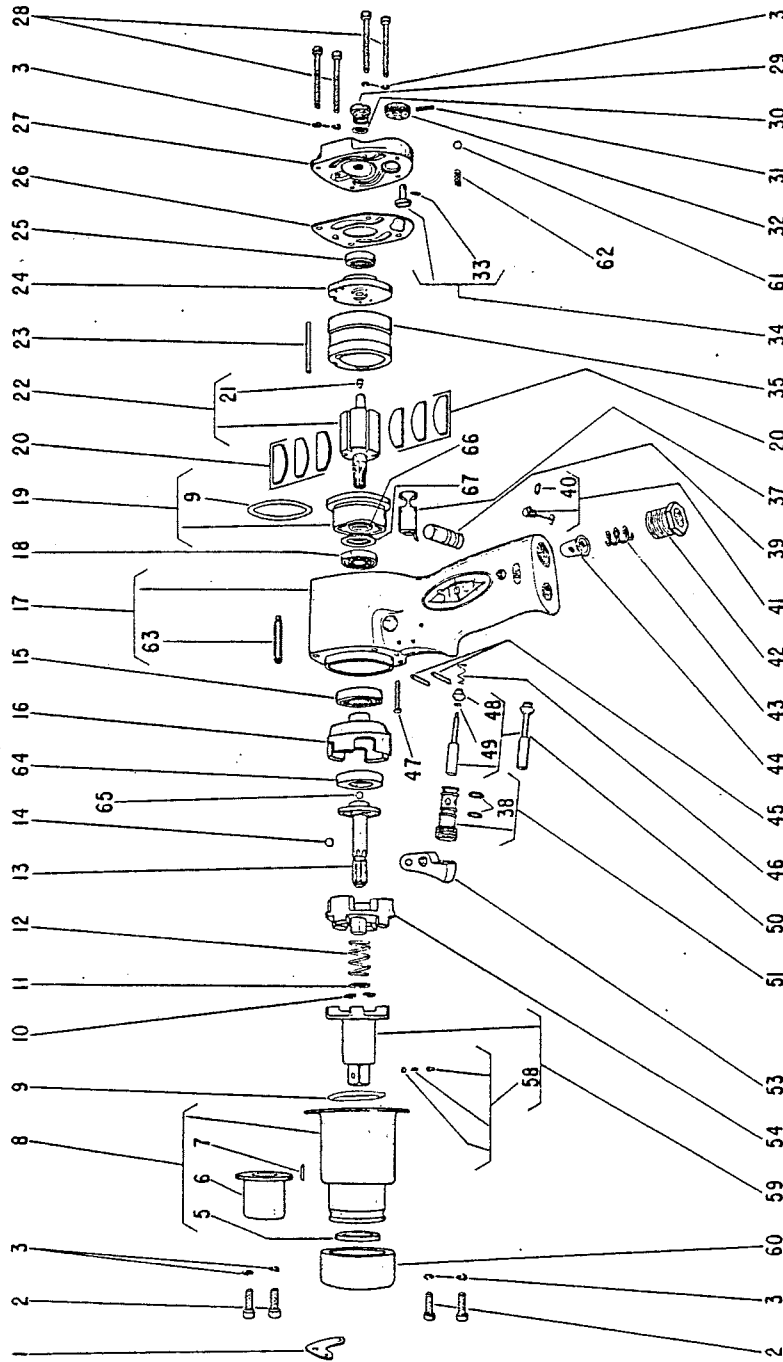


TOOLS

Parts List for No's. 473 & 474

AIR IMPACT WRENCH

(SERIAL 9001 & UP)



Furnish Catalog, Serial and Model Number When Ordering Parts

This pdf incorporates the following model numbers:

473, 474