



NOTE: Parts are no longer available for this tool.

The manual will continue on the next page.

SIoux**TOOLS**

**Parts List for No's. 473 & 474
AIR IMPACT WRENCH
(UP TO SERIAL 9000)**

Furnish Catalog, Serial and Model Number When Ordering Parts

Fig- Part ure No.	Name	Fig- Part ure No.	Name
1	35041 Bail—Front	34	33895 Control—Output (Up to Serial 6000)
2	06501 Screw—#8 (4)		43156 Control—Output (Serial 6001 & up)
3	09712 Washer—Lock #8 (8)	35	44104 Cylinder
4	35058 Support—Hammer Case (Up to Serial 7500)	37	33896 Ass'm.—Reversing Valve (Up to Serial 6000)
5	30258 Seal		14311 Ring—"O" (Up to Serial 6000 on 33896)
6	10411 Bushing (Up to Serial 7500)		43159 Ass'm.—Reversing Valve (Serial 6001 & up)
	10411A Bushing (Serial 7501 & up)	38	14291 Ring—"O" (2)
7	30235 Pin (Up to Serial 9000)	39	44115 Driver—Reversing Valve
	30471 Pin (Serial 9001 & up)		14291 Ring—"O" (up to Serial 6000)
8	33883 Ass'm.—Hammer Case	40	14369 Ring—"O" (Serial 2001 & up)
9	14334 Ring—"O" (2)	41	33991 Ass'm.—Oiler Screw (Ser. 2001 & up)
10	35093 Washer—Split (Set of 2) (Serial 2001 & up)		30312 Plug—Pipe (Up to Serial 2000)
11	35094 Washer (Serial 2001 & up)	42	44100 Bushing—Reducing
	35046A Washer (Up to Serial 2000)	43	21417 Spring
12	21404 Spring—Hammer	44	33993 Screen
*13	44309 Cam—Spindle	45	30325 Pin (2)
14	10291 Ball—Steel	46	21401 Spring
15	10203 Bearing—Ball	47	09960 Rivet
16	44097 Frame—Hammer	48	14325 Valve—Rubber
17	43158 Housing (Up to Serial 6000)	49	25957 Washer
	43157 Housing (Serial 6001 & up)	50	33892 Ass'm.—Valve
18	10241 Bearing—Ball	51	33928 Ass'm.—Valve Seat
19	33789 Plate—Front End	52	14047 Pin—Lock (Up to Serial 6000)
20	33940 Vane—Rotor (Set of 6)	53	33881 Trigger
21	30375 Fitting—Grease	*54	11527 Hammer—Auxiliary
22	44103 Ass'm.—Rotor	58	33465 Ass'm.—Socket Retainer (473)
23	30424 Pin—Alignment		33985 Ass'm.—Socket Retainer (474)
24	33792 Plate—Rear End	59	*43524 Ass'm.—Anvil (473)
25	10219 Bearing—Ball		43525 Ass'm.—Sp. 2" Longer Anvil (473)
26	14744 Gasket (Serial 6001 & up)		*43526 Ass'm.—Anvil (474)
	14744A Gasket (up to serial 6000)		43527 Ass'm.—Sp. 2" Longer Anvil (474)
27	12592 Cap—Housing (Up to Serial 6000)	60	14351 Protector—Rubber (473)
	43149 Cap—Housing (Serial 6001 & up)		14351G Protector—Rubber (474)
28	06603 Screw—#8 (4)	61	10303 Ball (Serial 6001 & up)
29	44139 Cap—Grease	62	21392 Spring (Serial 6001 & up)
30	14753 Washer	63	44106 Insert—Hex. (4)
31	30379 Pin (Up to Serial 6000)	64	10203 Bearing—Ball (up to Serial 9000)
	30336 Pin (Serial 6001 & up)		44673 Bearing—Steel (Ser. 9001 & up)
32	44136 Knob—Output Control (Up to Serial 6000)	65	10306 Ball—Steel (serial 9001 & up)
	44395 Knob—Output Control (Serial 6001 & up)		
33	14290 Ring—"O" (Up to Serial 6000)		
	14373 Ring—"O" (Serial 6001 & up)		

*When ordering for units with Serial Number under 2001, Order Kit No. 43528 for No. 473 and Kit No. 43529 for No. 474.

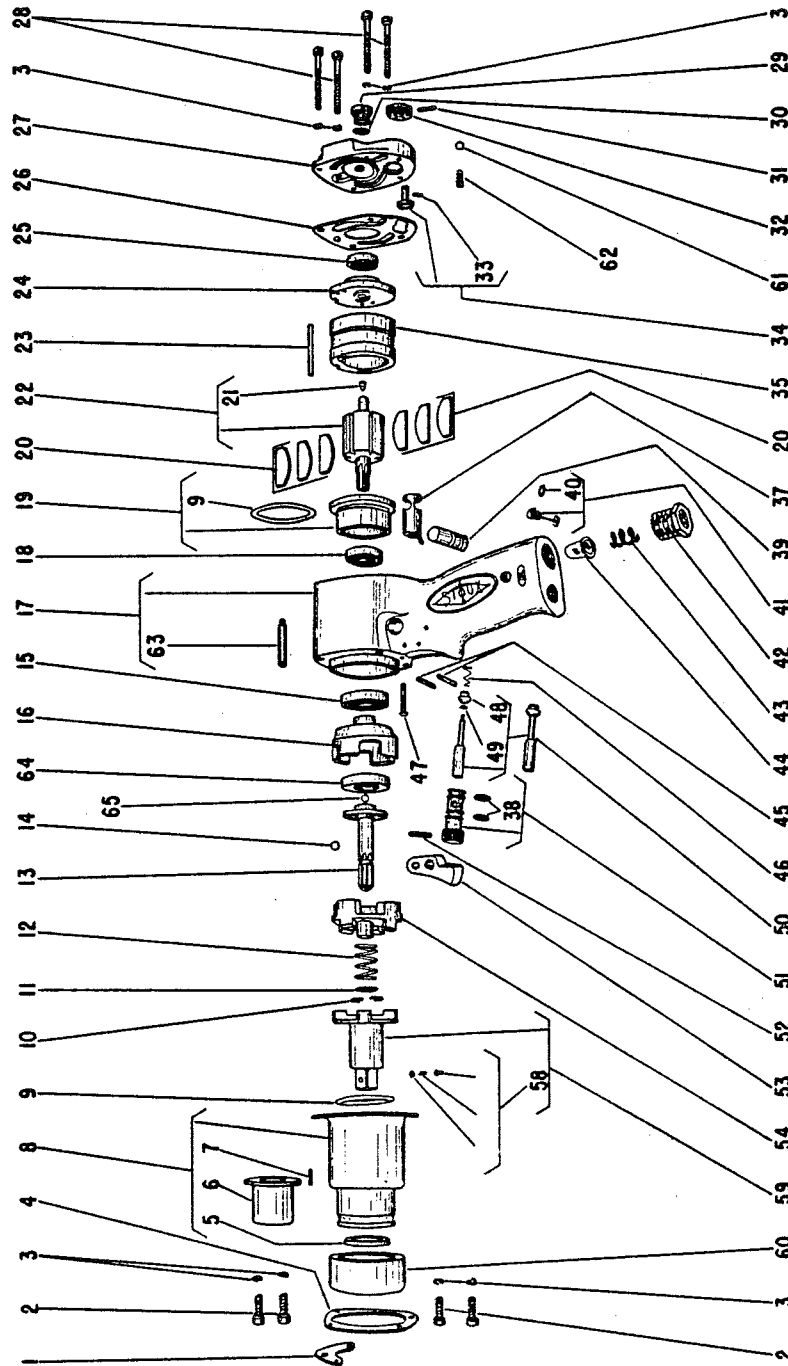
**SIoux TOOLS INC.
SIoux CITY, IOWA, U.S.A. 51102**

SIoux



TOOLS

Parts List for No's. 473 & 474 AIR IMPACT WRENCH (UP TO SERIAL 9000)



Furnish Catalog, Serial and Model Number When Ordering Parts

This pdf incorporates the following model numbers:

473, 474