



**NOTE: Parts are no longer available for this tool.**

**The manual will continue on the next page.**

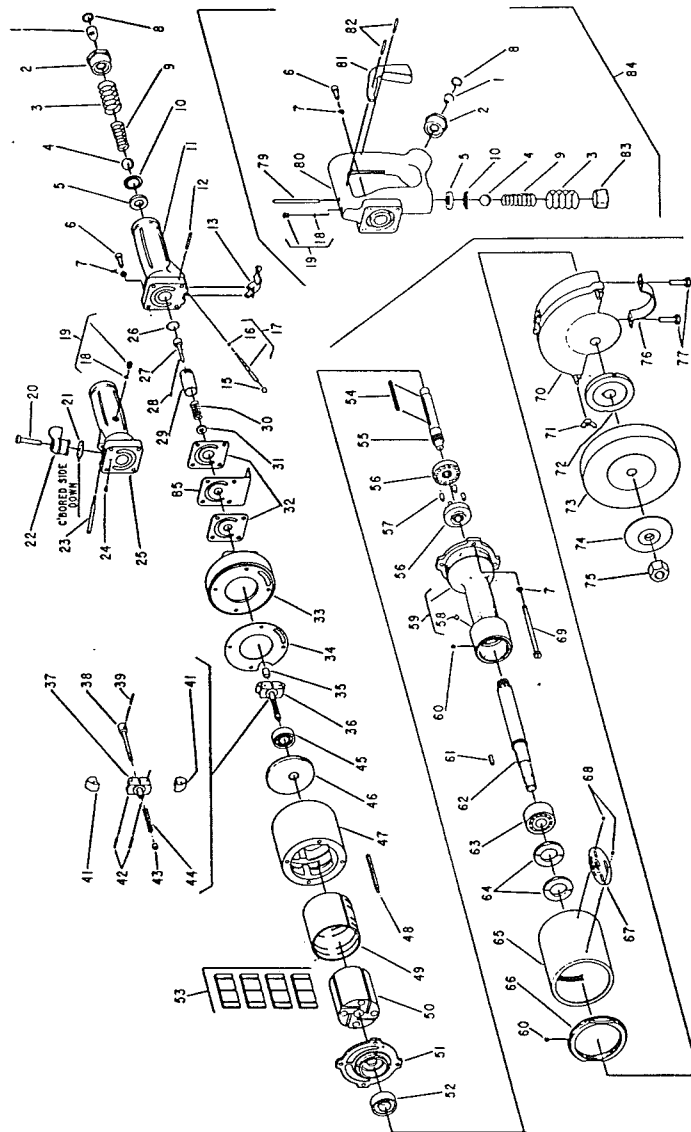


**SIoux  
TOOLS INC.**

2901 FLOYD BOULEVARD ■ SIOUX CITY, IOWA 51102 ■

Form A160D  
Dated 12/90

## Parts List For No. 541 HORIZONTAL AIR GRINDER (SER. NO'S. STARTING WITH "D")



Furnish Catalog, Serial and Model Number When Ordering Parts

# Parts List For No. 541 HORIZONTAL AIR GRINDER

## SER. NO'S. STARTING WITH "D")

Furnish Catalog, Serial and Model Number When Ordering Parts

| Fig-<br>ure | Part<br>No. | Name   | Fig-<br>ure | Part<br>No. | Description  |
|-------------|-------------|--|-------------|-------------|--|
| 1           | 33736       | Screen   | 42          | 30362       | Pin—Roll (2)*  |
| 2           | 33843       | Ass'm.—Bushing & Retainer  | 43          | 13164       | Nut—Governor Adjusting   |
| 3           | 21396       | Spring   | 44          | 21399       | Spring—Governor (4500 R.P.M.) (Black)  |
| 4           | 10294       | Ball—Steel   |             | 21389       | Spring—Governor (6000 R.P.M.) (Green)  |
| 5           | 14344       | Seat—Throttle Valve  | 45          | 10234       | Bearing—Ball   |
| 6           | 08232       | Screw [1/4-20x5/8 (4)*]<br>(Thumb and Grip Handle)                                       | 46          | 33855       | Plate—Top End  |
|             | 08288       | Screw [1/4-20x7/8 (4)*] (Lever Handle)   | 47          | 12760       | Housing  |
| 7           | 09750       | Washer—Lock 1/4" (8)*  | 48          | 44059       | Key—Cylinder   |
| 8           | 21512       | Ring—Retaining   | 49          | 44061       | Cylinder   |
| 9           | 21418       | Spring—Tapered   | 50          | 44063       | Rotor  |
| 10          | 44011       | Retainer—Seat  | 51          | 33857       | Plate—Front End  |
| 11          | 33735       | Handle—Lever Throttle  | 52          | 10195       | Bearing—Ball   |
| 12          | 44042       | Pin  | 53          | 33864       | Vane—Rotor (Set of 4)  |
| 13          | 35009       | Lever—Throttle   | 54          | 44060       | Key—Rotor  |
| 15          | 14039       | Button—Throttle  | 55          | 44070       | Spindle—Rotor  |
| 16          | 14349       | Ring—"O"   | 56          | 44021       | Coupling (2)*  |
| 17          | 33848       | Ass'm.—Plunger & "O" Ring  | 57          | 14033       | Pin—Drive (12)*  |
| 18          | 14369       | Ring—"O"   | 58          | 30356       | Fitting—Grease   |
| 19          | 44253       | Ass'm.—Oiler Screw & "O" Ring  | 59          | 12757       | Housing—Spindle  |
| 20          | 44141       | Pivot  | 60          | 07002       | Screw—Safety (2)*  |
| 21          | 54377       | Plate—Wear   | 61          | 24095       | Key—Flange   |
| 22          | 53446       | Ass'y.—Lever & Cam   | 62          | 44069       | Spindle—Tool   |
| 23          | 44251       | Plunger—Valve  | 63          | 10140       | Bearing—Ball   |
| 24          | 07186       | Screw—#10  | 64          | 24092       | Retainer—Bearing (2)*  |
| 25          | 33994       | Handle—Thumb Throttle  | 65          | 44064       | Cover—Housing  |
| 26          | 14345       | Ring—"O"   | 66          | 44065       | Nut—Cover Lock   |
| 27          | 34994       | Valve—Governor (Lever & Thumb Handle)  | 67          | 20301       | Plate—Name (4500 R.P.M.)   |
|             | 44539       | Valve—Governor (Grip Handle)   |             | 20300       | Plate—Name (6000 R.P.M.)   |
| 28          | 30355       | Pin  | 68          | 09900       | Rivet—Steel (2)*   |
| 29          | 13167       | Body—Governor Valve  | 69          | 08297       | Screw—Hex Hd. 1/4"-20 Thd. (4)*  |
| 30          | 21385       | Spring—Valve   | 70          | Cat. 2314   | Guard—Complete Wheel (6000 R.P.M.)   |
| 31          | 35010       | Retainer—Spring  |             | Cat. 2315   | Guard—Complete Wheel (4500 R.P.M.)   |
| 32          | 14799       | Gasket (Lever & Thumb Handle)  | 71          | 09520       | Nut—Wing 1/4" (2)* (Use With Cat. 2314 & 2315)                                       |
|             | 14745       | Gasket (Grip Handle)   | 72          | 44066       | Flange—Inside  |
| 33          | 53713       | Housing—Gov. [Lev. (2)* & Thb. Handle (1)]<br>[Incl's. Fig. 7 (4) & 69 (4) 1/4"-20 Thd.] | 73          | Cat. 567    | Wheel—Grinding (6000 R.P.M.)   |
|             | 53714       | Housing—Gov. (Grip Handle) [Incl's. Fig. 7 (4) &<br>69 (4) 1/4"-20 Thd.]                 |             | Cat. 573    | Wheel Grinding (4500 R.P.M.)   |
| 34          | 14743       | Gasket   | 74          | 44067       | Flange   |
| 35          | 44546       | Connector (Thumb Handle)   | 75          | 09665       | Nut—5/8"   |
|             | 65134       | Connector—Governor (Lever Handle)  | 76          | 25834       | Clamp—Guard  |
|             | 44547       | Connector—Governor (Grip Handle)   | 77          | 08775       | Screw—5/16" (2)*   |
| 36          | 43374       | Ass'm.—Governor (4500 R.P.M.)  |             | 09770       | Washer—Lock 5/16" (2)*   |
|             | 43375       | Ass'm.—Governor (6000 R.P.M.)  | 79          | 44158       | Plunger—Valve  |
| 37          | 34996       | Body—Governor  | 80          | 33909       | Ass'm.—Grip Handle   |
| 38          | 43273       | Spindle—Governor   | 81          | 33944       | Ass'm.—Trigger   |
| 39          | 30452       | Pin—Roll   | 82          | 30347       | Pin (2)*   |
| 41          | 11514       | Weight—Governor (2)* (4500 & 6000 R.P.M.)  | 83          | 30381       | Plug—Pipe  |
|             |             |  | 84          | 43632       | Set—Grip Handle (Includes Fig. 7 (4) 26 thru 35,<br>38 & 69 (4) [With 1/4"-20 Thd.]) |
|             |             |  | 85          | 65133       | Rest—Tool (Lever Handle)   |

\*Order Quantity As Needed



## SIoux TOOLS INC.

2901 FLOYD BOULEVARD ■ SIOUX CITY, IOWA 51102 ■

PRINTED IN U.S.A.

This pdf incorporates the following model numbers:

541