



**NOTE: Parts are no longer available for this tool.**

**The manual will continue on the next page.**



## Parts List for No. 541 HORIZONTAL AIR GRINDER

(SER. NO. 5269 & UP ON 4500 R.P.M.)

(SER. NO. 5246 & UP ON 6000 R.P.M.)

Furnish Catalog, Serial and Model Number When Ordering Parts

Fig- ure	Part No.	Name	Fig- ure	Part No.	Name
1	33736	Screen	42	30362	Pin—Roll (2)
2	33843	Ass'm.—Bushing & Retainer	43	13164	Nut—Governor Adjusting
3	21396	Spring	44	21399	Spring—Governor (4500 R.P.M.) (Black)
4	10294	Ball—Steel		21389	Spring—Governor (6000 R.P.M.) (Green)
5	14344	Seat—Throttle Valve	45	10234	Bearing—Ball
6	08232	Screw— $\frac{1}{4}$ " (4)	46	33855	Plate—Top End
7	09750	Washer—Lock $\frac{1}{4}$ " (8)	47	12760	Housing
8	21512	Ring—Retaining	48	44059	Key—Cylinder
9	21418	Spring—Tapered	49	44061	Cylinder
10	44011	Retainer—Seat	50	44063	Rotor
11	33735	Handle—Lever Throttle	51	33857	Plate—Front End
12	44042	Pin	52	10195	Bearing—Ball
13	35009	Lever—Throttle	53	33864	Vane—Rotor (Set of 4)
15	14039	Button—Throttle	54	44060	Key—Rotor
16	14349	Ring—"O"	55	44070	Spindle—Rotor
17	33848	Ass'm.—Plunger & "O" Ring	56	44021	Coupling (2)
18	14369	Ring—"O"	57	14033	Pin—Drive (12)
19	43553	Ass'm.—Oiler Screw & "O" Ring	58	30356	Fitting—Grease
20	44141	Pivot	59	12757	Housing—Spindle
21	54377	Plate—Wear	60	07002	Screw—Safety (2)
22	53434	Ass'y.—Lever & Cam Kit (Incl's. Fig. 21) (Up To Ser. No's. Starting with "B")	61	24095	Key—Flange
	53446	Ass'y.—Lever & Cam (Ser. No's. Starting with "B")	62	44069	Spindle—Tool
23	44251	Plunger—Valve	63	10140	Bearing—Ball
24	07186	Screw—#10	64	24092	Retainer—Bearing (2)
25	33994	Handle—Thumb Throttle	65	44064	Cover—Housing
26	14345	Ring—"O"	66	44065	Nut—Cover Lock
27	34994	Valve—Governor (Lever & Thumb Handle)	67	20301	Plate—Name (4500 R.P.M.)
	44539	Valve—Governor (Grip Handle)		20300	Plate—Name (6000 R.P.M.)
28	30355	Pin	68	09900	Rivet—Steel (2)
29	13167	Body—Governor Valve	69	08273	Screw— $\frac{1}{4}$ " (4)
30	21385	Spring—Valve	70	Cat. 2314	Guard—Complete Wheel (6000 R.P.M.)
31	35010	Retainer—Spring		Cat. 2315	Guard—Complete Wheel (4500 R.P.M.)
32	14799	Gasket (Lever & Thumb Handle)	71	09520	Nut—Wing $\frac{1}{4}$ " (2) (Use with Cat. 2314 & 2315)
	14745	Gasket (Grip Handle)	72	44066	Flange—Inside
33	12759	Housing—Governor (Lever & Thumb Handle)	73	Cat. 567	Wheel—Grinding (6000 R.P.M.)
	12764	Housing—Governor (Grip Handle)		Cat. 573	Wheel—Grinding (4500 R.P.M.)
34	14743	Gasket	74	44067	Flange
35	44546	Connector—Governor (Lever & Thumb Handle)	75	09665	Nut— $\frac{3}{8}$ "
	44547	Connector—Governor (Grip Handle)	76	25834	Clamp—Guard
36	43374	Ass'm.—Governor (4500 R.P.M.)	77	08775	Screw— $\frac{5}{16}$ " (2)
	43375	Ass'm.—Governor (6000 R.P.M.)		09770	Washer—Lock $\frac{5}{16}$ " (2)
37	34996	Body—Governor	79	44158	Plunger—Valve
38	43273	Spindle—Governor	80	33909	Ass'm.—Grip Handle
39	30452	Pin—Roll	81	33944	Ass'm.—Trigger
41	11514	Weight—Governor (2) (4500 & 6000 R.P.M.)	82	30347	Pin (2)
			83	30381	Plug—Pipe
			84	43632	Kit—Grip Handle (Includes Fig. 26 thru 35 and 38)

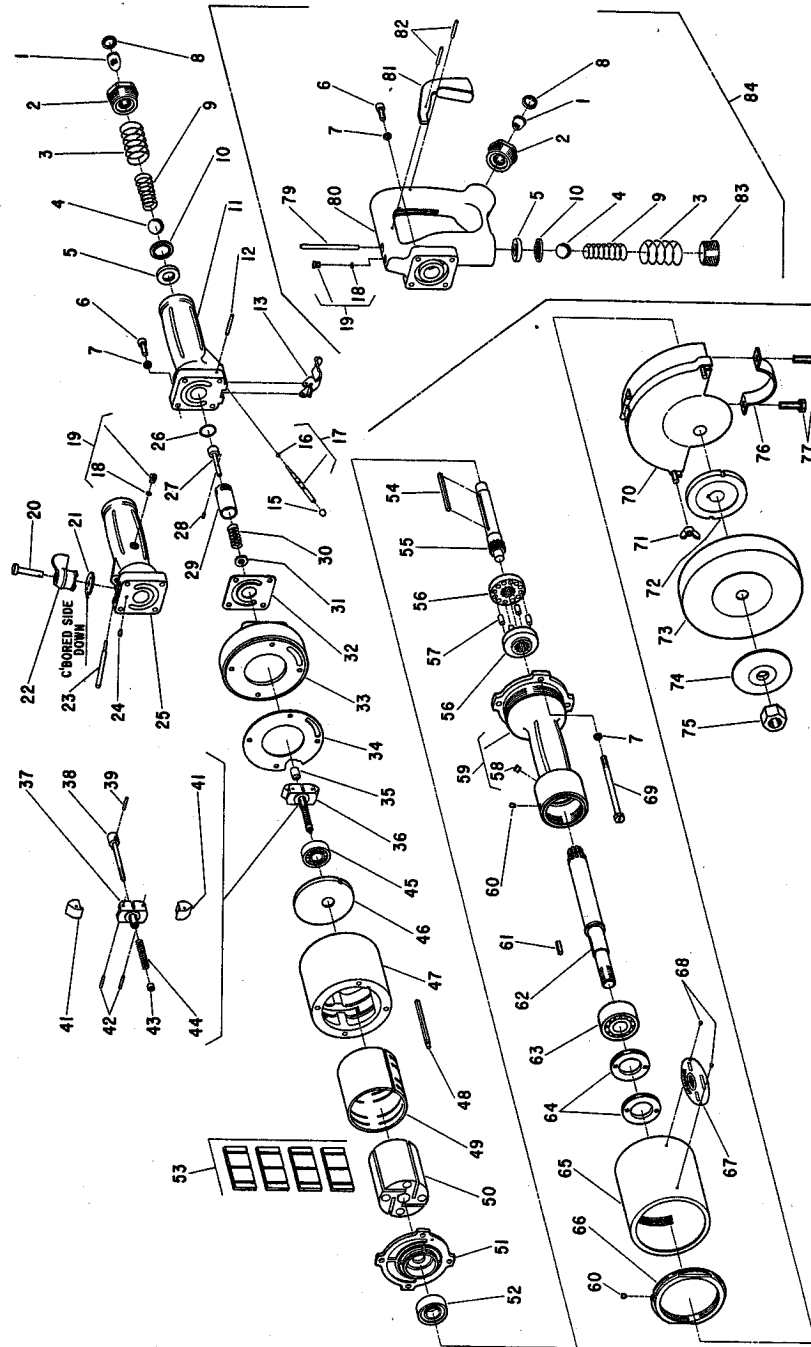
53412 Kit to convert Grinder to Lever Throttle Handle

**SIoux TOOLS INC.**  
SIoux CITY, IOWA, U.S.A. 51102

# Parts List for No. 541 HORIZONTAL AIR GRINDER

(SER. NO. 5269 & UP ON 4500 R.P.M.)

(SER. NO. 5246 & UP ON 6000 R.P.M.)



Furnish Catalog, Serial and Model Number When Ordering Parts

This pdf incorporates the following model numbers:

541