



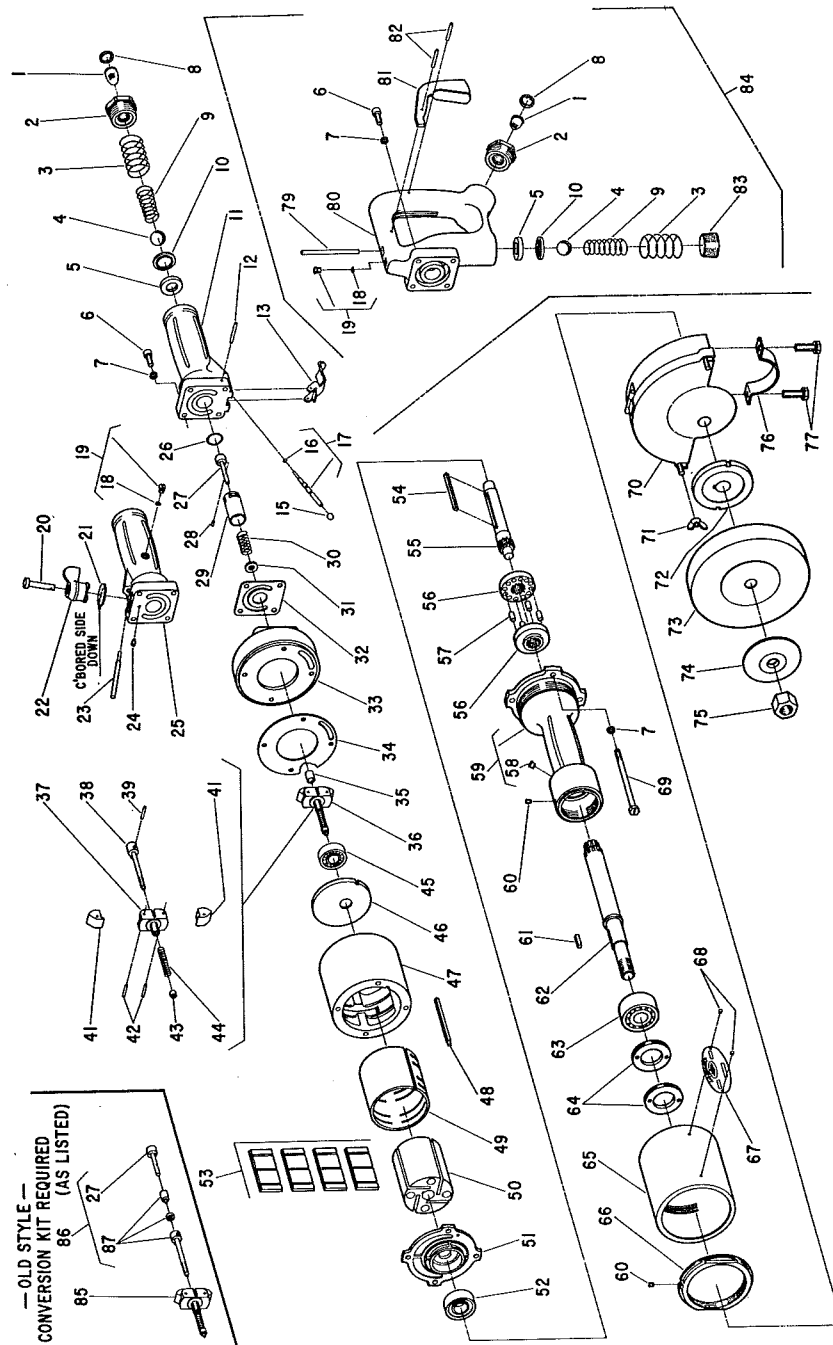
NOTE: Parts are no longer available for this tool.

The manual will continue on the next page.

Parts List for No. 541 HORIZONTAL AIR GRINDER

(Up to Ser. No. 5268 on 4500 R.P.M.)

(Up to Ser. No. 5245 on 6000 R.P.M.)



Furnish Catalog, Serial and Model Number When Ordering Parts

SIoux



TOOLS

Parts List for No. 541

HORIZONTAL AIR GRINDER

(Up to Ser. No. 5268 on 4500 R.P.M.)

(Up to Ser. No. 5245 on 6000 R.P.M.)

Furnish Catalog, Serial and Model Number When Ordering Parts

Figure	Part No.	Name	Figure	Part No.	Name
1	33736	Screen	45	10234	Bearing—Ball
2	33843	Ass'm.—Bushing & Retainer	46	33855	Plate—Top End
3	21396	Spring	47	12760	Housing
4	10294	Ball—Steel	48	44059	Key—Cylinder
5	14344	Seat—Throttle Valve	49	44061	Cylinder
6	08232	Screw—1/4" (4)*	50	44063	Rotor
7	09750	Washer—Lock 1/4" (8)*	51	33857	Plate—Front End
8	21512	Ring—Retaining	52	10195	Bearing—Ball
9	21418	Spring—Tapered	53	33864	Vane—Rotor (Set of 4)
10	44011	Retainer—Seat	54	44060	Key—Rotor
11	33735	Handle—Lever Throttle	55	44070	Spindle—Rotor
		Not Illustrated	56	44021	Coupling (2)*
	21392	Spring—Lock (2)* (Up To Ser. 4096)	57	14033	Pin—Drive (12)*
	10303	Ball—Steel (2)* (Up To Ser. 4096)	58	30356	Fitting—Grease
	44008	Plunger—Lock (Up To Ser. 4096)	59	12757	Housing—Spindle
12	44042	Pin	60	07002	Screw—Safety (2)*
13	35009	Lever—Throttle	61	24095	Key—Flange
15	14039	Button—Throttle	62	44069	Spindle—Tool
16	14349	Ring—"O"	63	10140	Bearing—Ball
17	33848	Ass'm.—Plunger & "O" Ring	64	24092	Retainer—Bearing (2)*
18	14369	Ring—"O"	65	44064	Cover—Housing
19	43553	Assy.—Oiler Screw & "O" Ring	66	44065	Nut—Cover Lock
	30246	Plug—Pipe	67	20301	Plate—Name (4500 R.P.M.)
20	44141	Pivot		20300	Plate—Name (6000 R.P.M.)
21	54377	Plate—Wear	68	09900	Rivet—Steel (2)*
22	53434	Ass'm.—Lever — Cam Kit (Incl's. Fig. 21)	69	08273	Screw—1/4"-28 (4)*
23	44251	Plunger—Valve	70	Cat. 2314	Guard—Complete Wheel (6000 R.P.M.)
24	07186	Screw—#10		Cat. 2315	Guard—Complete Wheel (4500 R.P.M.)
25	33994	Handle—Thumb Throttle	71	09520	Nut—Wing 1/4" (2)* (Use with Cat. 2314 & 2315)
26	14345	Ring—"O"	72	44066	Flange—Inside
†27	34994	Valve—Gov. (Avail. individually on ALL Units equipped with Lever or Thumb Handle or Grip Handles not converted)	73	Cat. 567	Wheel—Grinding (6000 R.P.M.)
				Cat. 573	Wheel—Grinding (4500 R.P.M.)
	44539	Valve—Gov. (Grip Handle—Use indiv. only on converted units)	74	44067	Flange
28	30355	Pin	75	09665	Nut—5/8"
29	13167	Body—Governor Valve	76	25834	Clamp—Guard
30	21385	Spring—Valve	77	08775	Screw—5/16" (2)*
31	35010	Retainer—Spring		09770	Washer—Lock 5/16" (2)*
32	14799	Gasket (Lever & Thumb Handle)	79	44158	Plunger—Valve
	14745	Gasket (Grip Handle)	80	33909	Ass'm.—Grip Handle
33	53713	Housing—Gov. (Lev. & Thb. Handle) [Incl's. Fig. 7(4) & 69(4) 1/4"-20 Thd.]	81	33944	Ass'm.—Trigger
	53714	Housing—Gov. (Grip Handle) [Incl's. Fig. 7(4) & 69(4) 1/4"-20 Thd.]	82	30347	Pin (2)*
34	14743	Gasket	83	30381	Plug—Pipe
†35	44546	Connector—Gov. (Lever & Thumb Handle)	84	43632	Set—Grip Handle (Includes Fig. 7(4) 26 thru 35, 38 & 69(4) [With 1/4"-20 Thd.])
	44547	Connector—Gov. (Grip Handle)	85	33766	Set—Gov. Assy. (4500 R.P.M.) (Incl. Fig. 35 & 36)
†36	43374	Assy.—Governor (4500 R.P.M.)		33811	Set—Gov. Assy. (6000 R.P.M.) (Incl. Fig. 35 & 36)
	43375	Assy.—Governor (6000 R.P.M.)		33949	Set—Gov. Assy. (Grip Handle—4500 R.P.M.) (Incl. Fig. 27, 35 & 36)
37	34996	Body—Governor		33950	Set—Gov. Assy. (Grip Handle—6000 R.P.M.) (Incl. Fig. 27, 35 & 36)
†38	43273	Spindle—Governor	86	53188	Set—Gov. Spindle Conversion (Grip Handle) (Incl. Fig. 27, 35 & 38)
†39	30452	Pin—Roll	87	53189	Set—Gov. Spindle Conversion (Lever & Thumb Handle) (Incl. Fig. 35 & 38)
41	11514	Weight—Governor (2)* (4500 & 6000 R.P.M.)			
42	30362	Pin—Roll (2)*			
43	13164	Nut—Governor Adjusting			
44	21399	Spring—Governor (4500 R.P.M.) (Black)			
	21389	Spring—Governor (6000 R.P.M.) (Green)			

†Parts available individually on units which have been converted from parts as illustrated in Figure No. 87

*Order Quantity As Needed

SIoux TOOLS INC.

53412 Set to convert Grinder to Lever Throttle Handle from Thumb Throttle

2801-2999 FLOYD BOULEVARD ■ SIOUX CITY, IOWA 51102 ■

PRINTED IN U.S.A.

This pdf incorporates the following model numbers:

541