



NOTE: Parts are no longer available for this tool.

The manual will continue on the next page.

SIoux**TOOLS**

Parts List for Nos. D-532, D-533, D-534

VERTICAL AIR GRINDER & SANDER

(Up to Serial 3581)

Furnish Catalog, Serial and Model Number When Ordering Parts

Fig- ure	Part No.	Name	Fig- ure	Part No.	Name
1	44006	Swivel—Governor	*36	14345	Ring—"O"
2	10233	Bearing—Ball	37	30246	Plug—Pipe
3	30349	Pin—Roll		33991	Ass'm.—Oiler Screw & Chain
4	43365	Spindle—Governor	38	33735	Ass'm.—Throttle Handle
6	11514	Weight—Governor (2) (4500 & 6000 R.P.M.)	39	21396	Spring
	44088	Weight—Governor (3500 R.P.M.) (2)	40	33843	Ass'm.—Bushing Retainer
7	30362	Pin—Roll (2)	41	33736	Screen
8	34996	Body—Governor	42	21512	Retainer—Ring
9	21390	Spring—Governor (6000 R.P.M.)	43	21418	Spring—Tapered
	21389	Spring—Governor (3500 & 4500 R.P.M.)	44	10294	Ball—Steel
10	13164	Nut—Governor Adjusting	45	44011	Retainer—Seat
11	08273	Stud (4)	*46	14344	Seat—Throttle Valve
12	12758	Housing—Governor	47	10303	Ball—Steel (2) (Up to Serial 3340)
13	33809	Ass'm.—Governor (6000 R.P.M.)	48	21392	Spring—Lock (2) (Up to Serial 3340)
	33810	Ass'm.—Governor (4500 R.P.M.)	49	44008	Plunger—Lock (Up to Serial 3340)
	33767	Ass'm.—Governor (3500 R.P.M.)	50	35009	Lever—Throttle
14	10234	Bearing—Ball	51	33775	Plate—Throttle Lever
15	33855	Plate—Upper End	52	44042	Pin
16	12761	Housing	53	13165	Sleeve (Up to Serial 3340)
	34976	Button—Wear		13178	Sleeve (Serial 3341 & up)
17	12257	Handle	54	14349	Ring—"O"
18	09750	Washer—Lock 1/4" (13)	55	33848	Ass'm.—Plunger & "O" Ring
19	08232	Screw 1/4" (9)	56	13167	Body—Valve
20	44059	Key—Cylinder	57	21385	Spring—Valve
21	44061	Cylinder	*58	14039	Button—Lever Throttle
*22	33864	Vane—Rotor (Set of 4)	59	33856	Plate—Lower End
23	44063	Rotor	60	44060	Key—Rotor
24	09501	Nut 1/4" (8)	61	44062	Spindle
25	44057	Cap	62	10235	Bearing—Ball
26	34986	Flange—Drive	63	44083	Flange—Locking
27	30369	Pin	67	07179	Screw #10
28	30347	Pin	69	44141	Pivot
*29	14742	Gasket	70	33995	Ass'm.—Lever & Cam
30	34989	Lever—Governor	71	35078	Plate—Wear
31	44058	Lever—Governor Valve	72	44251	Plunger—Valve
*32	14738	Gasket—Handle	73	33994	Handle—Thumb Throttle
33	30355	Pin	*74	14369	Ring—"O"
34	35010	Retainer—Spring	75	33991	Ass'm.—Oiler Screw & Chain
35	34994	Valve—Governor		20293	Plate—Name (6000 R.P.M.)
				20316	Plate—Name (4500 R.P.M.)
				20317	Plate—Name (3500 R.P.M.)
				06000	Screw #2 (4)

*These parts included in Tune-Up Set No. 43908

ALBERTSON & COMPANY, Inc.

SIoux CITY, IOWA, U.S.A. 51102

SIoux

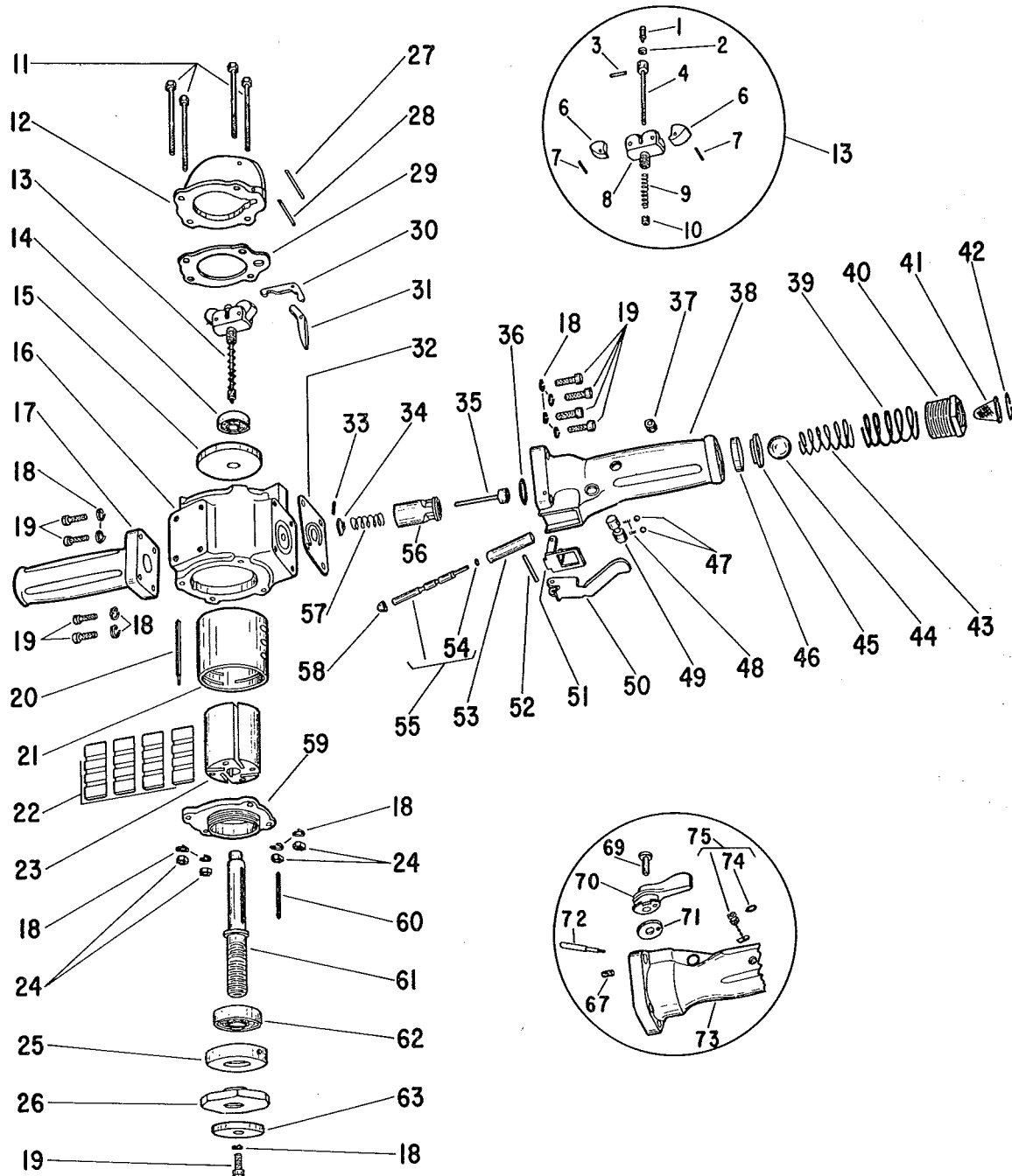


TOOLS

Parts List for Nos. D-532, D-533, D-534

VERTICAL AIR GRINDER & SANDER

(Up to Serial 3581)



Furnish Catalog, Serial and Model Number When Ordering Parts

This pdf incorporates the following model numbers:

D-532, D-532, D-534