



**NOTE: Parts are no longer available for this tool.**

**The manual will continue on the next page.**

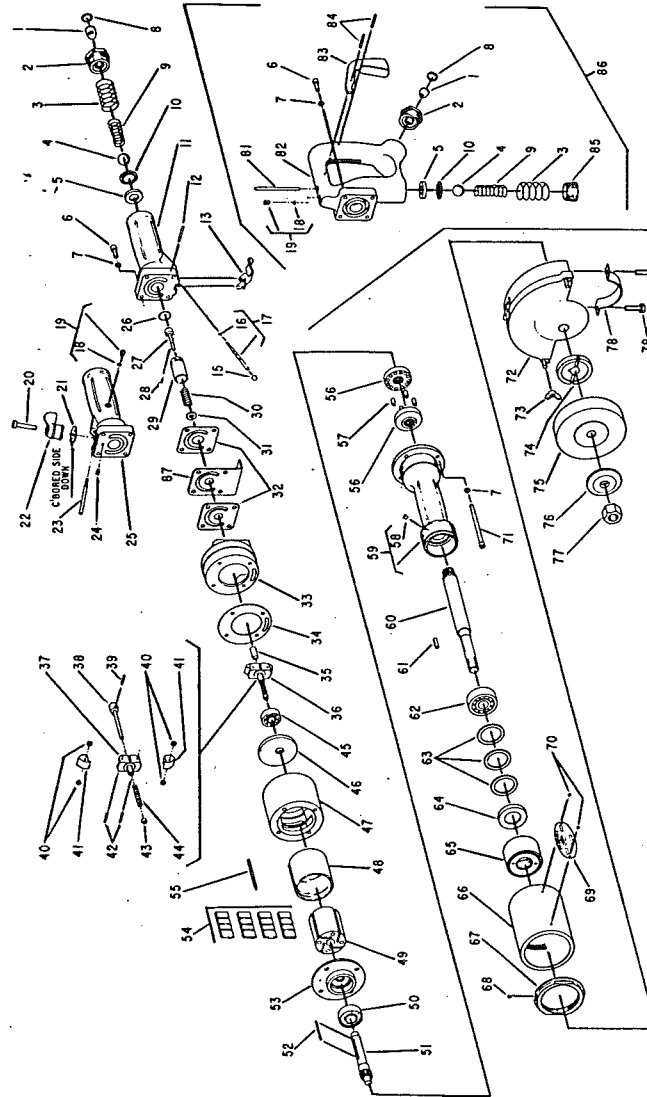


**SIoux**  
**TOOLS INC.**

2901 FLOYD BOULEVARD ■ SIOUX CITY, IOWA 51102 ■

Form A153E  
Dated 12/90

## Parts List For No. 517 HORIZONTAL AIR GRINDER (SER. NO'S. STARTING WITH "E")



Furnish Catalog, Serial and Model Number When Ordering Parts

# Parts List For No. 517 HORIZONTAL AIR GRINDER SER. NO'S. STARTING WITH "E")

Furnish Catalog, Serial and Model Number When Ordering Parts

Fig- ure	Part No.	Name	Fig- ure	Part No.	Description
1	33736	Screen	42	30362	Pin—Roll (2)*
2	33843	Ass'm.—Bushing & Retainer	43	13164	Nut—Governor Adjusting
3	21396	Spring	44	21390	Spring—Governor (4500, 6000 & 9000 R.P.M.) (Brown)
4	10294	Ball—Steel	45	10175	Bearing—Ball
5	14344	Seat—Throttle Valve	46	33734	Plate—Top End
6	08232	Screw [1/4-20x5/8 (4)*] (Thumb and Grip Handle)	47	12755	Housing
	08288	Screw [1/4-20x7/8 (4)*] (Lever Handle)	48	34984	Cylinder
7	09750	Washer—Lock 1/4" (8)*	49	34985	Rotor
8	21512	Ring—Retaining	50	10195	Bearing—Ball
9	21418	Spring—Tapered	51	44023	Spindle—Rotor
10	44011	Retainer—Seat	52	34992	Key—Rotor
11	33735	Handle—Lever Throttle	53	33851	Plate—Front End
12	44042	Pin	54	33837	Vane—Rotor (Set of 4)
13	35009	Lever—Throttle	55	34991	Key—Cylinder
15	14039	Button—Throttle	56	44021	Coupling (2)*
16	14349	Ring—"O"	57	14033	Pin—Drive (12)*
17	33848	Ass'm.—Plunger & "O" Ring	58	30356	Fitting—Grease
18	14369	Ring—"O"	59	12348	Housing—Spindle
19	44253	Ass'm.—Oiler Screw & "O" Ring	60	44022	Spindle—Tool
20	44141	Pivot	61	24095	Key—Flange
21	54377	Plate—Wear	62	10126	Bearing—Ball
22	53446	Ass'y.—Lever & Cam	63	35152	Washer—Wave (3)*
23	44251	Plunger—Valve	64	54064	Spacer
24	07186	Screw—#10	65	54063	Cap
25	33994	Handle—Thumb Throttle	66	44026	Cover—Housing
26	14345	Ring—"O"	67	44024	Nut—Cover Lock
27	34994	Valve—Governor (Lever & Thumb Handle)	68	07002	Screw—Safety
	44539	Valve—Governor (Grip Handle)	69	20299	Plate—Name (4500 R.P.M.)
28	30355	Pin		20298	Plate—Name (6000 R.P.M.)
29	13167	Body—Governor Valve		20297	Plate—Name (9000 R.P.M.)
30	21385	Spring—Valve	70	09900	Rivet—Steel (2)*
31	35010	Retainer—Spring	71	08296	Screw 1/4"-20x3 1/2" (4)*
32	14799	Gasket [(Lever (2) & Thumb Handle (1)) Gasket (Grip Handle)]	72	Cat. 2314	Guard—Complete Wheel (4500 & 6000 R.P.M.)
33	53694	Housing—Governor (Lever & Thumb Handle) Includes Fig. 71 [(4) 1/4"-20"x3 1/2"] & Fig. 7 (4)		Cat. 2313	Guard—Complete Wheel (9000 R.P.M.)
	53696	Housing—Governor (Grip Handle) [Includes Fig. 71 [(4) & 1/4"-20"x3 1/2"] & Fig. 7 (4)]	73	09520	Nut—Wing 1/4" (2)* (Use with Cat. 2314)
34	14739	Gasket		09448	Nut—Wing #6 (2)* (Use with Cat. 2313)
35	44544	Connector—Gov. (Thumb Handle)	74	24090	Flange—Inside
	65134	Connector—Gov. (Lever Handle)	75	Cat. 567	Wheel—Grinding (4500 & 6000 R.P.M.)
	44547	Connector—Gov. (Grip Handle)		Cat. 565	Wheel Grinding (9000 R.P.M.)
36	43370	Ass'm.—Governor (4500 R.P.M.)	76	24103	Flange
	43371	Ass'm.—Governor (6000 R.P.M.)	77	09665	Nut—5/8"
	43372	Ass'm.—Governor (9000 R.P.M.)	78	25834	Clamp—Guard
37	34996	Body—Governor	79	08775	Screw—5/16" (2)*
38	43273	Spindle—Governor		09770	Washer—Lock 5/16" (2)*
39	30452	Pin—Roll	81	44158	Plunger—Valve
40	44037	Spacer—Gov. Weight (4)* (9000 R.P.M.)	82	33909	Ass'm.—Grip Handle
41	11514	Weight—Governor (2)* (4500 & 6000 R.P.M.)	83	33944	Ass'm.—Trigger
	11517	Weight—Gov. (2)* (9000 R.P.M.)	84	30347	Pin
			85	30381	Plug—Pipe
			86	53086	Set—Grip Handle (Includes Fig. 7 (4) 26 thru 35, 38 & 71 (4) [With 1/4"-20 Thd.])
			87	65133	Rest-Tool (Lever Handle)

\*Order Quantity As Needed

## SIOUX TOOLS INC.

2901 FLOYD BOULEVARD ■ SIOUX CITY, IOWA 51102 ■

PRINTED IN U.S.A.

This pdf incorporates the following model numbers:

517