



NOTE: Parts are no longer available for this tool.

The manual will continue on the next page.

SIoux



TOOLS

Parts List for No. 517 HORIZONTAL AIR GRINDER (Up To Serials Starting With "B")

Furnish Catalog, Serial and Model Number When Ordering Parts

Fig-ure	Part No.	Name	Fig-ure	Part No.	Name
1	33736	Screen	44	21399	Spring—Gov. (4500 R.P.M.) (Black)
2	33843	Ass'm.—Bushing & Retainer		21390	Spring—Gov. (6000 & 9000 R.P.M.) (Brown)
3	21396	Spring	45	10175	Bearing—Ball
4	10294	Ball—Steel	46	33734	Plate—Top End
5	14344	Seat—Throttle Valve	47	12755	Housing
6	08232	Screw— $\frac{1}{4}$ " (4)*	48	34984	Cylinder
7	09750	Washer—Lock $\frac{1}{4}$ " (8)*	49	34985	Rotor
8	21512	Ring—Retaining	50	10195	Bearing—Ball
9	21418	Spring—Tapered	51	44023	Spindle—Rotor
10	44011	Retainer—Seat	52	34992	Key—Rotor
11	33735	Handle—Lever Throttle	53	33851	Plate—Front End
12	44042	Pin	54	33837	Vane—Rotor (Set of 4)
13	35009	Lever—Throttle	55	34991	Key—Cylinder
15	14039	Button—Throttle	56	44021	Coupling (2)*
16	14349	Ring—"O"	57	14033	Pin—Drive (12)*
17	33848	Ass'm.—Plunger & "O" Ring	58	30356	Fitting—Grease
18	14369	Ring—"O"	59	53072	Kit—Spindle Housing (Also replaces Fig. 63)
19	43553	Assy.—Oilier Screw & "O" Ring	60	44022	Spindle—Tool
	30246	Plug—Pipe	61	24095	Key—Flange
20	44141	Pivot	62	10126	Bearing—Ball
21	54377	Plate—Wear	63	24092	Retainer—Bearing (2)*
22	53434	Ass'm.—Lever & Cam Kit (Incl's Fig. 21)	66	44026	Cover—Housing
23	44251	Plunger—Valve	67	44024	Nut—Cover Lock
24	07186	Screw—#10	68	07002	Screw—Safety (2)*
25	33994	Handle—Thumb Throttle	69	20299	Plate—Name (4500 R.P.M.)
26	14345	Ring—"O"		20298	Plate—Name (6000 R.P.M.)
27	33994	Valve—Gov. [Lever & Thumb Handle (All)]		20297	Plate—Name (9000 R.P.M.)
		[Grip Handle (4500 R.P.M.—Up to Ser. No. 4175, 6000 R.P.M.—Up to Ser. No. 4149, 9000 R.P.M.—Up to Ser. No. 4187)]	70	09900	Rivet—Steel (2)*
	44539	Valve—Gov. [Grip Handle (4500 R.P.M.—Ser. No. 4176 & Up, 9000 R.P.M.—Ser. No. 4188 & Up)]	71	08272	Screw— $\frac{1}{4}$ "-28 (4)*
28	30355	Pin	72	Cat. 2314	Guard—Complete Wheel (4500 & 6000 R.P.M.)
29	13167	Body—Governor Valve		Cat. 2313	Guard—Complete Wheel (9000 R.P.M.)
30	21385	Spring—Valve	73	09520	Nut—Wing $\frac{1}{4}$ " (2)*(Use with Cat. 2314)
31	35010	Retainer—Spring		09443	Nut—Wing #6 (2)*(Use with Cat. 2313)
32	14799	Gasket (Lever & Thumb Handle)	74	24090	Flange—Inside
	14745	Gasket (Grip Handle)	75	Cat. 567	Wheel—Grinding (4500 & 6000 R.P.M.)
33	53694	Housing—Gov. (Lever & Thumb Handle) [Incl's. Fig. 7(4) & 71(4) $\frac{1}{4}$ "-20 Thd.]		Cat. 565	Wheel—Grinding (9000 R.P.M.)
	53696	Housing—Gov. (Grip Handle) [Incl's. Fig. 7(4) & 71(4) $\frac{1}{4}$ "-20 Thd.]	76	24103	Flange
34	14739	Gasket	77	09665	Nut— $\frac{3}{8}$ "
35	44544	Connector—Gov. (Lever & Thumb Handle) (4500 R.P.M.—Ser. No. 4176 & Up, 6000 R.P.M.—Ser. No. 4150 & Up, 9000 R.P.M.—Ser. No. 4188 & Up)	78	25834	Clamp—Guard
	44547	Connector—Gov. (Grip Handle) (4500 R.P.M.—Ser. No. 4176 & Up, 6000 R.P.M.—Ser. No. 4150 & Up, 9000 R.P.M.—Ser. No. 4188 & Up)	79	08775	Screw— $\frac{5}{16}$ " (2)*
36	43370	Assy.—Gov. (4500 R.P.M.) Ser. No. 4176 & Up		09770	Washer—Lock $\frac{5}{16}$ " (2)*
	43371	Assy.—Gov. (6000 R.P.M.) Ser. No. 4150 & Up	81	44158	Plunger—Valve
	43372	Assy.—Gov. (9000 R.P.M.) Ser. No. 4188 & Up	82	33909	Ass'm.—Grip Handle
37	34996	Body—Governor	83	33944	Ass'm.—Trigger
38	43273	Spindle—Governor (4500 R.P.M.—Ser. No. 4176 & Up, 6000 R.P.M.—Ser. No. 4150 & Up, 9000 R.P.M.—Ser. No. 4188 & Up)	84	30347	Pin
39	30452	Pin—Roll (4500 R.P.M.—Ser. No. 4176 & Up, 6000 R.P.M.—Ser. No. 4150 & Up, 9000 R.P.M.—Ser. No. 4188 & Up)	85	30381	Plug—Pipe
40	44037	Spacer—Gov. Weight (4)*(9000 R.P.M.)	86	53086	Set—Grip Handle (Includes Fig. 7(4), 26 thru 35, 38 & 71(4) $\frac{1}{4}$ "-20 Thd.)
41	11514	Weight—Gov. (2)*(4500 & 6000 R.P.M.)	87	33807	Set—Gov. Assy. (6000 R.P.M.) (Incl. Fig. 35 & 36) [Up to Ser. No. 4149]
	11517	Weight—Gov. (2)*(9000 R.P.M.)		33808	Set—Gov. Assy. (4500 R.P.M.) (Incl. Fig. 35 & 36) [Up to Ser. No. 4175]
42	30362	Pin—Roll (2)*		33765	Set—Gov. Assy. (9000 R.P.M.) (Incl. Fig. 35 & 36) [Up to Ser. No. 4187]
43	13164	Nut—Governor Adjusting		33952	Set—Gov. Assy. (Grip Handle—4500 R.P.M.) (Incl. Fig. 27, 35 & 36) [Up to Ser. No. 4175]
				33953	Set—Gov. Assy. (Grip Handle—9000 R.P.M.) (Incl. Fig. 27, 35 & 36 [Up to Ser. No. 4187]
				33954	Set—Gov. Assy. (Grip Handle—6000 R.P.M.) (Incl. Fig. 27, 35 & 36) [Up to Ser. No. 4149]
			88	53188	Set—Gov. Spindle Conversion (Grip Handle) (Incl. Fig. 27, 35 & 38) [4500 R.P.M.—Up to Ser. No. 4175, 6000 R.P.M.—Up to Ser. No. 4149, 9000 R.P.M.—Up to Ser. No. 4187]
			89	53189	Set—Gov. Spindle Conversion (Lever & Thumb Handle) (Incl. Fig. 35 & 38) [4500 R.P.M.—Up to Ser. No. 4175, 6000 R.P.M.—Up to Ser. No. 4149, 9000 R.P.M.—Up to Ser. No. 4187]

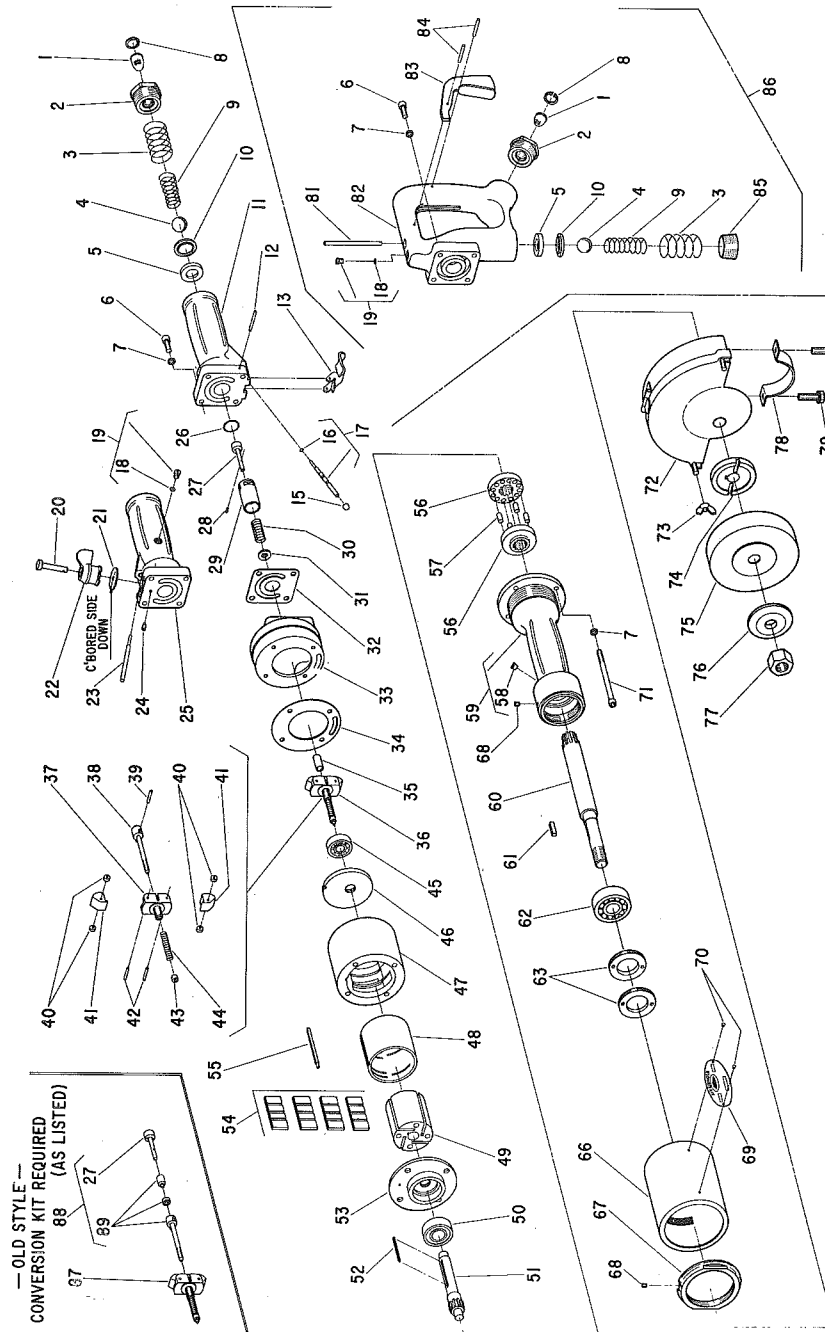
*Order Quantity As Needed

SIoux TOOLS INC.

53412 Kit to convert Grinder to Lever Throttle Handle from Thumb Throttle

Parts List for No. 517 HORIZONTAL AIR GRINDER

(Up To Serials Starting With "B")



Furnish Catalog, Serial and Model Number When Ordering Parts

This pdf incorporates the following model numbers:

517