



NOTE: Parts are no longer available for this tool.

The manual will continue on the next page.

SIoux**TOOLS**

PARTS LIST FOR 504, 504T, A504, A504T, B504, B504T, C504, C504T, D504, D504T, 505, 505T, A505, A505T, B505, B505T, C505, C505T, D505, D505T, 507, 507T, A507, A507T, C507, C507T, D507, and D507T

VERTICAL AIR GRINDERS, SANDERS AND WIRE BRUSHES

(SERIAL 2769 UP TO B99)

Furnish Catalog, Serial and Model Number When Ordering Parts

Fig- ure	Part No.	Name	Fig- ure	Part No.	Name
4	43273	Spindle—Governor	34	34994	Valve—Governor
5	44037	Spacer—Governor Weight (7000 R.P.M.) (4)	*35	14345	Ring—"O"
6	11514	Weight—Governor (4500 R.P.M.—up to Ser. 4231) (6000 R.P.M.) (2)	37	33735	Handle—Throttle
	44088	Weight—Governor (4500 R.P.M.—Ser. 4232 & up) (2)	38	21396	Spring
	11517	Weight—Governor (7) (7000 R.P.M.)	39	33843	Ass'm.—Bushing & Retainer
7	30362	Pin—Roll (2)	40	33736	Screen
8	34996	Body—Governor	41	21512	Retainer—Ring
9	21390	Spring—Governor (6000 R.P.M.)	42	21418	Spring—Tapered
	21389	Spring—Governor (4500 & 7000 R.P.M.)	43	10294	Ball—Steel
10	13164	Nut—Governor Adjusting	44	44011	Retainer—Seat
11	12752	Housing—Governor	*45	14344	Seat—Throttle Valve
12	43290	Ass'm.—Governor (6000 R.P.M.)	49	35009	Lever—Throttle
	43289	Ass'm.—Governor (4500 R.P.M.)	50	33775	Plate—Throttle Lever
	43291	Ass'm.—Governor (7000 R.P.M.)	51	44042	Pin
13	10175	Bearing—Ball	52	13178	Sleeve
14	33734	Plate—Top End	*53	14349	Ring—"O"
15	12750	Housing	54	33848	Ass'm.—Plunger & "O" Ring
16	12257	Handle	55	13167	Body—Valve
17	09750	Washer—Lock (5)	56	21385	Spring—Valve
18	08232	Screw (9)	*57	14039	Button—Lever Throttle
19	34991	Key—Cylinder	†58	33852	Plate—Bottom End (Not available)
20	34984	Cylinder	59	34992	Key Rotor
*21	33837	Vane—Rotor (Set of 4)	†60	34987	Spindle (Not available)
22	34985	Rotor	22626	Spindle—Spline	
23	09501	Nut (8)	61	10195	Bearing—Ball
24	34988	Cap	62	44083	Flange—Locking
25	34986	Flange—Drive	66	07186	Screw
26	08272	Screw (4)	68	44141	Pivot
27	30400	Pin	69	33995	Ass'm.—Lever & Cam
*28	14737	Gasket	70	35078	Plate—Wear
29	44451	Lever—Governor	71	44251	Plunger—Valve
30	34990	Lever—Valve	72	33994	Handle—Thumb Throttle
31	14799	Gasket—Handle	*73	14369	Ring—"O"
32	30355	Pin	74	43553	Ass'm.—Oiler Screw & "O" Ring
33	35010	Retainer—Spring	75	09750	Washer—Lock (8)
			76	30424	Pin
			77	34976	Button—Wear
				20309	Plate—Name (D-505, D-505T)
				20289	Plate—Name (D-504, D-504T)
				20310	Plate—Name (D-507, D-507T)
				06000	Screw (4)

53412 Kit to Convert Units to Lever Throttle Handle

†Order Kit No. 53348 (Replaces Fig's. 58 & 60)

*These parts included in Tune-Up Set No. 43907

SIoux TOOLS INC.

SIoux CITY, IOWA, U.S.A. 51102

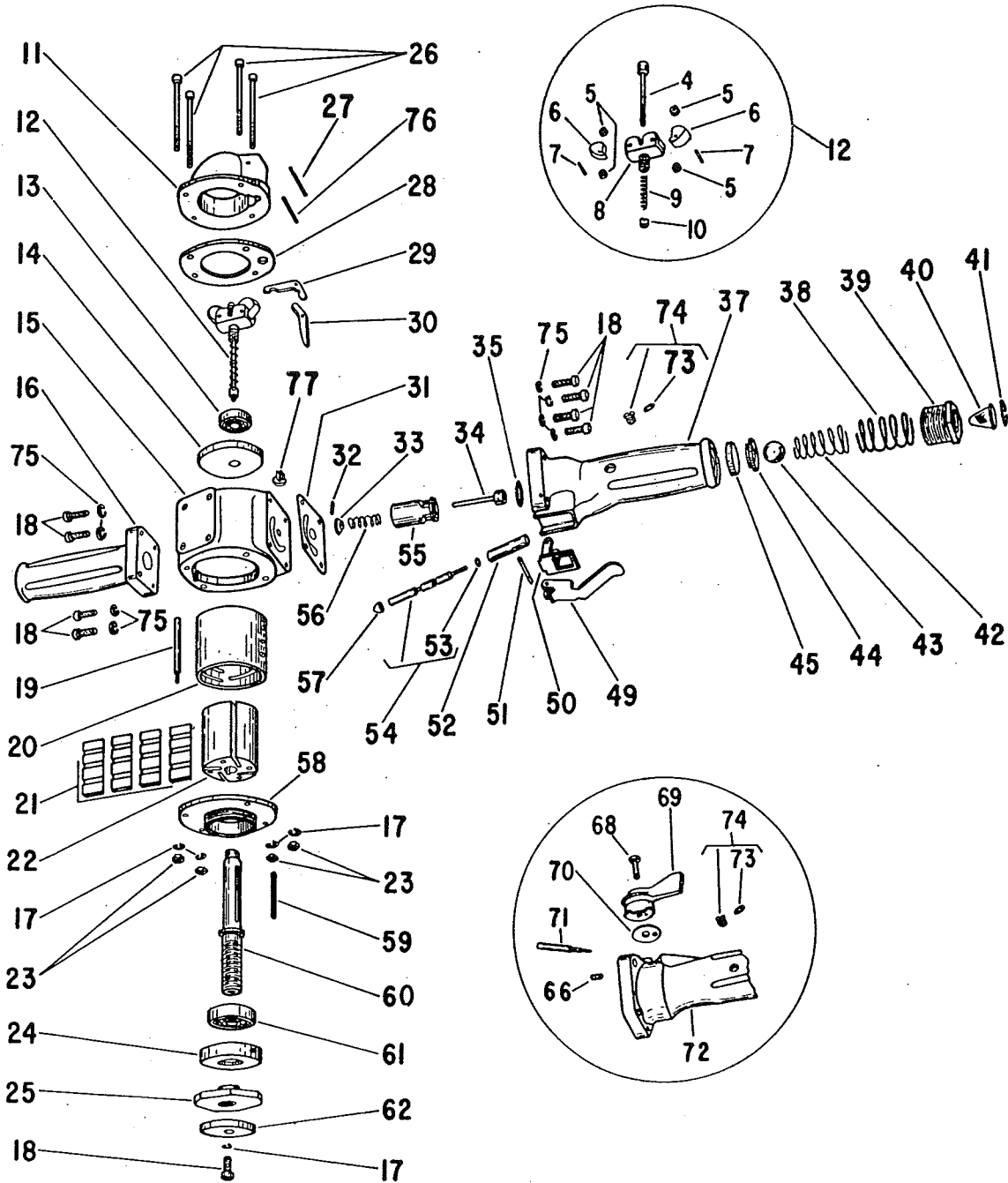
SIoux



TOOLS

PARTS LIST FOR 504, 504T, A504, A504T, B504, B504T, C504, C504T, D504, D504T, 505, 505T, A505, A505T, B505, B505T, C505, C505T, D505, D505T, 507, 507T, A507, A507T, C507, C507T, D507, and D507T

VERTICAL AIR GRINDERS, SANDERS AND WIRE BRUSHES
(SERIAL 2769 UP TO B99)



Furnish Catalog, Serial and Model Number When Ordering Parts

This pdf incorporates the following model numbers:

504, 504T, A504, A504T, C504, C504T, D504, D504T, 505T, A505, A505T, B505, B505T, C505, C505T, D505, D505T, 507, 507T, A507, A507T, B507, B507T, C507, C507T, D507, D507T