



NOTE: Parts are no longer available for this tool.

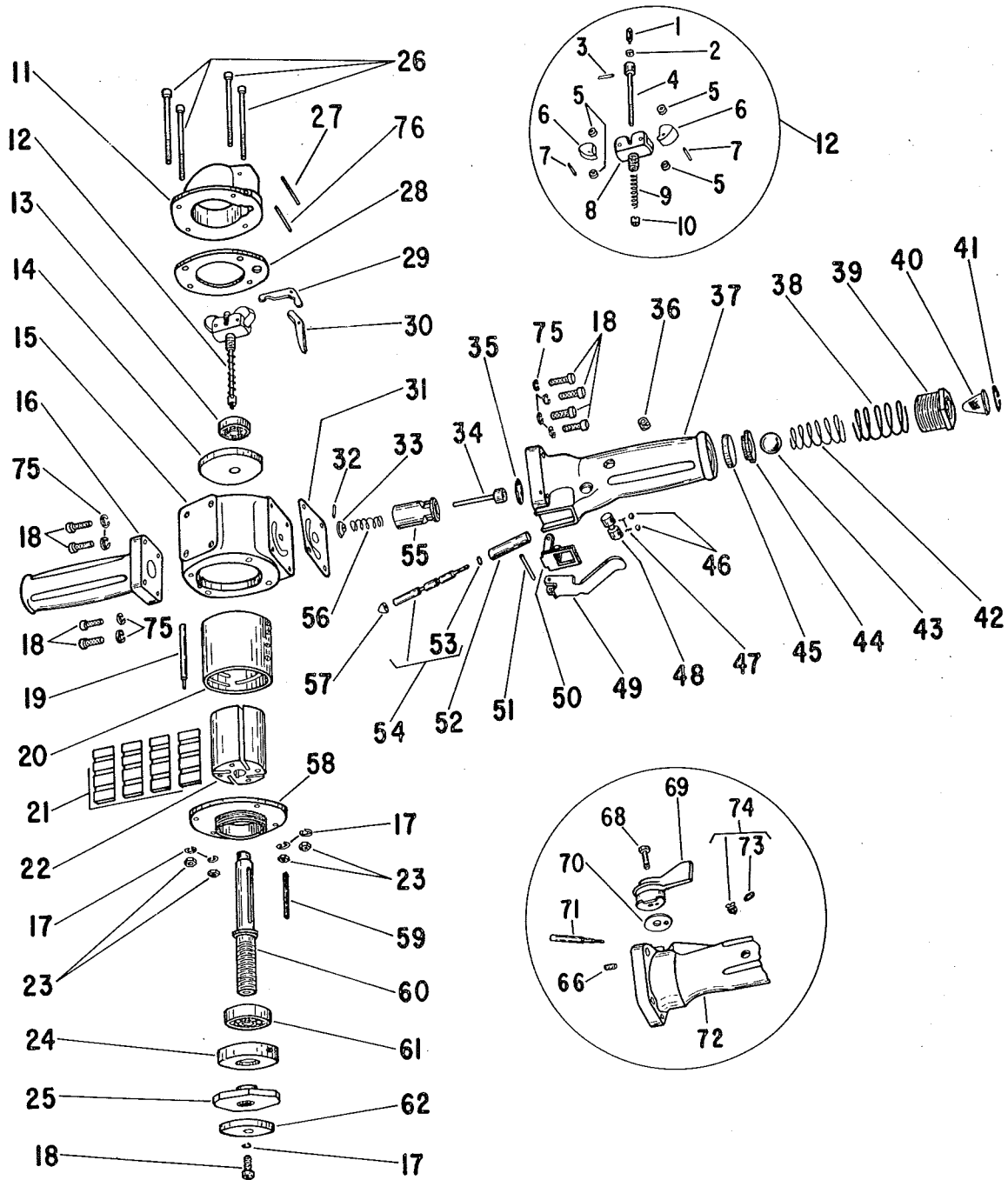
The manual will continue on the next page.

SIoux



TOOLS

Parts List for No.'s D-504, D-505, D-507 VERTICAL AIR GRINDER & SANDER (UP TO SERIAL 2768)



Furnish Catalog, Serial and Model Number When Ordering Parts

SIoux**TOOLS**

Parts List for No.'s D-504, D-505, D-507

VERTICAL AIR GRINDER & SANDER

(UP TO SERIAL 2768)

Furnish Catalog, Serial and Model Number When Ordering Parts

Fig- ure	Part No.	Name	Fig- ure	Part No.	Name
1	44006	Swivel—Governor	36	30246	Plug—Pipe
2	10233	Bearing—Ball		43553	Ass'm.—Oiler Screw & "O" Ring
3	30349	Pin—Roll	37	33735	Handle—Throttle
4	43365	Kit—Governor Spindle	38	21396	Spring
5	44037	Spacer—Governor Weight (7000 R.P.M.) (4)	39	33843	Ass'm.—Bushing & Retainer
6	11514	Weight—Governor (4500 & 6000 R.P.M.) (2)	40	33736	Screen
	11517	Weight—Governor (7) (7000 R.P.M.)	41	21512	Retainer—Ring
7	30362	Pin—Roll (2)	42	21418	Spring—Tapered
8	34996	Body—Governor	43	10294	Ball—Steel
9	21390	Spring—Governor (6000 R.P.M.)	44	44011	Retainer—Seat
	21389	Spring—Governor (4500 & 7000 R.P.M.)	*45	14344	Seat—Throttle Valve
10	13164	Nut—Governor Adjusting	46	10303	Ball—Steel (2) (Up to Serial 2712)
11	12752	Housing—Governor	47	21392	Spring—Lock (2) (Up to Serial 2712)
12	33763	Ass'm.—Governor (6000 R.P.M.)	48	44008	Plunger—Lock (Up to Serial 2712)
	33715	Ass'm.—Governor (4500 R.P.M.)	49	35009	Lever—Throttle
	33764	Ass'm.—Governor (7000 R.P.M.)	50	33775	Plate—Throttle Lever
13	10175	Bearing—Ball	51	44042	Pin
14	33734	Plate—Top End	52	13165	Sleeve (Up to Serial 2712)
15	12750	Housing		13178	Sleeve (Serial 2713 & up)
	34976	Button—Wear	*53	14349	Ring—"O"
16	12257	Handle	54	33848	Ass'm.—Plunger & "O" Ring
17	09750	Washer—Lock 1/4" (5)	55	13167	Body—Valve
18	08232	Screw 1/4" (9)	56	21385	Spring—Valve
19	34991	Key—Cylinder	*57	14039	Button—Lever Throttle
20	34984	Cylinder	58	33852	Plate—Bottom End
*21	33837	Vane—Rotor (Set of 4)	59	34992	Key—Rotor
22	34985	Rotor	60	34987	Spindle
23	09501	Nut 1/4" (8)	61	10195	Bearing—Ball
24	34988	Cap	62	44083	Flange—Locking
25	34986	Flange—Drive	66	07186	Screw #10
26	08272	Screw 1/4" (4)	68	44141	Pivot
27	30400	Pin	69	33995	Ass'm.—Lever & Cam
*28	14737	Gasket	70	35078	Plate—Wear
29	34989	Lever—Governor	71	44251	Plunger—Valve
30	34990	Lever—Valve	72	33994	Handle—Thumb Throttle
*31	14738	Gasket—Handle	*73	14369	Ring—"O"
32	30355	Pin	74	43553	Ass'm.—Oiler Screw & "O" Ring
33	35010	Retainer—Spring	75	09750	Washer—Lock 1/4" (8)
34	34994	Valve—Governor	76	30424	Pin
*35	14345	Ring—"O"		20309	Plate—Name (6000 R.P.M.)
				20289	Plate—Name (4500 R.P.M.)
				20310	Plate—Name (7000 R.P.M.)
				06000	Screw #2 (4)

*These parts included in Tune-Up Set No. 43907

SIoux TOOLS INC.

SIoux CITY, IOWA, U.S.A. 51102

This pdf incorporates the following model numbers:

D-504, D-505, D-507