



**NOTE: Parts are no longer available for this tool.**

**The manual will continue on the next page.**

# SIoux



# TOOLS

## Parts List for No. 482 AIR IMPACT WRENCH (UP TO SERIAL 9999)

Furnish Catalog, Serial and Model Number When Ordering Parts

Fig- ure	Part No.	Name	Fig- ure	Part No.	Name
1	08231	Screw 1/4" (4)	33	33796	Plate—Rear End
	09750	Washer—Lock 1/4" (4)	34	34686	Cylinder
2	12257	Handle—Auxiliary	35	33834	Ass'm.—Reversing Valve
3	09530	Nut—Elastic Stop (10)	36	44048	Plunger—Throttle
4	35025	Bail—Front	37	14041	Seat—Throttle Valve
5	10322	Ball (2)	38	13170	Sleeve—Throttle
6	30363	Pin—Guide (2)	39	44050	Adaptor
7	44015	Spindle	40	21395	Spring—Air Screen
9	*11525	Cam—Anvil	41	33736	Screen—Air
10	10238	Bearing—Ball	42	21394	Spring—Throttle Valve
11	44013	Plate—Thrust	43	10292	Ball
12	44054	Stud (4)	44	30359	Plug—Pipe
13	44017	Frame—Hammer	45	33176	Lever
14	10237	Bearing—Ball	46	30251	Pin—Groove (2)
15	33350	Housing	47	33146	Trigger
16	10236	Bearing—Ball	48	10293	Ball
17	33795	Plate—Front End	49	*44102	Hammer—Auxiliary
18	44076	Pin—Guide	50	44053	Washer—Thrust
19	44043	Rotor	51	21388	Spring
20	33838	Vane—Rotor (Set of 7)	52	10306	Ball
21	10167	Bearing—Ball	53	33835	Ass'm.—Anvil
22	21490	Ring—Retainer	54	14317	Ring—"O"
23	14741	Gasket	55	30229	Pin—Roll
24	12256	Cap—Back	56	44073	Bushing
25	44051	Socket—Bail (2)	57	33800	Case—Hammer
26	08023	Screw 1/4"	58	14347	Protector—Rubber
27	44052	Bail—Back	59	33836	Ass'm.—Hammer Case with Protector
28	20308	Plate—Name	60	35039	Washer
29	21482	Ring—Retainer		20914	Plate—Instruction
30	35030	Washer—Flat			
31	14309	Ring—"O" (2)			
32	33823	Ass'm.—Volume Control			

\*When ordering for under serial 2510, order No. 33886 Ass'm.

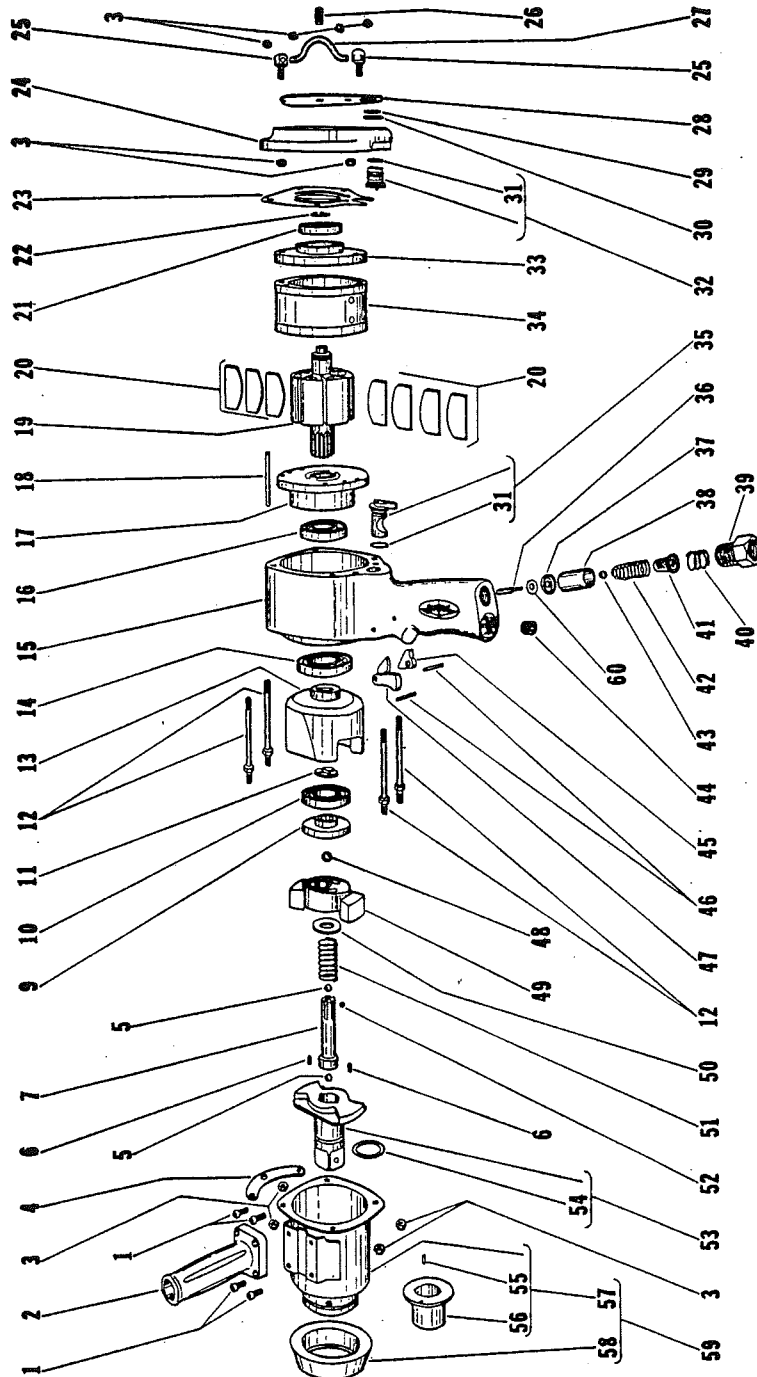
**SIoux TOOLS INC.**  
SIoux CITY, IOWA, U.S.A. 51102

# SIoux



# TOOLS

## Parts List for No. 482 AIR IMPACT WRENCH (UP TO SERIAL 9999)



Furnish Catalog, Serial and Model Number When Ordering Parts

This pdf incorporates the following model numbers:

482