

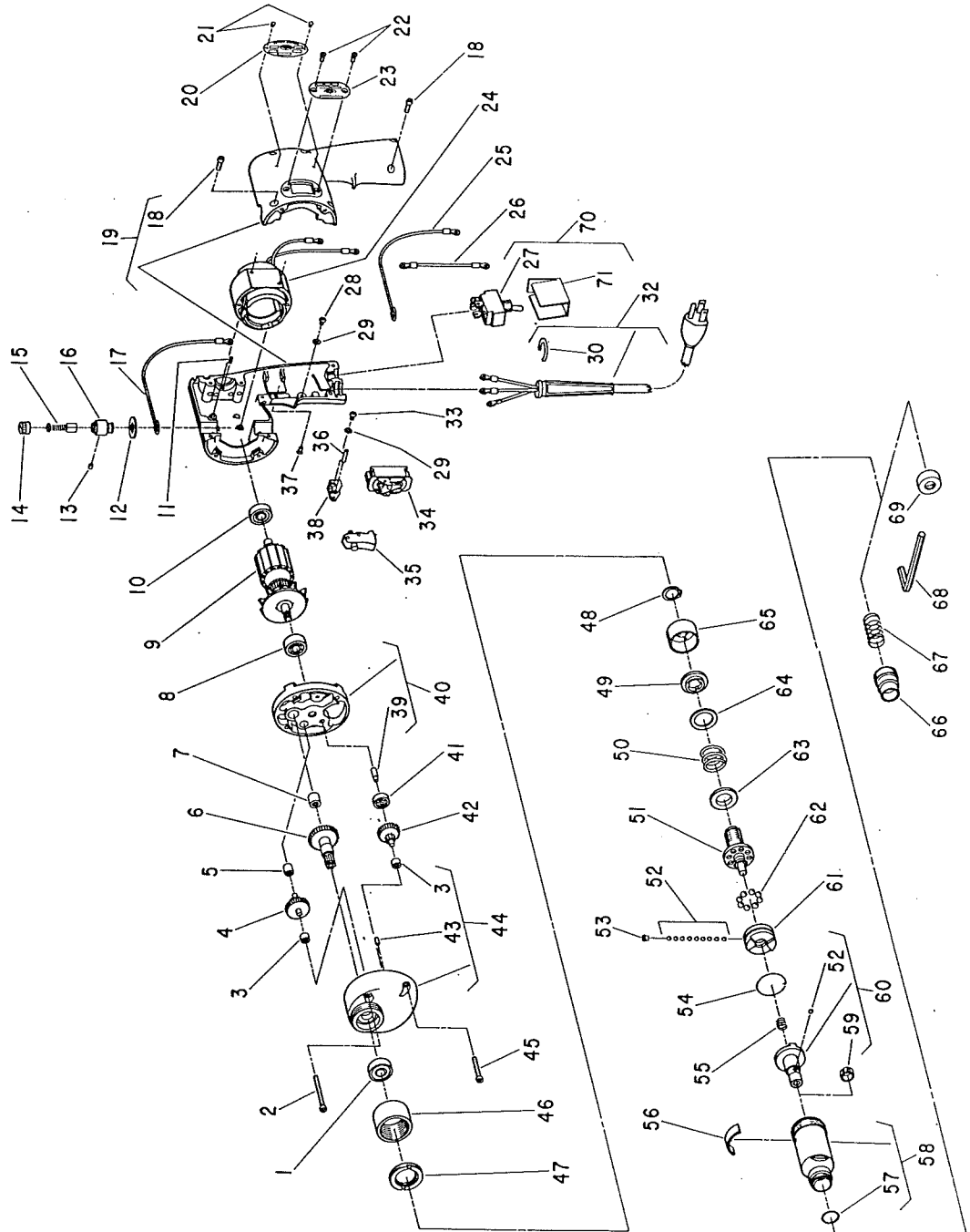


NOTE: Parts are no longer available for this tool.

The manual will continue on the next page.

Parts List For No. 262 Sioux
ELECTRIC SCREW DRIVER

SER. NO. B-100 & UP



Furnish Catalog and Serial Number When Ordering Parts

SIoux**TOOLS**

Parts List for No. 262 Sioux
ELECTRIC SCREW DRIVER

SER. NO. B-100 & UP

Furnish Catalog, Serial and Model Number When Ordering Parts

Fig- ure	Part No.	Name	Fig- ure	Part No.	Name
1	10221	Bearing—Ball	34	18191	Switch
2	06516	Screw—#8 (2)	35	33421	Ass'm.—Trigger & Lock
3	10027	Bearing—Needle (625 & 950 R.P.M.-2) 1600 R.P.M.-1)	36	34694	Pin—Trigger Swivel
4	33410	Gear—2nd Compound Cluster (625 & 1600 R.P.M.)	37	06074	Screw—#4
	33412	Gear—2nd Compound Cluster (950 R.P.M.)	38	25944	Bracket—Trigger Lock
	33413	Gear—2nd Compound Cluster (2500 R.P.M.)	39	34693	Pin—Support
5	10026	Bearing—Needle	40	33417	Cover—Gear Case (Includes Figures 5 & 7)
6	22675	Gear—Tool Spindle	41	10222	Bearing—Ball
	22676	Gear—Tool Spindle	42	19137	Gear—1st Compound Cluster (625 R.P.M.)
7	10013	Bearing—Needle		19139	Gear—1st Compound Cluster (950 R.P.M.)
8	10223	Bearing—Ball	43	34819	Pin
9	28545	Armature with Fan (625 & 950 R.P.M.)	44	33415	Case—Gear (625 & 950 R.P.M.)
	28546	Armature with Fan (1600 & 2500 R.P.M.)		33416	Case—Gear (1600 & 2500 R.P.M.)
	16812	Armature with Fan & Bearings (625 & 950 R.P.M.)	45	06592	Screw—#8 (2)
	16813	Armature with Fan & Bearings 1600 & 2500 R.P.M.)	46	34909	Sleeve—Threaded
10	10220	Bearing—Ball	47	34908	Lock—Bearing
11	21223	Spring—Friction	48	21774	Ring—Retaining
12	14849	Washer—Insulation (2)	49	54073	Washer—Index
13	14824	Pin—Brush Holder (2)	50	41249	Spring—Compression (For torque setting above 25 inch pounds)
14	18109	Cap—Brush Holder (2)		41284	Spring—Compression (Green) (For torque setting below 25 inch pounds)
15	18009B	Brush (2) Pair	51	22669	Spindle—Clutch
16	18062	Holder—Brush (2)	52	10902	Ball—Steel (10)
17	18840	Wire—Lead (9½" Long)	53	54074	Retainer—Ball
18	06573	Screw—#8 (6)	54	21762	Ring—Retaining
19	33475	Housing	55	41250	Spring
20	20277	Plate—Name	56	53099	Wrench—Adjusting
21	09950	Screw—Drive (2)	57	14281	Ring—"O"
22	06088	Screw—#4 (2)	58	53084	Ass'm.—Clutch Case
23	20273	Plate—Inspection Cover	59	25854	Clip—Retainer
24	28567	Field	60	53076	Ass'm.—Bit Holder
25	18839	Wire—Lead (7½" Long)	61	54071	Jaw—Clutch
26	18841	Wire—Lead (3½" Long)	62	10291	Ball—Steel (8)
27	18186	Switch—Reversing	63	54072	Guide—Spring
28	06224	Screw—#6	64	35273	Washer
29	09835	Washer—Lock #6 (2)	65	53095	Nut—Adjusting
30	21455	Ring—Clinch	66	44520	Retainer—Finder
32	18644	Cord—Electric, with Terminals	67	41251	Spring—Finder
33	06362	Screw—#6	68	30208	Wrench—Allen
			69	54076	Protector—Thread
			70	63109	Ass'm.—Switch
			71	05053	Insulation—Switch

SIoux TOOLS INC.
SIoux CITY, IOWA, U.S.A. 51102

This pdf incorporates the following model numbers:

262