



NOTE: Parts are no longer available for this tool.

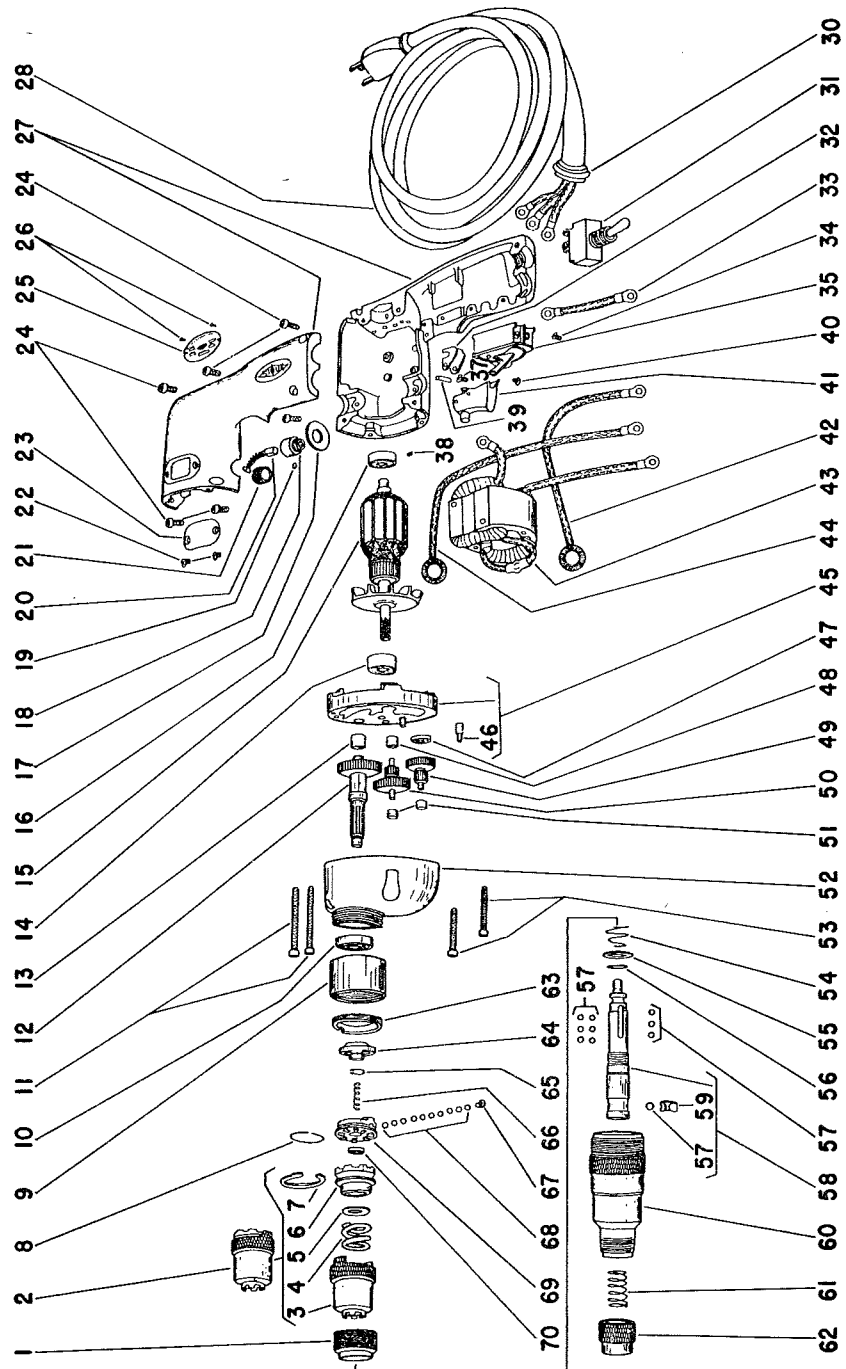
The manual will continue on the next page.

SIoux



TOOLS

Parts List For No. 262 Sioux
ELECTRIC SCREW DRIVER
(Up To Serial B99)



Furnish Catalog, Serial and Model Number When Ordering Parts

SIoux**TOOLS**

**Parts List For No. 262 Sioux
ELECTRIC SCREW DRIVER
(Up To Serial 899)**

Furnish Catalog, Serial and Model Number When Ordering Parts

Fig. ure	Part No.	Name	Fig. ure	Part No.	Name
1	34907	Sleeve—Locking	34	06224	Screw—#6
2	43005	Ass'm.—Lower Clutch (625 R.P.M.)	09835	Washer—Lock #6	
	33579	Ass'm.—Lower Clutch (950 & 1600 R.P.M.)	35	18191	Switch
3	34906	Sleeve—Adjusting	14328	Button	
4	21415	Spring—Compression (625 R.P.M.)	37	06362	Screw—#6
	21381	Spring—Compression (950 & 1600 R.P.M.)	09835	Washer—Lock #6	
5	25975	Washer	38	21223	Spring—Friction
6	34888	Clutch—Lower	39	34694	Pin—Trigger Swivel
7	21549	Ring—Retainer	40	06074	Screw—#4
8	21503	Ring—Retainer (Up to Serial 2707)	41	33421	Ass'm.—Triger & Lock
	21515	Ring—Retainer (Serial 2708 & up)	42	18840	Wire—Lead
9	34909	Sleeve—Threaded	43	17521	Field
10	10221	Bearing—Ball	44	18839	Wire—Lead
11	06516	Screw—#8 (2)	45	33417	Cover—Gear Case (Includes Figures 13 & 48)
12	22603	Gear—Tool Spindle and	46	34693	Pin—Support
13	10013	Bearing—Needle	47	10222	Bearing—Ball
14	10223	Bearing—Ball	48	10026	Bearing—Needle
15	16086	Armature with Fan (625 & 950 R.P.M.)	49	19137	Gear—1st Compound Cluster (625 R.P.M.)
	16085	Armature with Fan (1600 R.P.M.)	19139	Gear—1st Compound Cluster (950 R.P.M.)	
	16812	Armature with Fan & Bearings (625 & 950 R.P.M.)	50	33410	Gear—2nd Compound Cluster (625 & 1600 R.P.M.)
	16813	Armature with Fan & Bearings (1600 R.P.M.)	33412	Gear—2nd Compound Cluster (950 R.P.M.)	
16	10220	Bearing—Ball	51	10027	Bearing—Needle (625 & 950 R.P.M. 2) (1600 R.P.M. 1)
17	14849	Washer—Insulation (2)	52	33415	Case—Gear (625 & 950 R.P.M.)
18	18062	Holder—Brush (2)	33416	Case—Gear (1600 R.P.M.)	
19	14824	Pin—Brush Holder (2)	53	06592	Screw—#8 (2)
20	18009B	Brush (2) Pair	54	21380	Spring
21	18109	Cap—Brush Holder (2)	55	25976	Washer
22	06088	Screw—#4 (2)	56	21501	Ring—Retainer
23	20273	Plate—Inspection Cover	57	10902	Ball—Retainer (10)
24	06573	Screw—#8 (6)	58	33564	Ass'm.—Drive Socket
25	20277	Plate—Name	59	25854	Ring—Ball Retainer
26	09950	Screw—Drive (2)	60	33565	Case—Clutch
27	33475	Housing	61	21377	Spring—Finder
28	18644	Cord—Electric, with Terminals	62	34861	Retainer—Finder
30	21455	Ring—Clinch	63	34908	Lock—Bearing
31	18186	Switch—Reversing	64	34902	Clutch—Upper
32	25944	Bracket—Trigger Lock	65	21500	Ring—Retainer
33	18841	Wire—Lead	66	21379	Spring
			67	34889	Retainer—Ball
			68	10303	Ball (10)
			69	34903	Clutch—Middle
			70	34905	Sleeve—Ball Retainer

**SIoux TOOLS INC.
SIoux CITY, IOWA, U.S.A. 51102**

This pdf incorporates the following model numbers:

262