



NOTE: Parts are no longer available for this tool.

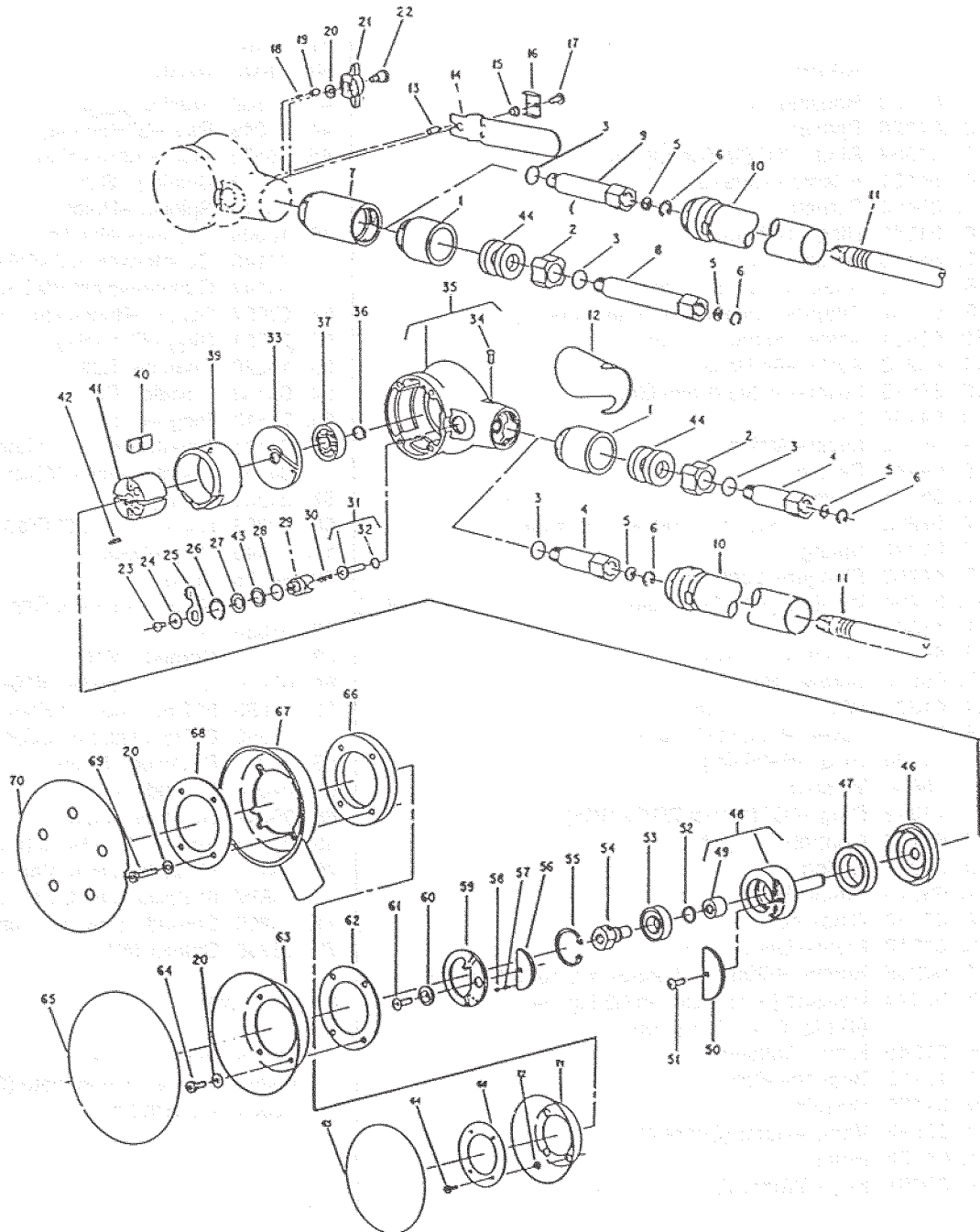
The manual will continue on the next page.



PARTS LIST FOR AIR RANDOM ORBITAL SANDER

Form No. A1069C
Date 10-91

603, 626, 658, 660, 690, & 697 INCLUDES B, H, V, & X SUFFIXS (SERIAL "C")



FURNISH CATALOG & SERIAL NO. WHEN ORDERING PARTS

SIoux TOOLS INC.

2901 FLOYD BOULEVARD ■ SIOUX CITY, IOWA 51102-0507 ■



PARTS LIST FOR AIR RANDOM ORBITAL SANDER 603, 626, 658, 660, 690, & 697

INCLUDES B, H, V, & X SUFFIXS
(SERIAL "C")

FIG. PART

NO.	NO.	NAME
1.	64129	Housing—Muffler
2.	04328	Spacer
3.	14309	Ring—"O" (1/16 x 1/2 x 5/8)
4.	64131	Adaptor—Intake
5.	30463	Screen
6.	21541	Ring—Retainer
7.	64130	Handle
8.	64124	Adaptor—Intake (Long)
9.	64137	Adaptor—Intake (Remote Exhaust)
10.	63561	Ass'y—Exhaust Tube
11.	43223	Ass'y—Air Hose
12.	35633	Lever—Valve (Palm Grip)
13.	54130	Pin
14.	35842	Lever—Valve
15.	64143	Sleeve
16.	35851	Cover
17.	07225	Screw—Phil. Pan Hd. #10-32 x 3/8
18.	21392	Spring
19.	44753	Plunger—Location
20.	35234	Washer (4)* [(5)* When Used With Thumb Throttle]
21.	11603	Throttle—Thumb
22.	44763	Screw—Shoulder
23.	06672	Screw—Phil. Rd. Hd. #8-32 x 1/4"
24.	41336	Washer—Belleville
25.	35634	Lever—Output Control
26.	21826	Ring—Retaining
27.	25680	Washer
28.	14312	Ring—"O" (1/16 x 7/16 x 9/16)
29.	64132	Control—Output
30.	21211	Spring
31.	63575	Stem—Valve
32.	65289	Ring—"O"
33.	64212	Plate—Upper End
34.	06205	Screw—Fillister Hd. #6-32 x 5/16 (2)* Taptite
35.	63574	Housing [Also Includes (2) Fig. 34, (4) Fig. 64 & (4) Fig. 69]
36.	21545	Ring—Retaining
37.	10113	Bearing—Ball
39.	64125	Cylinder
40.	33597	Vane—Rotor (Set of 4)
41.	64122	Rotor
42.	30001	Key—Woodruff

FIG. PART

NO.	NO.	NAME
43.	41338	Washer—Wave
44.	05049	Pad—Silencer (2)*
46.	65572	Plate—Lower End
47.	65573	Bearing—Ball
48.	63576	Spindle—Rotor
49.	10005	Bearing—Needle
50.	64140	Counterweight (WO/Lockout)(5" Pad)
	64147	Counterweight (WO/Lockout)(6" Pad)
51.	07097	Screw—Button Hd. Soc. #10-24 x 1/2
52.	21751	Ring—Retaining
53.	10228	Bearing—Ball
54.	64133	Spindle—Pad
55.	21513	Ring—Retaining
56.	64141	Counterweight (W/Lockout)(5" Pad)
	64148	Counterweight (W/Lockout)(6" Pad)
57.	21223	Spring
58.	10303	Ball—Steel (1/8" Dia.)
59.	35845	Ring—Lock
60.	64136	Knob
61.	07263	Screw—Flat Hd. Cap #10-24 x 5/8
62.	05038	Gasket
63.	35844	Shroud—Metal
64.	07250	Screw—Pan Hd. #10-32 x 1/2 (Taptite)(4)*
65.	695	5" PSA Tapered Edge Pad
	696	6" PSA Tapered Edge Pad
66.	35846	Retainer—Motor
67.	04056	Shroud—Vacuum
68.	35847	Retainer—Motor
69.	07251	Screw—Pan Hd. #10-32 x 1 (Taptite)(4)*
70.	585V	5" Backing Pad, Vacuum Type
	583V	6" Backing Pad, Vacuum Type
71.	65285	Shroud—Flexible (Rubber)
72.	65286	Spacer (4)*

NOT SHOWN

20440R	Plate—Name
09954	Screw—Name Plate (2)*
30605	Wrench 5/8

*ORDER QUANTITY AS NEEDED

FURNISH CATALOG & SERIAL NO. WHEN ORDERING PARTS

SIoux
TOOLS INC.

2901 FLOYD BOULEVARD ■ SIOUX CITY, IOWA 51102-0507 ■

This pdf incorporates the following model numbers:

603, 626, 658, 660, 690, 697