



NOTE: Parts are no longer available for this tool.

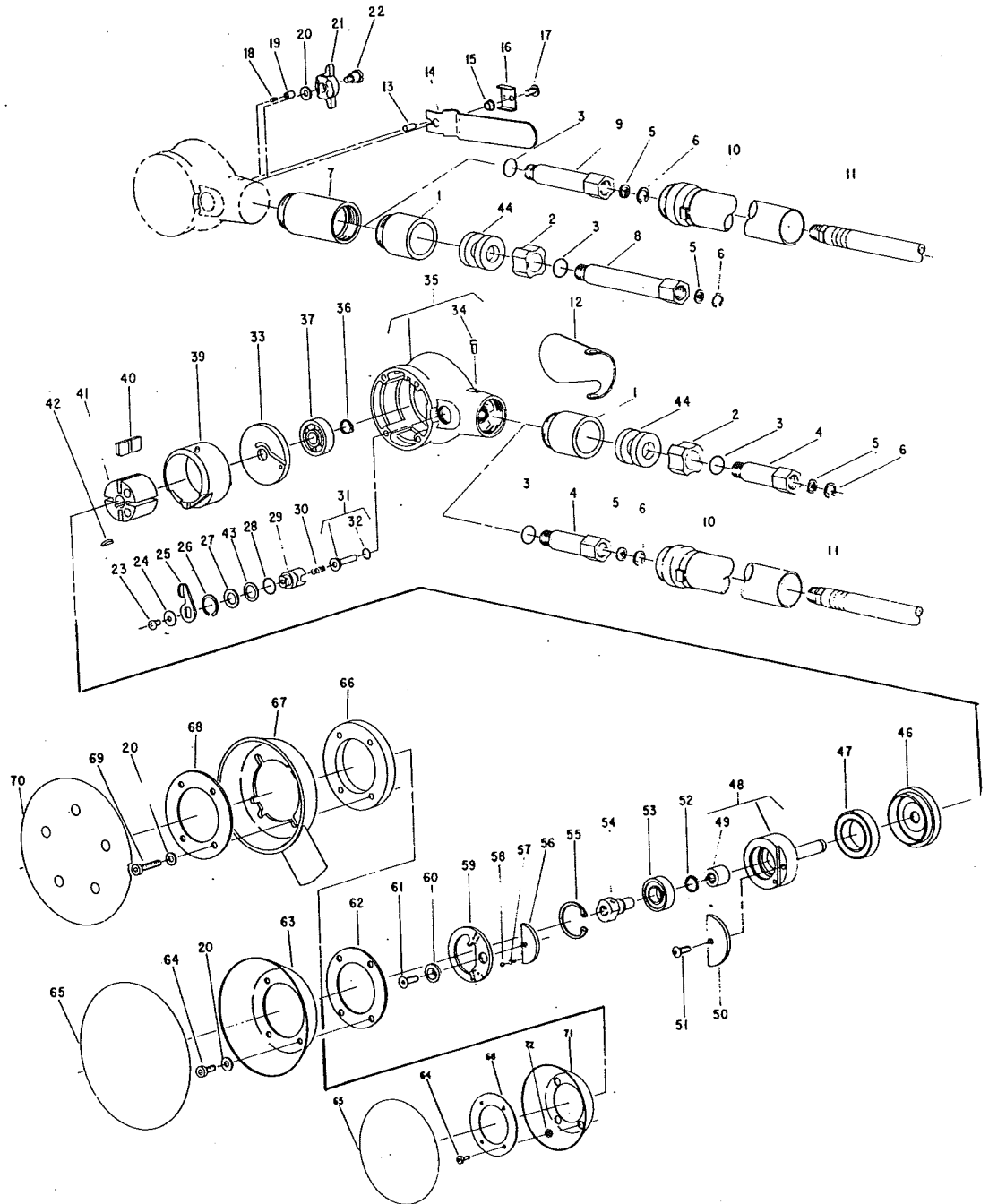
The manual will continue on the next page.



AIR RANDOM ORBITAL SANDER 603, 626, 658, 660, 690 & 697

Includes B, H, V & X Suffixs
(SERIAL "B")

FURNISH CATALOG & SERIAL NO. WHEN ORDERING PARTS



SIoux TOOLS INC.

2901 FLOYD BOULEVARD ■ SIOUX CITY, IOWA 51102 ■



AIR RANDOM ORBITAL SANDER 603, 626, 658, 660, 690 & 697

Includes B, H, V & X Suffixs
(SERIAL "B")

FURNISH CATALOG & SERIAL NO. WHEN ORDERING PARTS

Fig. ure	Part No.	Name
1	64129	Housing - Muffler
2	04328	Spacer
3	14309	Ring - "O" (1/16 x 1/2 x 5/8)
4	64131	Adaptor - Intake
5	30463	Screen
6	21541	Ring - Retainer
7	64130	Handle
8	64124	Adaptor - Intake (Long)
9	64137	Adaptor - Intake (Remote Exhaust)
10	63561	Ass'y. - Exhaust Tube
11	43223	Ass'y. - Air Hose
12	35633	Lever - Valve (Palm Grip)
13	54130	Pin
14	35842	Lever - Valve
15	64143	Sleeve
16	35851	Cover
17	07225	Screw - Phil. Pan Hd. #10-32 x 3/8
18	21392	Spring
19	44753	Plunger - Location
20	35234	Washer (4)* [(5)* When Used With Thumb Throttle]
21	11603	Throttle - Thumb
22	44763	Screw - Shoulder
23	06672	Screw - Phil. Rd. Hd. #8-32 x 1/4"
24	41336	Washer - Belleville
25	35634	Lever - Output Control
26	21826	Ring - Retaining
27	25680	Washer
28	14312	Ring - "O" (1/16 x 7/16 x 9/16)
29	64132	Control - Output
30	21211	Spring
31	63575	Stem - Valve
32	65289	Ring - "O"
33	64212	Plate - Upper End
34	06205	Screw - Fillister Hd. #6-32 x 5/16 (2)* Taptite
35	63574	Housing [Also Includes (2) Fig. 34, (4) Fig. 64 & (4) Fig. 69]
36	21545	Ring - Retaining
37	10113	Bearing - Ball
39	64125	Cylinder
40	33597	Vane - Rotor (Set of 4)
41	64122	Rotor

Fig- ure	Part No.	Name
42	30001	Key - Woodruff
43	41338	Washer - Wave
44	05049	Pad - Silencer (2)*
46	64127	Plate - Lower End
47	10287	Bearing - Ball
48	63576	Spindle - Rotor
49	10005	Bearing - Needle
50	64140	Counterweight (WO/Lockout) (5" Pad)
	64147	Counterweight (WO/Lockout) (6" Pad)
51	07097	Screw - Button Hd. Soc. #10-24 x 1/2
52	21751	Ring - Retaining
53	10228	Bearing - Ball
54	64133	Spindle - Pad
55	21513	Ring - Retaining
56	64141	Counterweight (W/Lockout) (5" Pad)
	64148	Counterweight (W/Lockout) (6" Pad)
57	21223	Spring
58	10303	Ball - Steel (1/8" Dia.)
59	35845	Ring - Lock
60	64136	Knob
61	07263	Screw - Flat Hd. Cap #10-24 x 5/8
62	05038	Gasket
63	35844	Shroud—Metal
64	07250	Scr. - Pan Hd. #10-32 x 1/2 (Taptite) (4)*
65	695	5" PSA Tapered Edge Pad
	696	6" PSA Tapered Edge Pad
66	35846	Retainer - Motor
67	04056	Shroud - Vacuum
68	35847	Retainer - Motor
69	07251	Screw - Pan Hd. #10-32 x 1 (Taptite) (4)*
70	585V	5" Backing Pad, Vacuum Type
	583V	6" Backing Pad, Vacuum Type
71	65285	Shroud—Flexible (Rubber)
72	65286	Spacer (4)*
NOT SHOWN		
	20440R	Plate - Name
	09954	Screw - Name Plate (2)*
	30605	Wrench 5/8

*Order Quantity As Needed

SIoux TOOLS INC.

2901 FLOYD BOULEVARD ■ SIOUX CITY, IOWA 51102 ■

This pdf incorporates the following model numbers:

603, 626, 658, 660, 690, 697