



NOTE: Parts are no longer available for this tool.

The manual will continue on the next page.



AIR RANDOM ORBITAL SANDER 603, 626, 658, 660, 690 & 697

Includes B, H, V & X Suffixes
(SERIAL "A")

FURNISH CATALOG, SERIAL AND MODEL NO. WHEN ORDERING PARTS

Fig- ure	Part No.	Name	Fig- ure	Part No.	Name	
1	64129	Housing - Muffler	41	64122	Rotor	
2	04328	Spacer	42	30001	Key - Woodruff	
3	14309	Ring - "O" (1/16 x 1/2 x 5/8)	43	41338	Washer - Wave	
4	64131	Adaptor - Intake	44	05049	Pad - Silencer (2)*	
5	30463	Screen	46	64127	Plate - Lower End	
6	21541	Ring - Retainer	47	10287	Bearing - Ball	
7	64130	Handle	48	63576	Spindle - Rotor	
8	64124	Adaptor - Intake (Long)	49	10005	Bearing - Needle	
9	64137	Adaptor - Intake (Remote Exhaust)	50	64140	Counterweight (WO/Lockout) (5" Pad)	
10	63561	Ass'y. - Exhaust Tube		64147	Counterweight (WO/Lockout) (6" Pad)	
11	43223	Ass'y. - Air Hose		51	07097	Screw - Button Hd. Soc. #10-24 x 1/2
12	35633	Lever - Valve (Palm Grip)		52	21751	Ring - Retaining
13	54130	Pin		53	10228	Bearing - Ball
14	35842	Lever - Valve		54	64133	Spindle - Pad
15	64143	Sleeve		55	21513	Ring - Retaining
16	35851	Cover		56	64141	Counterweight (W/Lockout) (5" Pad)
17	07225	Screw - Phil. Pan Hd. #10-32 x 3/8		64148	Counterweight (W/Lockout) (6" Pad)	
18	21392	Spring		57	21223	Spring
19	44753	Plunger - Location		58	10303	Ball - Steel (1/8" Dia.)
20	35234	Washer (4)* (5)* When Used With Thumb Throttle)		59	35845	Ring - Lock
21	11603	Throttle - Thumb		60	64136	Knob
22	44763	Screw - Shoulder		61	07263	Screw - Flat Hd. Cap #10-24 x 5/8
23	06672	Screw - Phil. Rd. Hd. #8-32 x 1/4"		62	05038	Gasket
24	41336	Washer - Belleville		63	35844	Shroud
25	35634	Lever - Output Control		64	07250	Scr. - Pan Hd. #10-32 x 1/2 (Taptite) (4)*
26	21826	Ring - Retaining		65	695	5" PSA Tapered Edge Pad
27	25680	Washer			696	6" PSA Tapered Edge Pad
28	14312	Ring - "O" (1/16 x 7/16 x 9/16)		66	35846	Retainer - Motor
29	64132	Control - Output		67	04056	Shroud - Vacuum
30	21211	Spring		68	35847	Retainer - Motor
31	63575	Stem - Valve		69	07251	Screw - Pan Hd. #10-32 x 1 (Taptite) (4)*
32	14291	Ring - "O" (1/16 x 1/4 x 3/8)		70	585V	5" Backing Pad, Vacuum Type
33	10442	Bushing			583V	6" Backing Pad, Vacuum Type
34	06205	Screw - Fillister Hd. #6-32 x 5/16 (2)* Taptite		20440R	Plate - Name (Not Shown)	
35	63574	Housing [Also includes (2) Fig. 34, (4) Fig. 64 & (4) Fig. 69]		09954	Screw - Name Plate (2)* (Not Shown)	
36	21545	Ring - Retaining		30605	Wrench 5/8 (Not Shown)	
37	10113	Bearing - Ball				
38	64126	Plate - Upper End				
39	64125	Cylinder				
40	33597	Vane - Rotor (Set of 4)				

*Order Quantity As Needed

**SIoux
TOOLS INC.**

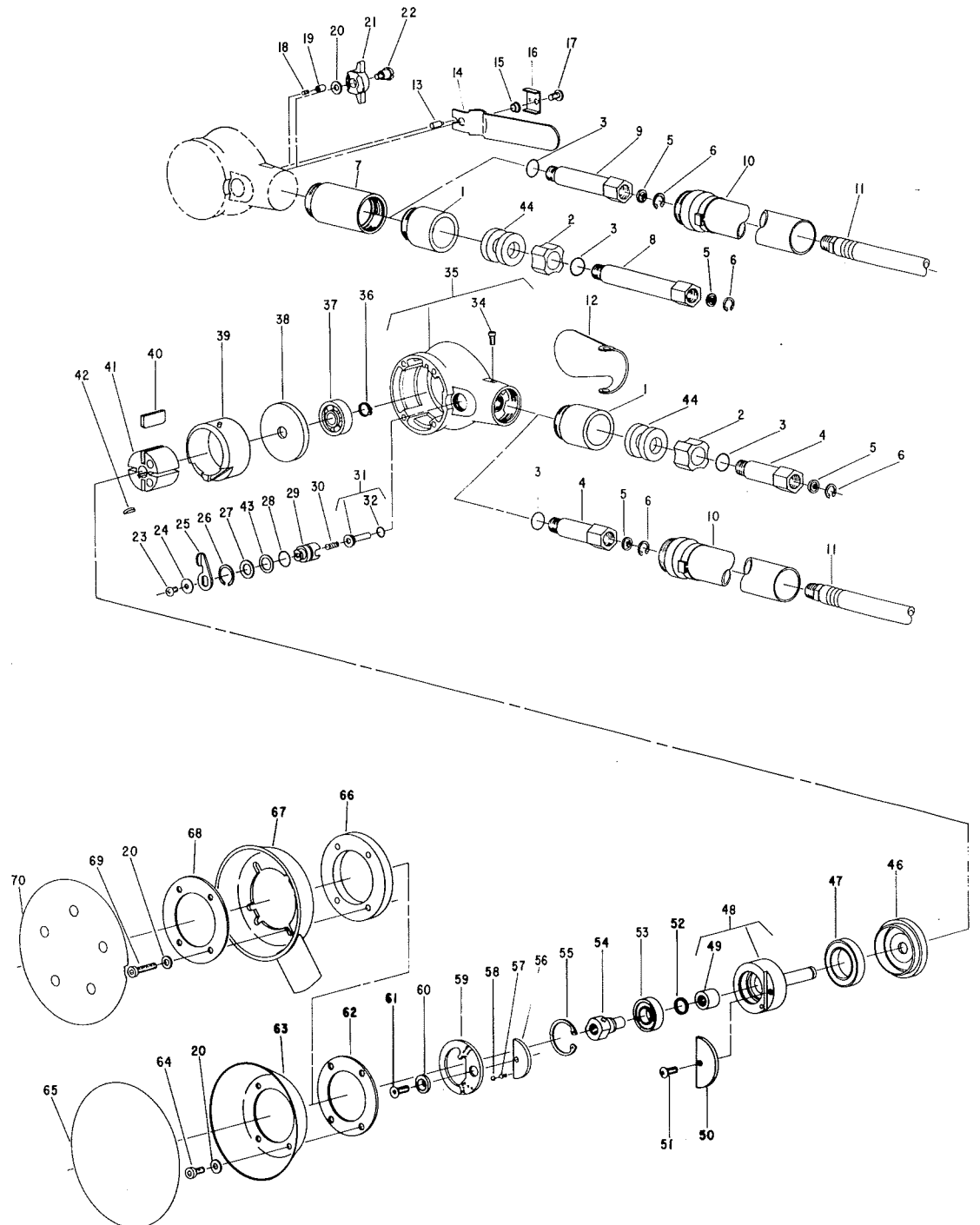
2901 FLOYD BOULEVARD ■ SIOUX CITY, IOWA 51102 ■



AIR RANDOM ORBITAL SANDER 603, 626, 658, 660, 690 & 697

Includes B, H, V & X Suffixes
(SERIAL "A")

FURNISH CATALOG, SERIAL AND MODEL NO. WHEN ORDERING PARTS



SIoux TOOLS INC.

2901 FLOYD BOULEVARD ■ SIOUX CITY, IOWA 51102 ■

This pdf incorporates the following model numbers:

603, 626, 658, 660, 690, 697