



NOTE: Parts are no longer available for this tool.

The manual will continue on the next page.



Instructions and Parts List for 1449HPB DRILL

(Serial B)

AIR SUPPLY

The efficiency and life of this tool depend on the proper supply of clean, dry, lubricated air at about 90 lbs. P.S.I., although higher or lower pressures may be used. The use of an air line filter, pressure regulator and lubricator is recommended.

Before connecting the tool, blow the air line to remove water and dirt which may have accumulated. This is especially important for a new line or when the line has not been used for some time.

HOSE AND HOSE CONNECTION

The air supply hose is 3/8" I.D. If extension hose is necessary, use 1/2" hose, with couplings not less than 3/8" I.D.

LUBRICATION

An oil supply to the air motor is important. SIOUX air line lubricators are recommended. Adjust to deliver 2 drops of SIOUX Air Motor Oil No. 288 per minute. When air line lubricator is not used, place 10-15 drops of SIOUX No. 288 oil into the air inlet twice daily.

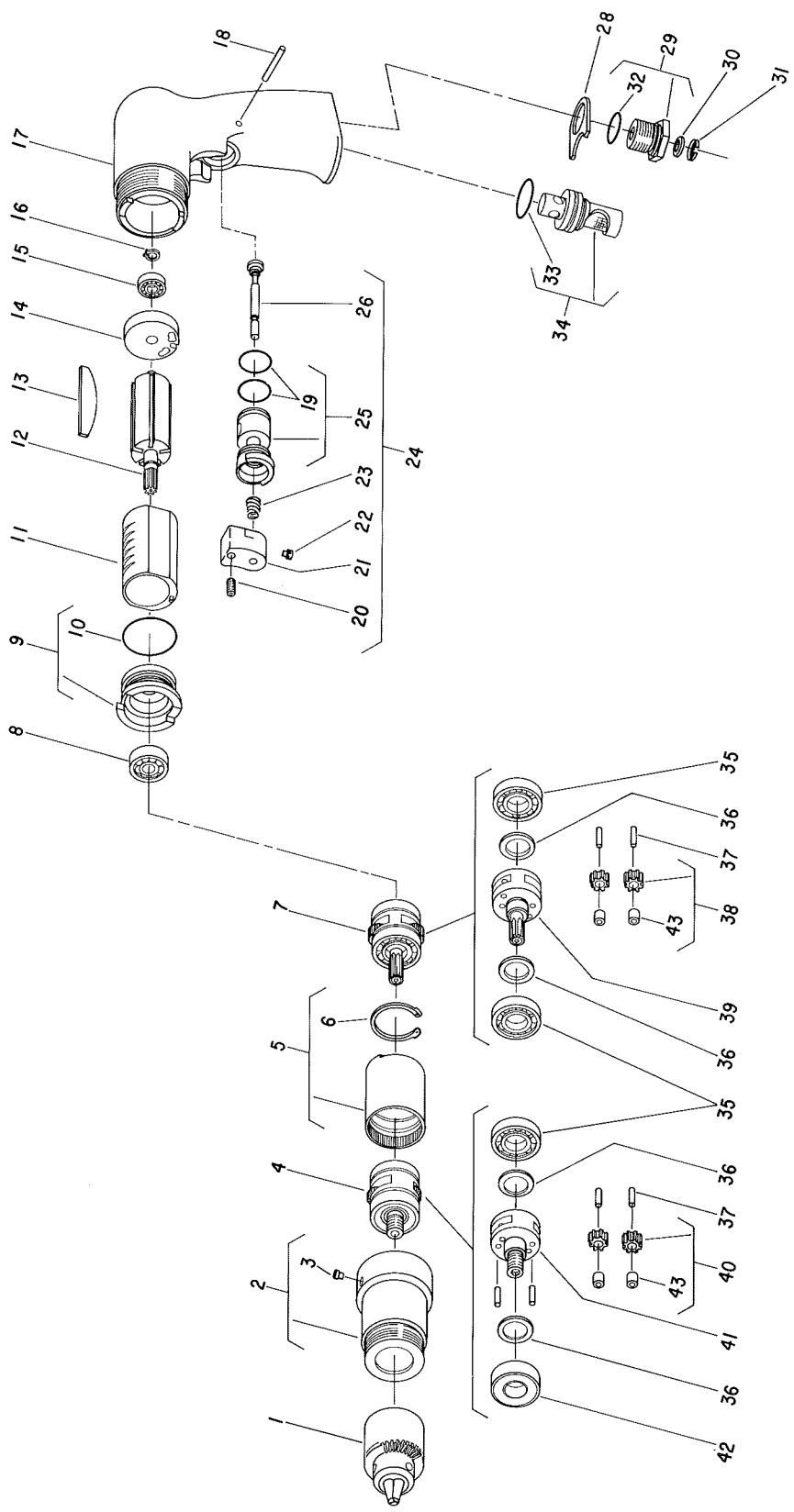
OPERATION

This tool is equipped with a teasing throttle. By slightly depressing the trigger the chuck will rotate slowly. This is useful for starting a drill bit without first spotting with a punch. By fully depressing the trigger the chuck will rotate at its top speed.

If the gear case is removed or loosened, retighten to 35 ft. lb.

**SIOUX
TOOLS INC.**

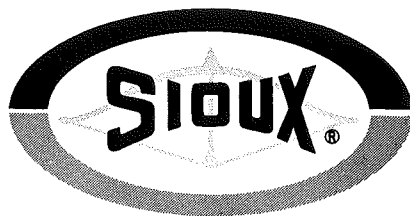
2901 FLOYD BOULEVARD ■ SIOUX CITY, IOWA 51102 ■



Parts List For 1449HPB 1/2" Drill Non. Rev. (450 R.P.M.)

Fig- ure	Part No.	Name	Fig- ure	Part No.	Name
1	21137	Chuck (5/64"-1/2" Cap)	23	21401	Spring
	30011	Key—Chuck	24	63359	Ass'y.—Trigger
2	64003	Case—Gear	25	11600	Body—Valve
3	30375	Fitting—Grease	26	54222	Valve
4	63436	Ass'y.—Planetary Reduction	28	54968	Retainer—Exhaust
5	19266	Gear—Ring	29	54955	Adaptor—Inlet
6	21510	Ring—Retainer	30	30463	Screen
7	63386	Ass'y.—Planetary Reduction	31	21541	Ring—Retainer
8	10220	Bearing—Ball	32	14281	Ring—"O"
9	13550	End Plate—Front	33	14366	Ring—"O"
10	14342	Ring—"O"	34	63545	Ass'y.—Silencer
11	64108	Cylinder	35	10203	Bearing—Ball (3)*
12	54861	Rotor—8 Tooth	36	25439	Washer (4)*
13	63192	Ass'y.—Rotor Vane (Set of 5)	37	30062	Pin (4)*
14	10554	End Plate—Rear	38	19314	Ass'y.—Gear & Bearing (2)*
15	10230	Bearing—Ball	39	64160	Carrier—Gear
16	21491	Ring—Retainer	40	19314	Ass'y.—Gear & Bearing (2)*
17	12660	Housing	41	22704	Carrier—Gear
18	40157	Pin—Dowel (1/8"x1 1/8")	42	10228	Bearing—Ball
19	14378	Ring—"O" (2)*	43	10040	Bearing—Needle (4)*
20	06459	Screw—Set (#8-32x3/16")	44	35798	Washer
21	12676	Trigger		2355	Ass'y.—Dead Handle (Not Shown)
22	06458	Screw—Set (#8-32x3/16")			

*Order Quantity As Needed



GENERAL SAFETY PRECAUTIONS FOR AIR TOOLS

1. **KEEP WORK AREA CLEAN:** Cluttered areas and benches invite accidents.
2. **AVOID DANGEROUS ENVIRONMENT:** Keep work area well lit.
3. **KEEP CHILDREN AWAY:** All visitors should be kept safe distance from work area.
4. **STORE IDLE TOOLS:** When not in use, tools should be stored in dry, high or locked-up place—out of reach of children.
5. **DON'T FORCE TOOL:** It will work best and safest at the designed rate.
6. **USE RIGHT TOOL:** Don't force small tool to do the job of a heavy-duty tool.
7. **WEAR PROPER APPAREL:** No loose clothing or jewelry to get caught in moving parts.
8. **USE SAFETY GLASSES:** Use safety glasses with most tools. Also face or dust mask if it is a cutting operation.
9. **SECURE WORK:** Use clamps or vise to hold work. It's safer than using your hand and it allows freedom of both hands to hold tool.
10. **DON'T OVERREACH:** Keep proper footing and balance at all times.
11. **MAINTAIN TOOLS WITH CARE:** Keep tools sharp and clean for best and safest performance. Follow instructions for lubricating and changing accessories.
12. **DISCONNECT TOOLS:** When not in use; before servicing; when changing accessories such as blades, bits, cutter, etc.
13. **REMOVE ADJUSTING KEYS AND WRENCHES:** Form habit of checking to see that keys and adjusting wrenches are removed from tool before turning it on.
14. **CAUTION:** The use of an accessory with this tool not provided or specified by SIOUX TOOLS may be hazardous.

**SIOUX
TOOLS INC.**

2901 FLOYD BOULEVARD ■ SIOUX CITY, IOWA 51102 ■

PRINTED IN U.S.A.

This pdf incorporates the following model numbers:

1449HPB