



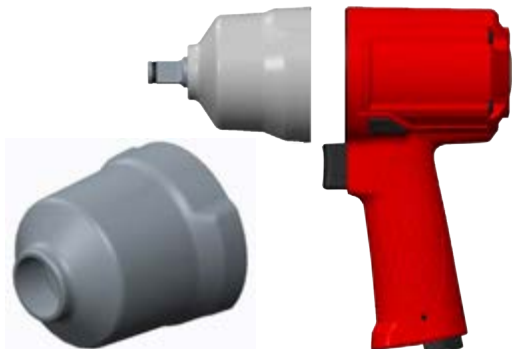
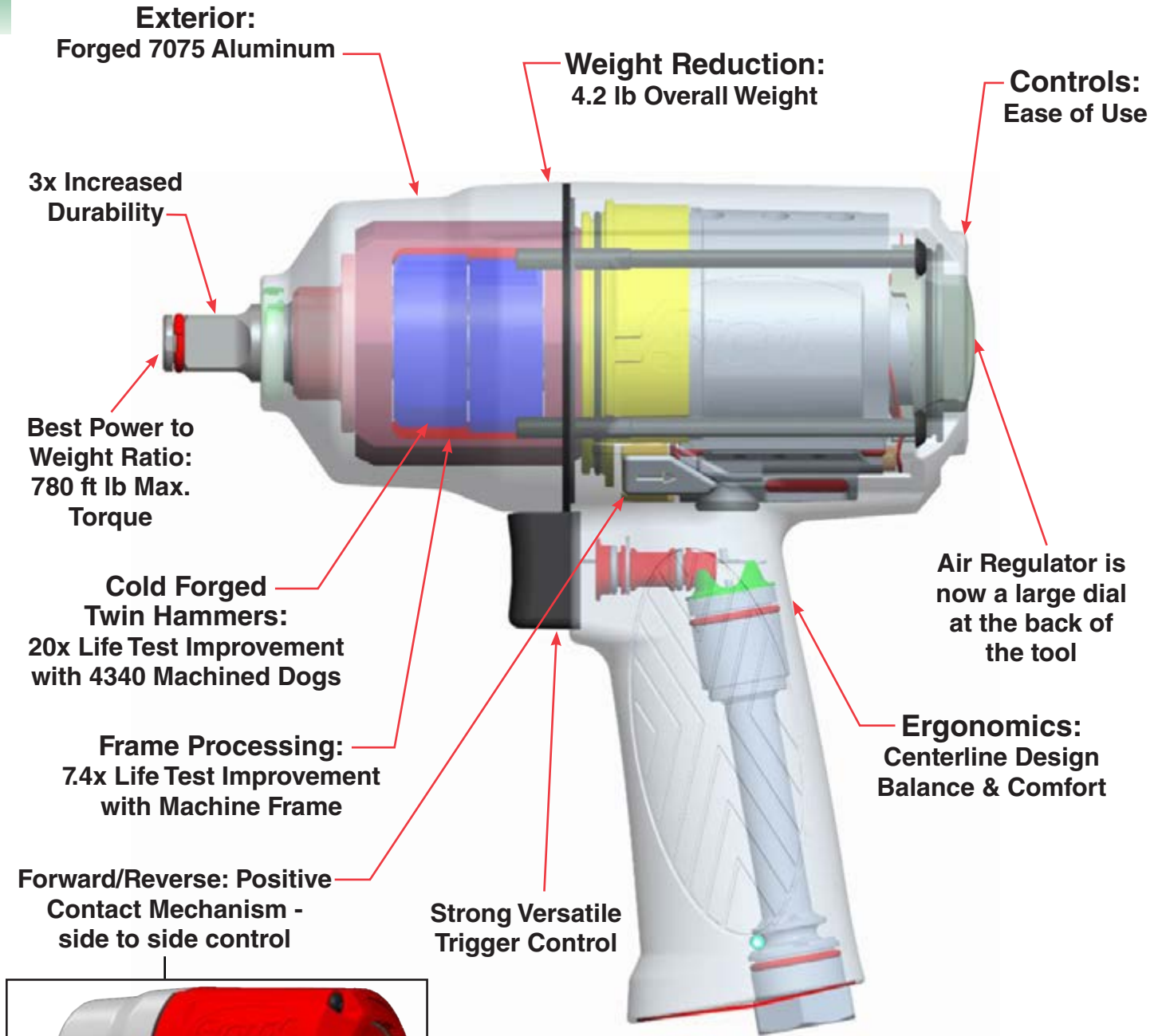
**IS MAKING
A DIFFERENCE**



**THE
NEW
1/2"
IMPACT**

GENERATION X:
Xtra Life • Xtra Torque • Xtra Power
COMING OF AGE!

IW500MP Usability and Ergonomics



Two Piece Design with Targeted Housing Properties

- Forged Aluminum Nose and Glass filled Nylon Housing with over mold
- A two piece design provides the opportunity to use select materials in the specific areas to achieve the desired durability and performance.

Durability

DOGS

- Improved material and full part density
- Improved dimensional control
- Shot-peened; increase durability

Cold Forge Process

- Life = 20X (based on component test with 4340 machined dogs)
- Fully dense (7.82gm/cc)
- Tight dimensional control

FRAME

- Wrought material with machined/forged part (eliminate porosity)
- Precision machining of critical features; improve load distribution of mechanism
- Improved shot-peen process to increase durability
- Shot peen processing to increase fatigue strength
- Precision machined alignment holes

Frame Processing

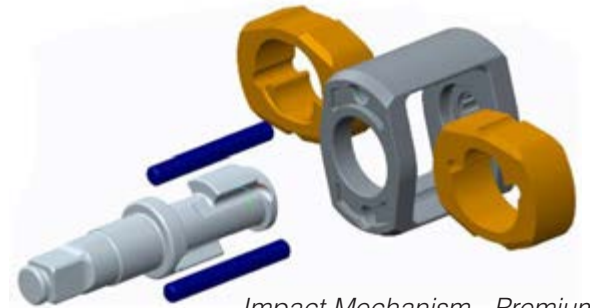
- Life = 7.4X (based on machined frame)
- Maximum pin hole taper = 0.010"
- Porosity = 0%

ANVIL

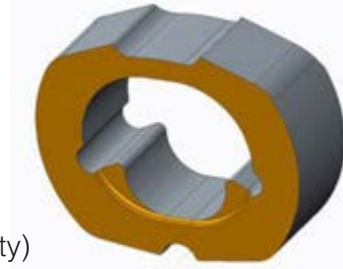
- Tighter raw material controls
- Anvil wing dimensionally optimized to provide better contact/impact and wear resistance
- Extended anvil wing shoulder to increase contact area (durability)
- Life = 3.2X plus less wing edge wear
- 0.123" contact length
- New design shape with extra material at impact stress points
- E4820 low phosphorous and low sulfur

Exterior Nose

- Forged 7075 Aluminum - Material of Choice
- Toughness & Wear Properties
- Simulation Evaluation & Physical Drop Tests



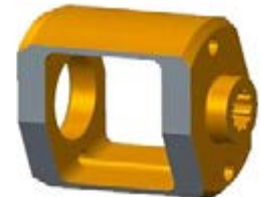
Impact Mechanism - Premium



Frame



Forged Frame Blank



Final Machined Frame



Anvil



New "Power-Flare" Geometry reduces stress and increases productivity

IW500MP Features & Benefits

- Built in Murphy, NC
- **Power** - Range of power offerings to service customer needs
- **Durability** - Design focus: robust impact mechanism
- **Power/Weight** - Built upon power with a focus on weight reduction
- **Ergonomics** - Implement principles associated with grip biomechanics, anthropometry, and muscle physiology
- **Handle:** Composite
- **Nose Material:** Forged 7075 Aluminum
- **Frame:** Machined
- **Dogs:** Cold Forged Steel
- **Trigger:** Hard (Composite)



1/2" Impacts

Model Number	Drive Size		Bolt Cap Grade 5		Working Torque Range ¹		Max. Torque		Blows Per Minute	Free Speed	Weight		Length		Side to Center		Avg Air Consumption		Sound Level	Socket Retainer Style
	in	mm	in	mm	ft lb	Nm	ft lb	Nm			rpm	lb	kg	in	mm	in	mm	cfm		
IW500MP-4P	1/2	13	5/8	10	100-624	135-845	780	1058	1200	9400	4.2	1.9	7	178	1.5	38	4	2	94	Pin
IW500MP-4R	1/2	13	5/8	10	100-624	135-845	780	1058	1200	9400	4.2	1.9	7	178	1.5	38	4	2	94	Ring

Air Inlet Size: 1/4" NPT • Recommended Hose Size: 3/8" (10 mm) • Performance rated @ 90 psig (6.2 bar) air pressure

siouxtools.com



250 Snap-on Drive
 P.O. Box 1596
 Murphy, North Carolina USA 28906
 PH: 828.835.9765
 FAX: 828.835.9685
 TOLL FREE: 866.259.7291
 TOLL FREE FAX: 800.722.7236

Benelux
 Tel: (N) +31-(0)880-104000
 (B) +32 (0)14-231967
 Fax: (N) +31-(0)880-104010
 (B) +32 (0)14-232627
 e-mail: (N) industrial.nl@snapon.com
 (B) industrial.be@snapon.com

Latin America
 Tel.: 305-271-0944
 Fax: 305-271-7152
 e-mail: latinamerica.caribbean@snapon.com

Germany
 Tel.: 49 2104 9509-0
 Fax: 49 2104 9509-99
 e-mail: indus.germany@snapon.com

Italy
 Tel.: 00 39 02 66 04 53 70
 Fax: 00 39 02 61 29 78 15
 e-mail: indus.italia@snapon.com

United Kingdom
 Tel.: 44 (0) 1536-413904
 Fax: 44 (0) 1536-413874
 e-mail: industrialuk@snapon.com



Asia
 Tel.: 65-6451-5570
 Fax: 65-6451-5574
 email: esales.sg@snapon.com

Australia
 Tel.: 61 2 9837 9100
 Fax: 61 2 9624 2578
 e-mail: SOTA.customerservice@snapon.com