

MANUFACTURED HOUSING / RV / MARINE



For The
Way...
You Work!



**SIoux
TOOLS INC.**

A *Snap-on* Company

Innovative, Ergonomic, Rugged and Dependable

A Proven History of Dedication

For over 40 years, Sioux Tools has met the demands of the Manufactured Housing, RV and Marine industries. Through advanced engineering, industry research and operator input, Sioux has engineered a tool program that is designed for the way you work! No matter what industry you are in, we've got you covered. From Manufactured Housing and RV to Maintenance and Marine, our tool program will deliver the power and durability you need.

Mission

To create and serve customers with quality products and service that meet or exceed their expectations.

A History of Success

Sioux Tools has a long and proud heritage of innovation as they have helped to shape the face of the tool industry. The company was started in November of 1914 by Swedish tool maker, Oscar Albertson, and office boy, Harold Jacobson, with a goal to become the "best machine and tool shop". Sioux has since grown to become a trusted partner by a wide range of industrial and manufacturing segments.

Originally named Albertson & Company, the first items manufactured were piston rings, spark plugs and a gas saver. They soon expanded their line to become a powerful force in the marketplace. In early 1917, Oscar Albertson designed a valve lathe- a hand tool used to seat engine valves. This invention proved to be the foundation upon which Sioux Tools has built a reputation for innovation throughout the world.

During the 1920s the company revolutionized the tool industry by introducing some of the very first hand held power tools. In 1958 the company further solidified its position as a market leader by designing and producing its first air powered tools. Today, Sioux Tools has been granted well over 100 patents. Innovation, ingenuity and insight have established Sioux tools in the minds of the professional as the tool to depend on. Our commitment to continued development in ergonomics and innovative design ensures that we will meet the needs of professionals for many years to come.

Wherever there are markets for quality-built, reliable products, backed by strong after-sale dedication to customer satisfaction, you'll find Sioux Tools. Today we continue to strive to live up to our founding father's wish of being the "best in the world".

In 1994 Sioux Tools joined Snap-on Incorporated, which added industrial power tools to the extensive Snap-on line. Snap-on Incorporated is a leading global developer, manufacturer and marketer of tool and equipment solutions for professional tool users. Product lines include hand and power tools, diagnostics and shop equipment, tool storage products, diagnostics software and other solutions for the transportation service, industrial, government, education, agricultural, and other commercial applications, including construction and electrical. Founded in 1920, Snap-on is a \$2+ billion, S&P 500 company headquartered in Kenosha, Wisconsin and employs approximately 14,000 worldwide.

Committed to your success

For over 90 years, Sioux Tools has been providing tools that have been designed and built by the best engineers in the country. We use only top-quality materials in our manufacturing process, and we offer the strongest support and warranty in the business. Our over 100 patents are an indication of our innovation in product development and design.

Sioux Tools are built tough to provide you with many years of trouble-free service. But as with any piece of equipment, service problems can occur, thus Sioux tools are designed to make servicing quick, easy and affordable.

To help ensure fast repairs, which in turn limit downtime, Sioux Tools offers training seminars that cover all the details of the tools we make. For information on our training program, please contact your local Sioux Tools representative.



SIGNATURE SERIES DRILLS



SDR10P26NK3



SDR10S26N3



SDR6P26N3



SDR10P25R3



Drills

Model Number	Free Speed	Chuck Capacity		Air Consumption		Sound Level	Spindle Thread
	rpm	in.	mm	scfm	l/s	dB(A)	
Pistol Grip Non-Reversing Drills (1.0 HP)							
SDR10P60N2	6,000	1/4	6	30	14.2	80	3/8"-24
SDR10P60N3	6,000	3/8	10	30	14.2	80	3/8"-24
SDR10P40N2	4,000	1/4	6	30	14.2	80	3/8"-24
SDR10P40N3	4,000	3/8	10	30	14.2	80	3/8"-24
SDR10P26N2	2,600	1/4	6	30	14.2	80	3/8"-24
SDR10P26N3	2,600	3/8	10	30	14.2	80	3/8"-24
SDR10P26N4	2,600	1/2	13	30	14.2	80	1/2"-20
SDR10P12N3	1,200	3/8	10	30	14.2	80	3/8"-24
SDR10P7N3	700	3/8	10	30	14.2	80	1/2"-20
SDR10P7N4	700	1/2	13	30	14.2	80	1/2"-20
SDR10P4N3	400	3/8	10	30	14.2	80	1/2"-20
SDR10P4N4	400	1/2	13	30	14.2	80	1/2"-20
Pistol Grip Non-Reversing Keyless Chuck Drills (1.0 HP) with Röhm Chucks							
SDR10P60NK3	6,000	3/8	10	30	14.2	80	3/8"-24
SDR10P40NK3	4,000	3/8	10	30	14.2	80	3/8"-24
SDR10P26NK3	2,600	3/8	10	30	14.2	80	3/8"-24
SDR10P26NK4	2,600	1/2	13	30	14.2	80	1/2"-20
SDR10P12NK3	1,200	3/8	10	30	14.2	80	3/8"-24
SDR10P7NK4	700	1/2	13	30	14.2	80	1/2"-20
SDR10P4NK4	400	1/2	13	30	14.2	80	1/2"-20
Pistol Grip Reversing Drills (1.0 HP)							
SDR10P40R2	4,000	1/4	6	30	14.2	80	3/8"-24
SDR10P40R3	4,000	3/8	10	30	14.2	80	3/8"-24
SDR10P25R2	2,500	1/4	6	30	14.2	80	3/8"-24
SDR10P25R3	2,500	3/8	10	30	14.2	80	3/8"-24
SDR10P20R2	2,000	1/4	6	30	14.2	80	3/8"-24
SDR10P20R3	2,000	3/8	10	30	14.2	80	3/8"-24
SDR10P20R4	2,000	1/2	13	30	14.2	80	1/2"-20
SDR10P7R3	700	3/8	10	30	14.2	80	1/2"-20
SDR10P7R4	700	1/2	13	30	14.2	80	1/2"-20
SDR10P5R3	500	3/8	10	30	14.2	80	1/2"-20
SDR10P5R4	500	1/2	13	30	14.2	80	1/2"-20
SDR10P3R3	300	3/8	10	30	14.2	80	1/2"-20
SDR10P3R4	300	1/2	13	30	14.2	80	1/2"-20
Inline Non-Reversing Drills (1.0 HP)							
SDR10S60N2	6,000	1/4	6	30	14.2	78	3/8"-24
SDR10S60N3	6,000	3/8	10	30	14.2	78	3/8"-24
SDR10S40N2	4,000	1/4	6	30	14.2	78	3/8"-24
SDR10S40N3	4,000	3/8	10	30	14.2	78	3/8"-24
SDR10S26N2	2,600	1/4	6	30	14.2	78	3/8"-24
SDR10S26N3	2,600	3/8	10	30	14.2	78	3/8"-24
SDR10S12N3	1,200	3/8	10	30	14.2	78	3/8"-24
SDR10S7N3	700	3/8	10	30	14.2	78	1/2"-20
SDR10S4N3	400	3/8	10	30	14.2	78	1/2"-20
SDR10S4N4	400	1/2	13	30	14.2	78	1/2"-20

SIGNATURE SERIES DRILLS



Drills Continued

Model Number	Free Speed	Chuck Capacity		Air Consumption		Sound Level	Spindle Thread
	rpm	in.	mm	scfm	l/s	dB(A)	
Pistol Grip Non-Reversing Drills (0.6 HP)							
SDR6P60N2	6,000	1/4	6	25	11.8	80	3/8"-24
SDR6P60N3	6,000	3/8	10	25	11.8	80	3/8"-24
SDR6P40N2	4,000	1/4	6	25	11.8	80	3/8"-24
SDR6P40N3	4,000	3/8	10	25	11.8	80	3/8"-24
SDR6P26N2	2,600	1/4	6	25	11.8	80	3/8"-24
SDR6P26N3	2,600	3/8	10	25	11.8	80	3/8"-24
SDR6P26N4	2,600	1/2	13	25	11.8	80	1/2"-20
SDR6P12N3	1,200	3/8	10	25	11.8	80	3/8"-24
SDR6P7N3	700	3/8	10	25	11.8	80	1/2"-20
SDR6P7N4	700	1/2	13	25	11.8	80	1/2"-20
SDR6P4N3	400	3/8	10	25	11.8	80	1/2"-20
SDR6P4N4	400	1/2	13	25	11.8	80	1/2"-20
Pistol Grip Non-Reversing Keyless Chuck Drills (0.6 HP) with Röhm Chucks							
SDR6P60NK3	6,000	3/8	10	25	11.8	80	3/8"-24
SDR6P40NK3	4,000	3/8	10	25	11.8	80	3/8"-24
SDR6P26NK3	2,600	3/8	10	25	11.8	80	3/8"-24

Drill Maintenance

- 1 Tipper valve and valve seat is easily accessible for service
- 2 Slip fit of front end plate bearing allows easy service of the air motor without disturbing the rotor spacing
- 3 Drop in motor. No allignment necessary (applies to non-reversing drills only)
- 4 Rotor pinion is case hardened to resist wear
- 5 Grease zerk makes it easy to grease the gears without disassembly
- 6 Planetary reduction can be serviced without removing the chuck
- 7 Planet gear pins are slip fit for ease of assembly and disassembly
- 8 Ring gear is machined into the motor retainer for ease of assembly and disassembly
- 9 Interchangeable rotor, cylinder, bearings and endplates. This reduces the number of spare parts tool cribs need to stock



SIGNATURE SERIES SCREWDRIVERS



Pistol Grip Screwdrivers

Model Number	Max. Torque (Soft Joint)		Free Speed rpm	Weight		Length		Side to Center		Air Consumption		Sound Level dB(A)
	in. lb	Nm		lb	kg	in.	mm	in.	mm	scfm	l/s	
Stall Screwdrivers												
SSD10P25S	58	6.5	2,500	2.16	0.98	6.5	165	0.8	20	30	14.2	80
SSD10P20S	80	9.0	2,000	2.16	0.98	6.5	165	0.8	20	30	14.2	80
SSD10P12S	145	16.4	1,200	2.59	1.17	7.5	191	0.8	20	30	14.2	80
SSD10P7S	220	24.8	700	2.59	1.17	7.5	191	0.8	20	30	14.2	80
SSD10P5S	325	36.7	500	2.59	1.17	7.5	191	0.8	20	30	14.2	80
SSD10P3S	400	45.2	300	2.59	1.17	7.5	191	0.8	20	30	14.2	80
Positive Clutch												
SSD10P25PS	58	6.5	2,500	2.35	1.07	7.3	185	0.8	20	30	14.2	80
SSD10P20PS	80	9.0	2,000	2.35	1.07	7.3	185	0.8	20	30	14.2	80
SSD10P12PS	145	16.4	1,200	2.78	1.26	9.1	231	0.8	20	30	14.2	80
Adjustable Clutch												
SSD10P25AC	60	6.8	2,500	2.76	1.25	8.4	213	0.8	20	30	14.2	80
SSD10P20AC	80	9.0	2,000	2.76	1.25	8.4	213	0.8	20	30	14.2	80
SSD10P12AC	120	13.5	1,200	3.19	1.45	10.2	259	0.8	20	30	14.2	80
SSD10P7AC	140	15.8	700	3.19	1.45	10.2	259	0.8	20	30	14.2	80
SSD10P5AC	140	15.8	500	3.19	1.45	10.2	259	0.8	20	30	14.2	80
SSD10P3AC	140	15.8	300	3.19	1.45	10.2	259	0.8	20	30	14.2	80

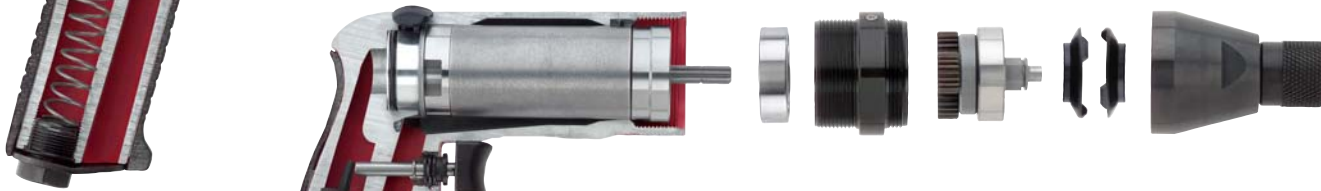


Screwdriver Maintenance

Adjustable Clutch Screwdrivers



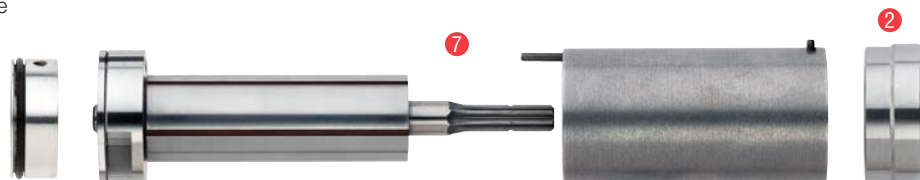
Positive Clutch Screwdrivers



Stall Drive Screwdrivers



- 1 Tipper valve and valve seat is easily accessible for service
- 2 Slip fit of front end plate bearing allows easy service of the air motor without disturbing the rotor spacing
- 3 Rotor pinion is case hardened to resist wear
- 4 Grease zerk makes it easy to grease the gears without disassembly
- 5 Ring gear is machined into the motor retainer for ease of assembly and disassembly
- 6 Planet gear pins are slip fit for ease of assembly and disassembly
- 7 Interchangeable rotor, cylinder, bearings and endplates. This reduces the number of spare parts tool cribs need to stock



SIGNATURE SERIES DIE GRINDERS



SXG10S23R



SDG10S25F



SDG7S25F



Die Grinders / Cutoff Tools

Model Number	Free Speed	Weight		Length		Air Consumption		Sound Level	Collet Size	Exhaust
	rpm	lb	kg	in.	mm	scfm	l/s	dB(A)		
Straight Die Grinders (0.7 HP)										
SDG7S25F	25,000	1.2	0.55	6	150	25	11.8	82	1/4"	Front
SDG7S25M6F	25,000	1.2	0.55	6	150	25	11.8	82	6mm	Front
SDG7S18F	18,000	1.2	0.55	6	150	25	11.8	82	1/4"	Front
SDG7S18M6F	18,000	1.2	0.55	6	150	25	11.8	82	6mm	Front
Straight Die Grinders (1HP)										
SDG10S25F	25,000	1.65	0.75	7.50	190	30	14.2	77.7	1/4"	Front
SDG10S25M6F	25,000	1.65	0.75	7.50	190	30	14.2	77.7	6mm	Front
SDG10S25R	25,000	1.65	0.75	7.50	190	30	14.2	77.7	1/4"	Rear
SDG10S25M6R	25,000	1.65	0.75	7.50	190	30	14.2	77.7	6mm	Rear
SDG10S18F	18,000	1.65	0.75	7.50	190	30	14.2	77.7	1/4"	Front
SDG10S18M6F	18,000	1.65	0.75	7.50	190	30	14.2	77.7	6mm	Front
SDG10S18R	18,000	1.65	0.75	7.50	190	30	14.2	77.7	1/4"	Rear
SDG10S18M6R	18,000	1.65	0.75	7.50	190	30	14.2	77.7	6mm	Rear
SDG10S12F	12,000	1.65	0.75	7.50	190	30	14.2	77.7	1/4"	Front
SDG10S12M6F	12,000	1.65	0.75	7.50	190	30	14.2	77.7	6mm	Front
SDG10S12R	12,000	1.65	0.75	7.50	190	30	14.2	77.7	1/4"	Rear
SDG10S12M6R	12,000	1.65	0.75	7.50	190	30	14.2	77.7	6mm	Rear
SDG Directional Exhaust Conversion Kit Available. Part Number SDG-EXH										
Extended Die Grinders (1HP)										
SXG10S23R	23,000	2.20	1.00	12.10	308	30	14.2	77.7	1/4"	Rear
SXG10S23M6R	23,000	2.20	1.00	12.10	308	30	14.2	77.7	6mm	Rear
SXG10S18R	18,000	2.20	1.00	12.10	308	30	14.2	77.7	1/4"	Rear
SXG10S18M6R	18,000	2.20	1.00	12.10	308	30	14.2	77.7	6mm	Rear
SXG10S12R	12,000	2.20	1.00	12.10	308	30	14.2	77.7	1/4"	Rear
SXG10S12M6R	12,000	2.20	1.00	12.10	308	30	14.2	77.7	6mm	Rear

Collet Sizes Available as Accessory

- 1/8" ColletPart Number: 74072
- 3/16" ColletPart Number: 74073
- 1/4" ColletPart Number: 74074
- 3/8" ColletPart Number: 68030
- 3mm ColletPart Number: 74075
- 6mm Collet.....Part Number: 74076
- 8mm ColletPart Number: 68056

SIGNATURE SERIES CUTOFF TOOLS



SCO10S253F

Cutoff Tools (1HP)

Model Number	Free Speed	Weight		Length		Air Consumption		Sound Level	Wheel Size	Exhaust
	rpm	lb	kg	In.	mm	scfm	l/s	dB(A)		
SCO10S253F	25,000	2.00	0.90	8.25	210	30	14.2	77.7	3"	Front
SCO10S253R	25,000	2.00	0.90	8.25	210	30	14.2	77.7	3"	Rear

Abrasive Features



- 1 Available with Front or Rear Exhaust – Can be easily converted from front to rear exhaust with optional kit Part Number: SDG-EXH
- 2 Ball Bearing Construction
- 3 Precision Machined Powdered Metal Cylinder
- 4 Teasing Throttle
- 5 Positive Rotor Spacing – Rotor spacing remains secure and does not rely on a press fit
- 6 Precision Machined Steel End Plates
- 7 Aluminum Housing with glass filled nylon cover
- 8 Over Molded Comfort Grip (Provides a secure grip)
- 9 Built-in Speed Control

Abrasive safety

The following instructions are important and should be followed explicitly but cannot cover all contingencies. Good judgment is always required.

Proper eye protection must be worn at all times by tools user and bystanders. Keep hands and other body parts away from grinding wheels and sanding pads and disks to prevent cutting or pinching. Wear protective clothing and gloves to protect hands. Secure work; use clamps or vise to hold work. Be sure actuator is off before hooking up air. Check the speed rating of the accessory or the speed printed on the wheel. This speed must be greater than the name plate speed of the grinder and the actual speed of the grinder as measured with a tachometer. Be sure tool has come to a complete stop before setting it aside. Always remove tool from air supply and activate trigger to bleed air line before making any adjustments, changing accessories, or doing any maintenance or service on tool.

Grinders

The grinder is to be operated with an appropriate guard at all times when a grinding wheel is used. Replace a damaged guard. The guard is to be the proper one for the wheel being used. Be certain that all wheel, flanges, nuts and related equipment are in good shape, the proper ones for the type and size of wheel being used, and are securely fastened. Tighten collet securely. Match wheel or accessory shaft diameter to chuck or collet. Only grind metals if the area is free of combustible or explosive materials or vapors. Do not use cut off wheels or router bits with die grinders. If the normal sound of the grinder changes, or if it vibrates excessively, shut it off immediately, remove the wheel, and check speed with tachometer. Check the wheel for damage before mounting, look for chips and cracks. Handle wheels carefully to avoid dropping or bumping. Protect wheels from extremes of temperature and humidity. Check wheels immediately after any unusual occurrence that may damage wheels.

SIGNATURE SERIES RANDOM ORBITAL SANDERS



RO2512-50FVP



RO2512-50SRP



RO2512-50SNP

Random Orbital Sanders



Model Number	Free Speed	Pad Size		Orbit Diameter		Weight		Height		Air Consumption		Sound Level
	rpm	in.	mm	in.	mm	lb	kg	in.	mm	scfm	l/s	dB(A)
.025 hp (0.19 kw) - 5/16"-24 Spindle Thread-Non-Vacuum												
RO2512-30FNP	12,000	3	75	3/32	3	1.5	0.7	3.26	83	13	6	81
RO2512-30SNP	12,000	3	75	3/16	5	1.5	0.7	3.26	83	13	6	81
RO2512-35FNP	12,000	3.5	90	3/32	3	1.5	0.7	3.26	83	13	6	81
RO2512-35SNP	12,000	3.5	90	3/16	5	1.5	0.7	3.26	83	13	6	81
RO2512-50FNP	12,000	5	125	3/32	3	1.5	0.7	3.26	83	13	6	81
RO2512-50SNP	12,000	5	125	3/16	5	1.5	0.7	3.26	83	13	6	81
RO2512-50CNP	12,000	5	125	3/8	10	1.5	0.7	3.26	83	13	6	81
RO2512-60FNP	12,000	6	150	3/32	3	1.5	0.7	3.26	83	13	6	81
RO2512-60SNP	12,000	6	150	3/16	5	1.5	0.7	3.26	83	13	6	81
RO2512-60CNP	12,000	6	150	3/8	10	1.5	0.7	3.26	83	13	6	81
.025 hp (0.19 kw) - 5/16"-24 Spindle Thread-Remote-Vacuum												
RO2512-30FRP	12,000	3	75	3/32	3	1.5	0.7	3.26	83	13	6	81
RO2512-30SRP	12,000	3	75	3/16	5	1.5	0.7	3.26	83	13	6	81
RO2512-35FRP	12,000	3.5	90	3/32	3	1.5	0.7	3.26	83	13	6	81
RO2512-35SRP	12,000	3.5	90	3/16	5	1.5	0.7	3.26	83	13	6	81
RO2512-50FRP	12,000	5	125	3/32	3	1.5	0.7	3.26	83	13	6	81
RO2512-50SRP	12,000	5	125	3/16	5	1.5	0.7	3.26	83	13	6	81
RO2512-50CRP	12,000	5	125	3/8	10	1.5	0.7	3.26	83	13	6	81
RO2512-60FRP	12,000	6	150	3/32	3	1.5	0.7	3.26	83	13	6	81
RO2512-60SRP	12,000	6	150	3/16	5	1.5	0.7	3.26	83	13	6	81
RO2512-60CRP	12,000	6	150	3/8	10	1.5	0.7	3.26	83	13	6	81
.025 hp (0.19 kw) - 5/16"-24 Spindle Thread-Venturi-Vacuum												
RO2512-30FVP	12,000	3	75	3/32	3	1.5	0.7	3.26	83	13	6	81
RO2512-30SVP	12,000	3	75	3/16	5	1.5	0.7	3.26	83	13	6	81
RO2512-35FVP	12,000	3.5	90	3/32	3	1.5	0.7	3.26	83	13	6	81
RO2512-35SVP	12,000	3.5	90	3/16	5	1.5	0.7	3.26	83	13	6	81
RO2512-50FVP	12,000	5	125	3/32	3	1.5	0.7	3.26	83	13	6	81
RO2512-50SVP	12,000	5	125	3/16	5	1.5	0.7	3.26	83	13	6	81
RO2512-50CVP	12,000	5	125	3/8	10	1.5	0.7	3.26	83	13	6	81
RO2512-60FVP	12,000	6	150	3/32	3	1.5	0.7	3.26	83	13	6	81
RO2512-60SVP	12,000	6	150	3/16	5	1.5	0.7	3.26	83	13	6	81
RO2512-60CVP	12,000	6	150	3/8	10	1.5	0.7	3.26	83	13	6	81

Hook and loop pad options available by replacing the letter "P" in the part number with an "H" (Example: RO2512-50FNH).

SIOUX FINISHING PRODUCTS



SPS10P18



Pistol Grip Sanders

Model Number	Free Speed		Weight		Length		Air Consumption		Sound Level
	rpm		lb	kg	in.	mm	scfm	l/s	
1.0 hp (0.75 kw) - 1/4" Collet									
SPS10P18	18,000		1.7	0.8	4.5	115	30	14	80



1290L



1292L



Vertical Sanders / Polishers

Model Number	Free Speed		Pad Size		Weight		Height		Air Consumption Under Load		Air Consumption Free Speed		Sound Level	Spindle Thread
	rpm		in.	mm	lb	kg	in.	mm	scfm	l/s	scfm	l/s		
1.0 hp (0.75 kw) - Thumb Throttle														
1290L	5000		7	175	4.1	1.9	7.2	183	30	14	38	18	80	5/8"-11
1.0 hp (0.75 kw) - Lever Throttle														
1292L	3000		8	200	4.1	1.9	7.1	180	30	14	38	18	80	5/8"-11

Weight of 1292L includes pad & holder



1287L



1238L

Right Angle Sanders / Polishers

Model Number	Free Speed		Pad Size		Weight		Height		Air Consumption Under Load		Air Consumption Free Speed		Sound Level	Spindle Thread
	rpm		in.	mm	lb	kg	in.	mm	scfm	l/s	scfm	l/s		
1.0 hp (0.75 kw) - Thumb Throttle														
1238L	3000		8	200	7.9	3.6	11.3	287	33	16	16	8	75	5/8"-11
1.0 hp (0.75 kw) - Lever Throttle														
1292L	6000		7	175	5.9	2.7	11.3	287	35	17	18	8	85	5/8"-11

Weight of 1238L includes pad & holder

SIGNATURE SERIES ROUTERS



SRT10S25N



SRT10S25B



SRT10S25BB



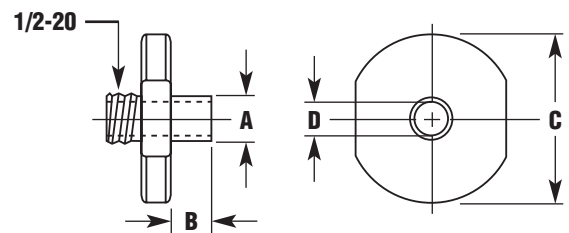
SRT10S25LT

Routers (1 HP)

Model Number	Free Speed	Weight		Length		Air Consumption		Sound Level	Collet Size	Exhaust
	rpm	lb	kg	In.	mm	scfm	l/s	dB(A)		
Template Nose										
SRT10S25N	25,000	2.10	0.95	9.00	230	30	14.2	77.7	1/4"	Front/Side
SRT10S25M6N	25,000	2.10	0.95	9.00	230	30	14.2	77.7	6mm	Front/Side
SRT10S18N	18,000	2.10	0.95	9.00	230	30	14.2	77.7	1/4"	Front/Side
SRT10S18M6N	18,000	2.10	0.95	9.00	230	30	14.2	77.7	6mm	Front/Side
*Template Guides Must Be Ordered Separately										
3" Base										
SRT10S25B	25,000	2.10	0.95	9.00	230	30	14.2	77.7	1/4"	Front/Side
SRT10S25M6B	25,000	2.10	0.95	9.00	230	30	14.2	77.7	6mm	Front/Side
SRT10S18B	18,000	2.10	0.95	9.00	230	30	14.2	77.7	1/4"	Front/Side
SRT10S18M6B	18,000	2.10	0.95	9.00	230	30	14.2	77.7	6mm	Front/Side
SRT10S25BB	25,000	2.55	1.15	8.25	210	30	14.2	77.7	1/4"	Front/Side
SRT10S18BB	18,000	2.55	1.15	8.25	210	30	14.2	77.7	1/4"	Front/Side
Laminate Trimmer										
SRT10S25LT	25,000	2.85	1.30	9.25	235	30	14.2	77.7	1/4"	Front/Side
SRT10S18LT	18,000	2.85	1.30	9.25	235	30	14.2	77.7	1/4"	Front/Side

*Template Guide Chart

Part Number	Dimensions In Inches			
	A Pilot O.D.	B Pilot Length	C Flange O.D.	D Pilot I.D.
68613-12	3/8	1/4	3/4	9/32
68613-14	3/8	3/8	3/4	9/32
68613-16	3/8	1/2	3/4	9/32
68613-22	3/8	1/8	1-1/2	9/32
68613-24	3/8	1/4	1-1/2	9/32
68613-26	3/8	3/8	1-1/2	9/32
68613-40	7/16	1/4	3/4	21/64
68613-42	7/16	3/8	3/4	21/64
68613-44	7/16	1/2	1-1/2	21/64
68613-48	7/16	1/4	1-1/2	21/64
68613-50	7/16	3/8	1-1/2	21/64
68613-52	7/16	1/2	1-1/2	21/64
68613-62	1/2	1/4	1-1/2	11/32
68613-64	1/2	3/8	1-1/2	11/32
68613-66	1/2	1/2	1-1/2	11/32
68613-72	1/2	1/2	2-1/2	11/32



siouxtools.com



250 Snap-on Drive
P.O. Box 1596
Murphy, North Carolina USA 28906
PH: 828.835.9765
FAX: 828.835.9685
TOLL FREE: 866.259.7291
TOLL FREE FAX: 800.722.7236

Benelux
Tel.: (N) 31 (0) 20 568 26 63
(B) 32 (0) 14 23 19 67
Fax: (N) 31 (0) 20 568 26 60
(B) 31 (0) 14 23 26 27
e-mail: snap@snap-on.nl

Latin America
Tel.: 305-271-0944
Fax: 305-271-7152
e-mail: latinamerica.caribbean@snapon.com

Germany
Tel.: 49 2104 9509-0
Fax: 49 2104 9509-99
e-mail: snapon.industrial@snapon.com

Italy
Tel.: 00 39 02 66 04 53 70
Fax: 00 39 02 61 29 78 15
e-mail: indus.italia@snapon.com

United Kingdom
Tel.: 44 (0) 1536-413904
Fax: 44 (0) 1536-413874
e-mail: industrialuk@snapon.com

Asia
Tel.: 65-6451-5570
Fax: 65-6451-5574
email: esales.sg@snapon.com

Australia
Tel.: 61 2 9837 9100
Fax: 61 2 9624 2578
e-mail: SOTA.customerservice@snapon.com

Distributed By:

FORM# ZML0122 • PRINTED IN USA • Date: 01/08 • 5M

