



PARTS LIST FOR
TORQUE CONTROL SCREWDRIVER CLUTCH (68020)
TORQUE CONTROL QUICK CHANGE CLUTCH (68021)
USED ON "1ST" AND "10T" SERIES TOOLS

Form Z527
 Date 8-99/B
 Page 1 of 1

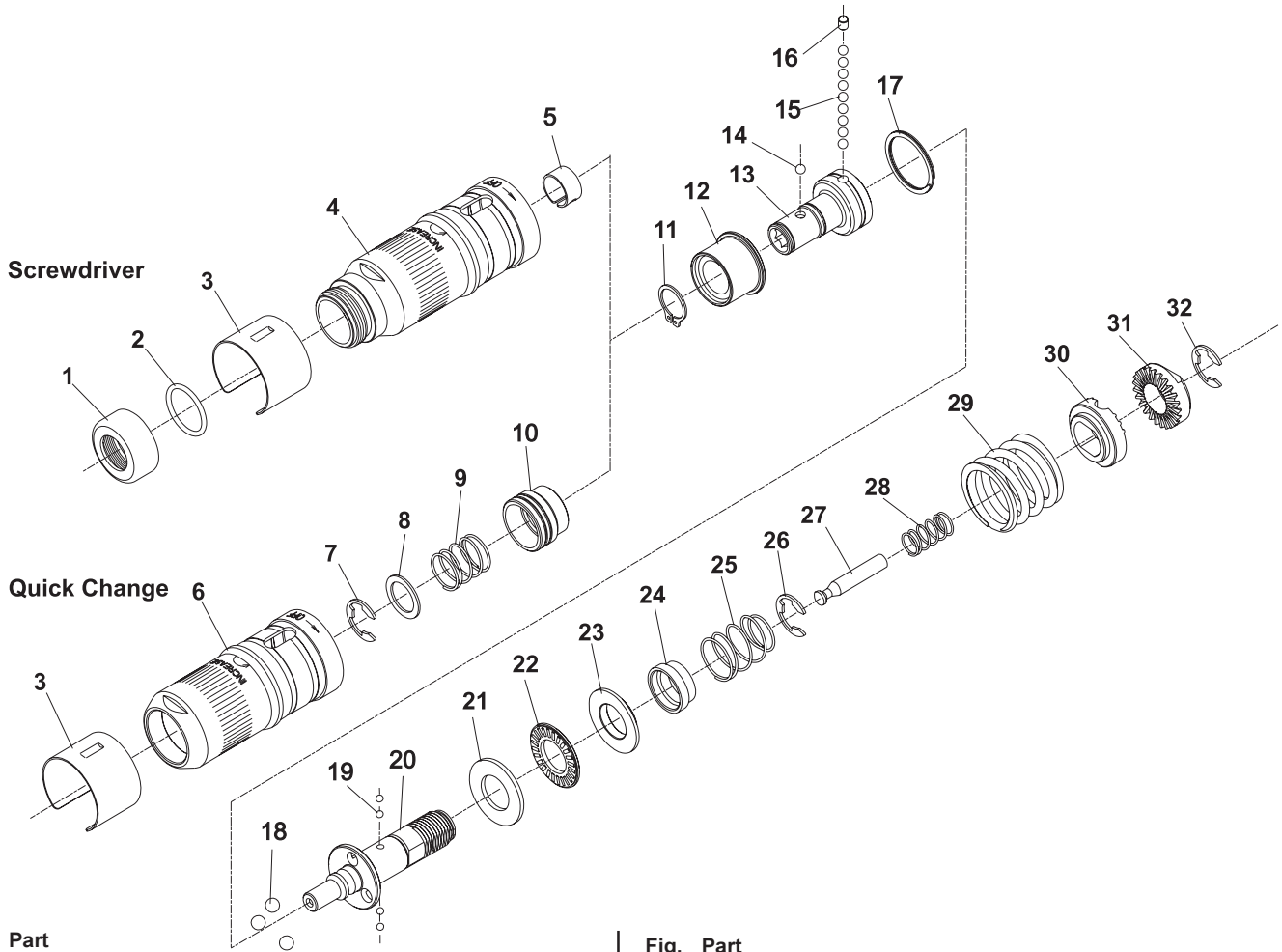


Fig. No.	Part No.	Description
	1.	54076 Protector—Thread
	2.	14281 Ring—"O"
	3.	66058 Cover
	4.	67153 Case—Clutch (Screwdriver)
	5.	25854 Ring—Ball Retainer
	6.	67152 Case—Clutch (Quick Change)
	7.	21493 Ring—Retaining
	8.	35228 Washer
	9.	41204 Spring
	10.	66060 Collar
	11.	21451 Ring—Retaining
	12.	67148 Bushing—Spindle
	13.	67147 Spindle—Bit
	14.	10902 Ball—5/32" Dia. (Screwdriver - Use large hole in spindle)
		10303 Ball—1/8" Dia. (Quick Change - Use small hole in spindle)
	15.	10303 Ball—1/8" Dia. (9)*
	16.	66055 Plug
	17.	66063 Ring—Retaining
	18.	10306 Ball—3/16" Dia. (3)*
	19.	10901 Ball—3/32" Dia. (4)*
	20.	68001 Spindle—Clutch
	21.	68014 Washer—Thrust
	22.	66064 Bearing—Thrust

Fig. No.	Part No.	Description
	23.	66053 Washer—Thrust
	24.	66052 Sleeve—Ball
	25.	66056 Spring—Compression
	26.	21493 Ring—Retaining
	27.	66051 Lock—Slide
	28.	66057 Spring—Compression
	29.	66048 Spring (Silver)(725, 800, 1000, 1100 RPM) (30-50 in-lb)
		66049 Spring (Blue)(1400, 1500 RPM)(15-35 in-lb)
		66050 Spring (Green)(2600, 2800 RPM)(5-20 in-lb)
	30.	66047 Washer—Adjustment
	31.	66046 Nut—Adjustment
	32.	21493 Ring—Retaining

Items Not Shown:
 2366 Wrench—Clutch Adjustment

Complete Assemblies:
 67983 Ass'y—Torque Control Clutch Quick Change
 (Includes Fig's. 7-32)
 67984 Ass'y—Torque Control Clutch Screwdriver
 (Includes Fig's. 5, 11-32)

*Order Quantity As Required
**FURNISH CATALOG, SERIAL,
 AND MODEL NUMBER WHEN
 ORDERING PARTS**

**SIoux
 TOOLS INC.**

250 SNAP-ON DRIVE ■ PO BOX 1596 ■ MURPHY, NC 28906 ■ USA ■

Printed In U.S.A.