

Direct, Positive, Positive "A" Clutches

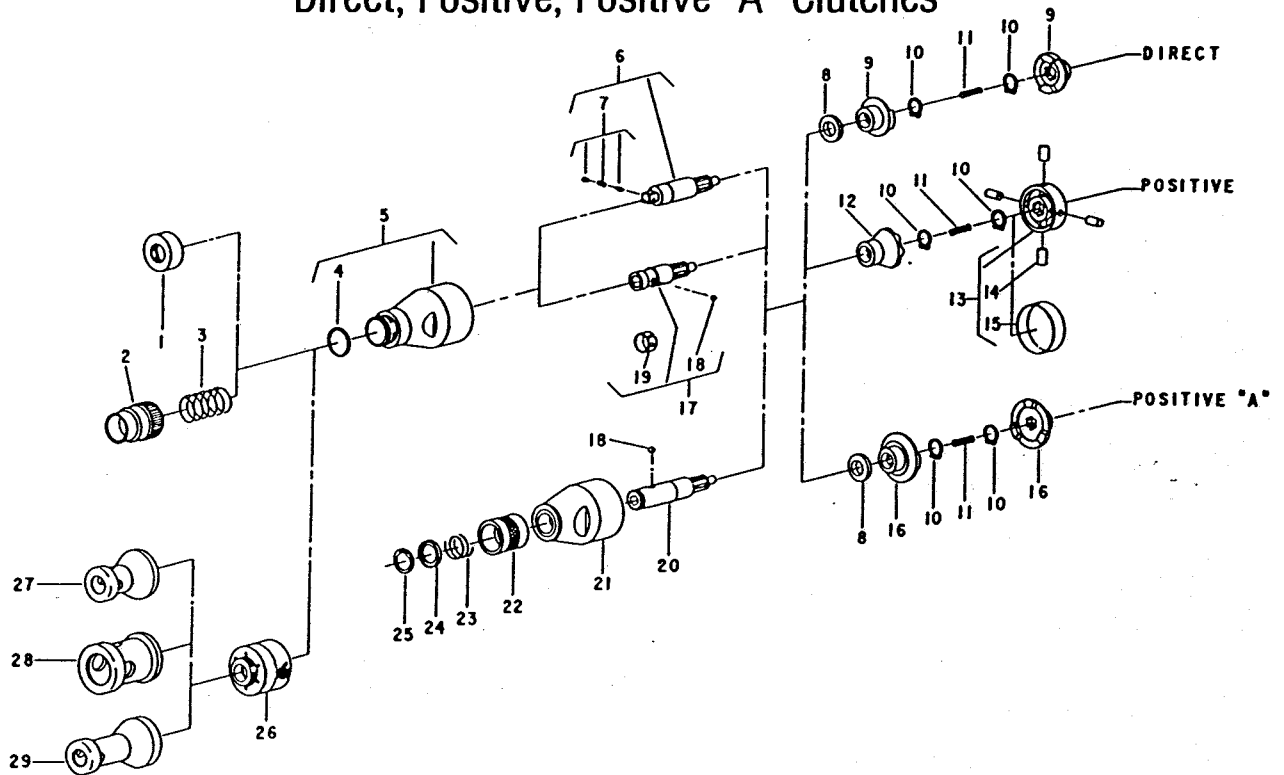


Figure	Part No.	Name	Figure	Part No.	Name
1	54076	Protector—Thread	17	63447	Ass'y—Drive Spindle (Screwdriver)
2	44520	Retainer—Finder (Screwdriver)	18	10902	Ball—Retainer (Screwdriver and Quick Change)
3	41251	Spring (Screwdriver)	19	25854	Ring—Ball Retainer (Screwdriver)
4	14281	Ring—"O"	20	63448	Ass'y—Drive Spindle (Quick Change) (Includes Figs. 18, 22-25)
5	53100	Case—Clutch	21	54469	Case—Clutch (Quick Change)
6	63449	Ass'y—Drive Spindle (1/4" sq.) (Nutrunner)	22	54468	Retainer—Ball (Quick Change)
	63450	Ass'y—Drive Spindle (3/8" sq.) (Nutrunner)	23	21406	Spring (Quick Change)
7	33827	Ass'y—Socket Retainer (1/4" sq.) (Nutrunner)	24	44660	Ring—Guide (Quick Change)
	33465	Ass'y—Socket Retainer (3/8" sq.) (Nutrunner)	25	21501	Ring—Retaining (Quick Change)
8	44663	Spacer (Direct and Positive "A")	26	53511	Ass'y—Depth Locator Base
9	64039	Clutch—Direct (2)*	27	54103	Nose Piece—Round Locator
10	21500	Ring—Retainer (2)*		14109	Cap—End
11	21379	Spring	28	54104	Nose Piece—Fastener Locator
12	64040	Clutch—Positive		14110	Cap
13	33630	Ass'y—Roller Cage	29	54241	Nose Piece—Long Round Locator
14	34856	Roller (4)*		14109	Cap—End
15	34854	Ring—Roller Retainer			
16	44662	Clutch—Positive "A" (2)*			

*Order Quantity As Needed

COMPLETE ASSEMBLY

63481	Ass'y—Complete Clutch (Screwdriver) (Figs. 1-5, 17, 8-11)	Direct Clutch	63487	Ass'y—Complete Clutch (Nutrunner 1/4" sq.) (Figs. 1, 4-7, 10-15)	Positive "A" Clutch
63482	Ass'y—Complete Clutch (Quick Change) (Figs. 8-11, 18, 20-25)		63488	Ass'y—Complete Clutch (Nutrunner 3/8" sq.) (Figs. 1, 4-7, 10-15)	
63483	Ass'y—Complete Clutch (Nutrunner 1/4" sq.) (Figs. 1, 4-11)		63489	Ass'y—Complete Clutch (Screwdriver) (Figs. 1-5, 8, 10, 11, 16, 17)	
63484	Ass'y—Complete Clutch (Nutrunner 3/8" sq.) (Figs. 1, 4-11)		63490	Ass'y—Complete Clutch (Quick Change) (Figs. 8, 10, 11, 16, 18, 20-25)	
63485	Ass'y—Complete Clutch (Screwdriver) (Figs. 1-5, 10-15, 17)		63491	Ass'y—Complete Clutch (Nutrunner 1/4" sq.) (Figs. 1, 4-8, 10, 11, 16)	
63486	Ass'y—Complete Clutch (Quick Change) (Figs. 10-15, 18, 20-25)	63492	Ass'y—Complete Clutch (Nutrunner 3/8" sq.) (Figs. 1, 4-8, 10, 11, 16)		