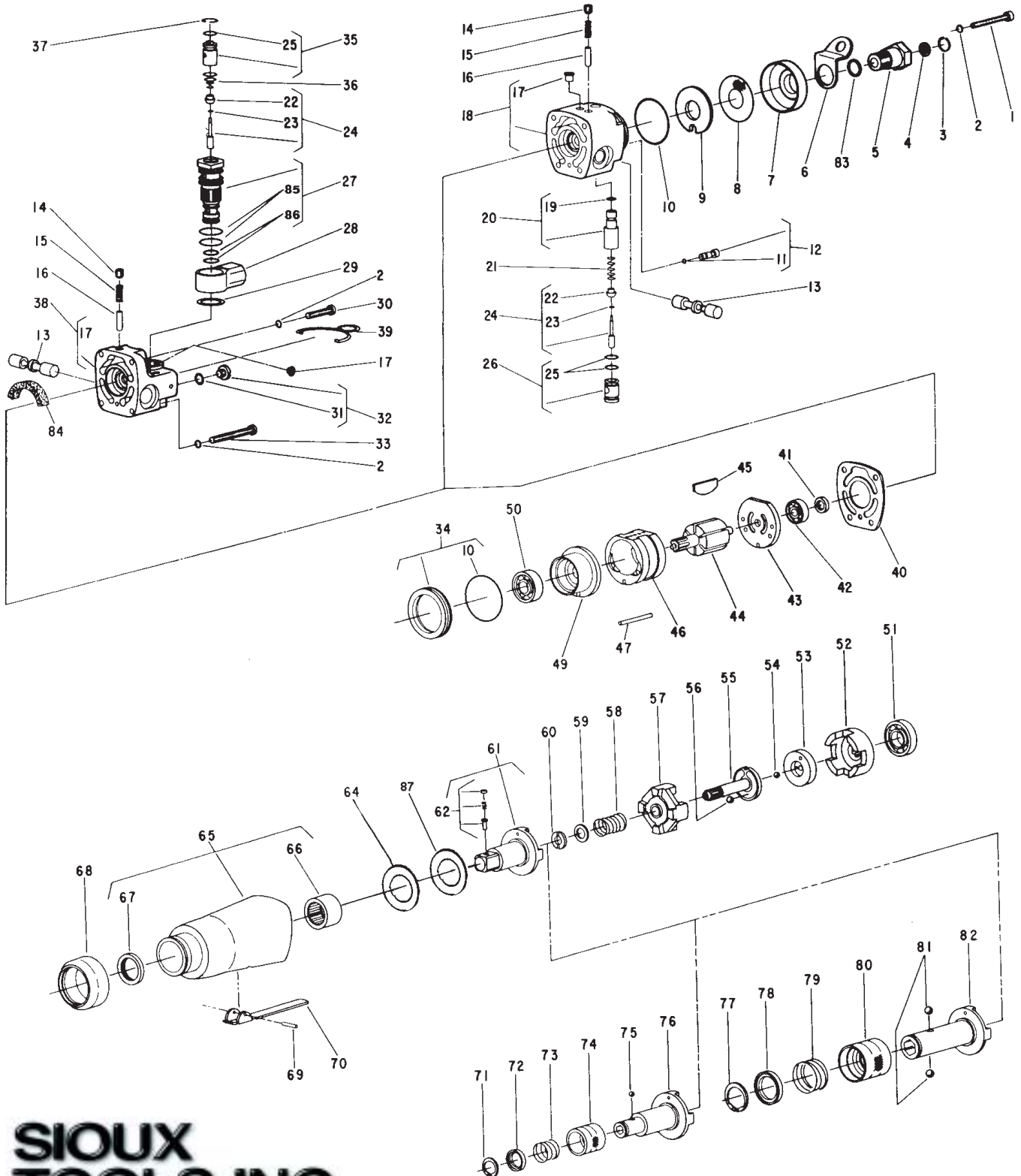




PARTS LIST FOR 4090, 4091, 4093, 4094 AIR IMPACT WRENCHES AND 4092, 4095, 4096 SCREW DRIVERS



SIoux
TOOLS INC.

250 SNAP-ON DRIVE ■ PO BOX 1596 ■ MURPHY, NC 28906 ■ USA ■



PARTS LIST FOR 4090, 4091, 4093, 4094 AIR IMPACT WRENCHES AND 4092, 4095, 4096 SCREW DRIVERS

Fig. No.	Part No.	Name
1.	06603	Screw (#8-32 x 1-1/2)(4)*
2.	09712	Lock washer (#8)(4)*
3.	21541	Retainer
4.	30463	Screen
5.	53942	Adapter—Intake (Incl. Fig. 3, 4, & 78)
6.	35192	Bail
7.	44692	Deflector—Air
8.	30470	Screen
9.	14779	Gasket
10.	14313	Ring—"O" (2)*
11.	14349	Ring—"O"
12.	43518	Ass'y.—Valve Seat Retainer & "O" Ring
13.	44684	Valve—Reversing
14.	08001	Screw
15.	41213	Spring
16.	44682	Plunger—Reversing Valve
17.	30356	Fitting—Grease
18.	53947	Ass'y.—Back Cap (Incl. Fig. 5 & 10)
19.	14308	Ring—"O"
20.	43578	Ass'y.—Output Control & "O" Ring
21.	21372	Spring
22.	14325	Valve
23.	25957	Washer
24.	43515	Ass'y.—Valve
25.	14311	Ring—"O" (2)*
26.	43516	Ass'y.—Throttle Valve Seat & "O" Ring
27.	43547	Ass'y.—Valve Seat & "O" Rings
28.	13221	Swivel—Hose
29.	35030	Washer
30.	06605	Screw (#8-32 x 3/4")(2)*
31.	14291	Ring—"O"
32.	53300	Ass'y.—Locking Screw & "O" Ring
33.	06603	Screw (#8-32 x 1-1/2")(2)*
34.	63167	Ass'y.—Motor Location Sleeve & "O" Ring
35.	43548	Ass'y.—Output Control & "O" Ring
36.	41214	Spring
37.	21541	Ring—Retainer
38.	43536	Ass'y.—Back Cap.
39.	21447	Bail
40.	14777	Gasket
41.	30498	Seal
42.	10219	Bearing—Ball
43.	10553	Ass'y.—Rear End Plate
44.	44846	Rotor

Fig. No.	Part No.	Name
45.	33940	Vane—Rotor (Set of 6)
46.	44737	Cylinder
47.	30424	Pin—Alignment
49.	53214	Ass'y.—Front End Plate
40.	10221	Bearing—Ball
51.	10203	Bearing—Ball
52.	54810	Frame—Hammer
53.	44673	Bearing—Spindle Cam
54.	10306	Ball—3/16
55.	44309	Cam—Spindle
56.	10291	Ball—7/32
57.	11558	Hammer—Aux. Impact
58.	21404	Spring
59.	35094	Washer
60.	35093	Washer—Split (2)*
61.	54814	Anvil—1/2" Sq. Dr. (4091,4094)
	54813	Anvil—3/8" Sq. Dr. (4093, 4090)
62.	33465	Ass'y.—Socket Retainer (For 3/8" Sq.)(4090, 4093)
	43890	Ass'y.—Socket Retainer (For 1/2" Sq.)(4091, 4094)
64.	10053	Washer
65.	63124	Ass'y.—Hammer Case
66.	10056	Bearing—Needle
67.	30258	Seal
68.	14351	Protector—Rubber
69.	30632	Pin—Roll
70.	35191	Lever
71.	21501	Ring—Retainer (4093, 4095)
72.	44660	Ring—Guide
73.	21406	Spring (4092, 4095)
74.	44161	Retainer—Ball
75.	10902	Ball—5/32 (4092, 4095)
76.	54815	Anvil—1/4" Hex (4092, 4095)
77.	21524	Ring (4096)
78.	44239	Ring Guide (4096)
79.	21414	Spring (4096)
80.	44238	Retainer (4096)
81.	10299	Ball—1/4 (2)* (4096)
82.	54816	Anvil—7/16 Hex (4096)
83.	14312	Ring—"O"
84.	14093	Pad—Silencer (4090, 4091, 4092)
85.	14281	Ring—"O"
86.	14290	Ring—"O"
87.	10052	Bearing—Needle Thrust

*Order Quantity As Needed

FURNISH CATALOG, SERIAL, AND MODEL NUMBER
WHEN ORDERING PARTS

**SIoux
TOOLS INC.**

250 SNAP-ON DRIVE ■ PO BOX 1596 ■ MURPHY, NC 28906 ■ USA ■