

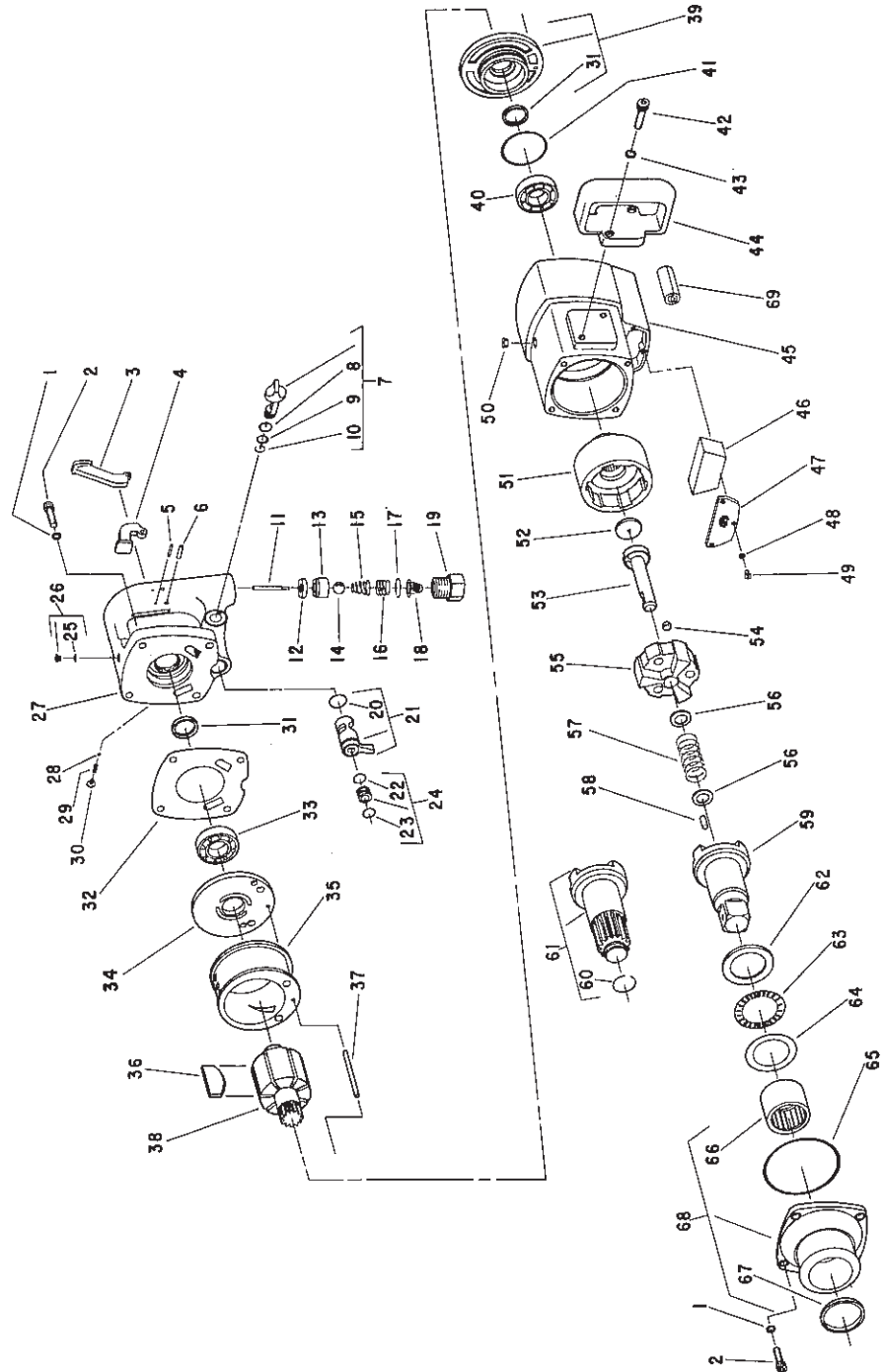


SIoux
TOOLS INC.

2901 FLOYD BOULEVARD ■ SIOUX CITY, IOWA 51102 ■

Form A518
Dated 8/81
E.D. 8/81

Parts List For 4055, 4056, 4057, 4058, 4059, & 4060 Air Impact Wrench



Furnish Catalog and Serial Number When Ordering Parts

Parts List For 4055, 4056, 4057, 4058, 4059, & 4060 Air Impact Wrench

Furnish Catalog and Serial Number When Ordering Parts

Fig- ure	Part No.	Name	Fig- ure	Part No.	Name
1	09768	Washer—Lock (8)*	37	54577	Pin—Guide
2	08845	Screw—Soc. Hd. Cap (8)*	38	54582	Rotor
3	11571	Trigger—External (4058) (4059) (4060)		13265	Plug-Rotor (5)*
4	11573	Trigger—Inside (4055) (4056) (4057)		13264	Plug-Rotor (2)*
5	30219	Pin—Roll	39	53808	Assy.—End Plate (Front)
6	30178	Pin—Roll	40	10283	Bearing—Ball
7	53807	Assy.—Control Output	41	14310	Ring—"O"
8	14312	Ring—"O"	42	08232	Screw—Soc. Hd. Cap (2)*
9	14290	Ring—"O"	43	09750	Washer—Lock (2)*
10	21751	Ring—Retaining	44	12390	Handle—Auxiliary
11	54579	Plunger—Valve	45	12394	Housing
12	04262	Seat—Throttle Valve	46	14150	Pad—Silencer
13	13289	Retainer—Valve Seat	47	30771	Screen—Exhaust
14	10904	Ball—Steel 9/16" Dia.	48	09712	Washer—Lock (3)*
15	41302	Spring—Valve	49	06650	Screw—Pan Hd. (3)*
16	41231	Spring	50	30246	Plug—Pipe
17	21512	Ring—Retaining		40019	Hanger—Eyebolt
18	33736	Assy.—Screen	51	54570	Driver—Hammer
19	54580	Bushing—Air Inlet	52	54576	Washer—Thrust
20	14378	Ring—"O"	53	54573	Cam
21	53809	Assy.—Reversing Valve	54	10293	Ball—Steel 13/32" Dia.
22	14340	Ring—"O"	55	54571	Hammer
23	14309	Ring—"O"	56	54578	Washer (2)*
24	53810	Assy.—Sleeve Seal	57	41286	Spring
25	14369	Ring—"O"	58	30458R	Pin
26	44253	Oiler Screw	59	54574	Anvil 1" Sq. (4055) (4058)
27	53811	Handle—Includes Figs. 26 & 31		54596	Anvil 1" Sq. (6" Ext.) (4056) (4059)
28	10900	Ball—Steel 9/64" Dia.	60	21538	Ring—Soc. Retainer (4057) (4060)
29	21432	Spring	61	54575	Assy.—Anvil Spline (4057) (4060)
30	07202	Screw—Phil. Rd. Hd.	62	54572	Washer—Thrust
31	30768	Seal (2)*	63	10032	Bearing—Needle
32	05018	Gasket	64	10033	Seat—Needle Bearing
33	10238	Bearing—Ball	65	04268	Ring—"O"
34	11430	End Plate—Rear	66	10067	Bearing—Roller
35	54790	Cylinder	67	30767	Seal
36	53812	Vane—Rotor (Set of 7)	68	53788	Assy.—Hammer Case
			69	14154	Liner—Silencer (3)*
			NS	14319	Ring—"O"—For 54574, 54596 & 54575 Anvils
			NS	34665	Retainer Pin —For 54574 & 54596 Anvils
			NS	54834	Retainer Pin For 54575

NS—Not Shown

*Order Quantity As Needed



**SIoux
TOOLS INC.**

2901 FLOYD BOULEVARD ■ SIOUX CITY, IOWA 51102 ■

PRINTED IN U.S.A.