

# SIoux



# TOOLS

## No. 1445 1/4" Air Drill

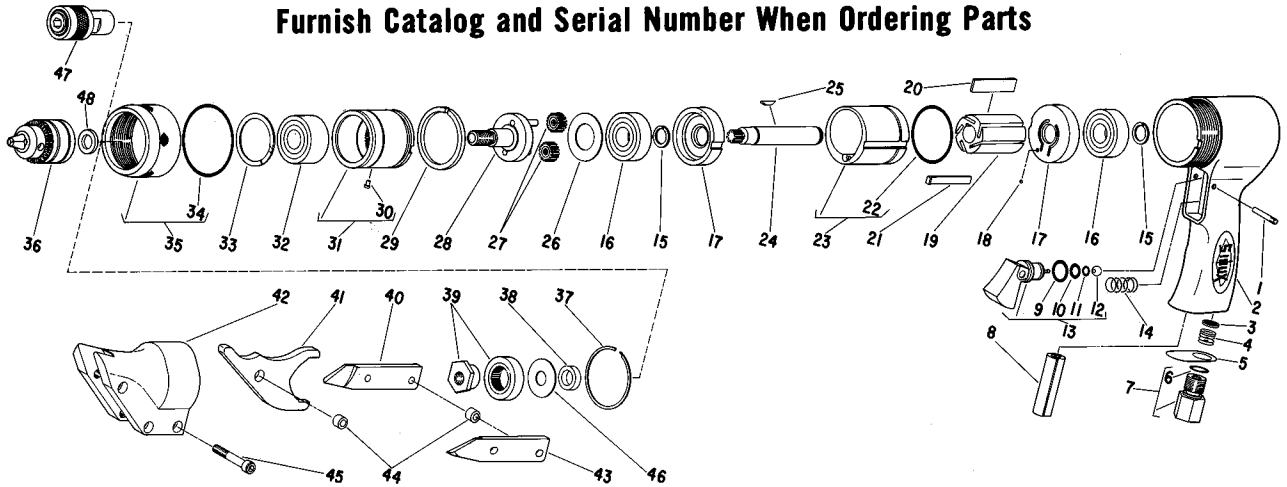
## No. 1446 Air Shear

## No. 1447 Screwdriver

## No. 1448 3/8" Air Drill

Ser. No's Starting With "B"

Furnish Catalog and Serial Number When Ordering Parts



| Fig-ure | Part No. | Name                             |
|---------|----------|----------------------------------|
| 1       | 30322    | Pin—Groove                       |
| 2       | 12416    | Housing                          |
| 3       | 30463    | Screen                           |
| 4       | 41220    | Spring                           |
| 5       | 30717    | Screen—Exhaust                   |
| 6       | 14290    | Ring—"O"                         |
| 7       | 53489    | Assy.—Adapter                    |
| 8       | 14123    | Pad—Silencer                     |
| 9       | 14312    | Ring—"O"                         |
| 10      | 14311    | Ring—"O"                         |
| 11      | 14323    | Ring—"O" (on earlier tools only) |
| 12      | 04241    | Ball                             |
| 13      | 53464    | Assy.—Trigger                    |
| 14      | 41295    | Spring                           |
| 15      | 21781    | Ring—Retaining (2)*              |
| 16      | 10275    | Bearing—Ball (2) *               |
| 17      | 10542    | Plate—End (2) *                  |
| 18      | 10298    | Ball                             |
| 19      | 10534    | Rotor                            |
| 20      | 53490    | Assy.—Vane (Set of 5)            |
| 21      | 35336    | Key                              |
| 22      | 14313    | Ring—"O"                         |
| 23      | 53984    | Cylinder                         |
| 24      | 54373    | Shaft                            |
| 25      | 30001    | Key—Woodruff                     |
| 26      | 25469    | Spacer                           |
| 27      | 53468    | Assy.—Idler Gear (2)*            |
| 28      | 54374    | Spindle                          |
| 29      | 21782    | Ring—Retaining                   |

| Fig-ure | Part No. | Name  |
|---------|----------|---|
| 30      | 30375    | Fitting—Grease                              |
| 31      | 53488    | Assy.—Ring Gear                             |
| 32      | 10276    | Bearing—Ball                                |
| 33      | 21783    | Ring—Retaining                              |
| 34      | 04206    | Ring—"O"                                    |
| 35      | 53529    | Assy.—Lock Ring (1445)                      |
|         | 53757    | Assy.—Lock Ring (1446)                      |
|         | 53758    | Assy.—Lock Ring (1447)                      |
|         | 53759    | Assy.—Lock Ring (1448)                      |
| 36      | 21121    | Chuck 1/4" (1445)                           |
|         | 30722    | Key—Chuck (1445) (Not Shown)                |
|         | 21129    | Chuck 3/8" (1448)                           |
|         | 30262    | Key—Chuck (1448) (Not Shown)                |
| 37      | 21788    | Ring—Retaining (1446)                       |
| 38      | 54497    | Spacer (1446)                               |
| 39      | 53614    | Assy.—Eccentric (1446)                      |
| 40      | 54501    | Knife—Side (Right) (1446)                   |
| 41      | 54499    | Blade—Center (1446)                         |
| 42      | 12598    | Housing—Shear (1446)                        |
| 43      | 54500    | Knife—Side (Left) (1446)                    |
| 44      | 54502    | Bushing—Spacer (2)* (1446)                  |
| 45      | 07102    | Screw—Socket Hd. Cap (3)* (1446)            |
| 46      | 35308    | Washer (1446)                               |
| 47      | 2352     | 1/4" Hex. Adapter (1447)                    |
| 48      | 44122    | Spacer—Chuck (1448)                         |
|         | 30096    | Wrench—Allen (1446) (Not Shown)             |
|         |          | Complete Assy.                              |
|         | 53974    | Assy.—Housing (Incl. Figs. 1-14)            |
|         | 53609    | Assy.—Shear Head (Incl. Figs. 39-45) (1446) |

\*Order Quantity Needed.

# SIoux TOOLS INC.