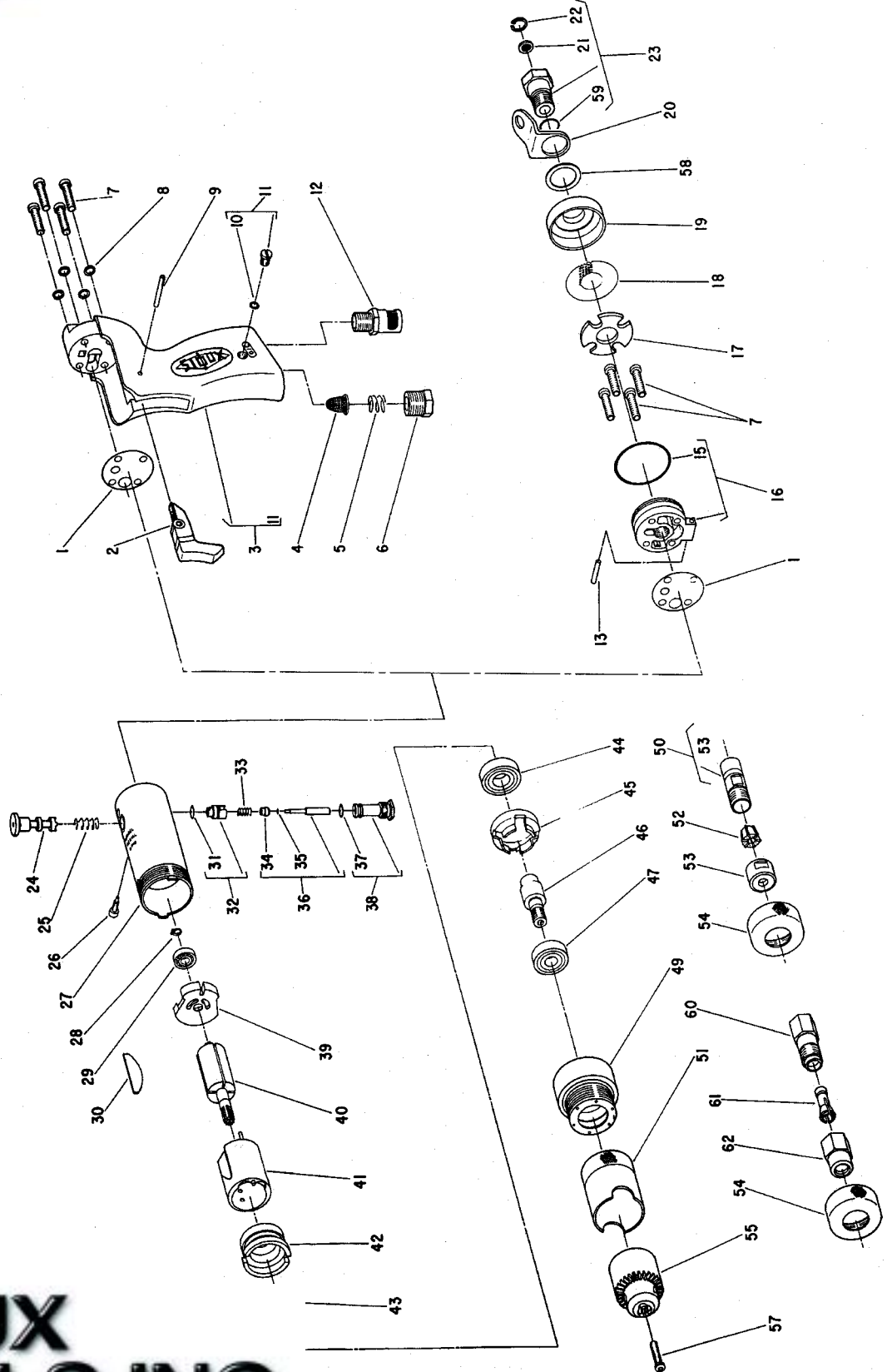




**PARTS LIST FOR  
NOS. L1910, L1940, L2910, P1910, P1940,  
& P2910 HIGH SPEED GRINDER  
Serial Starting With "J", "K", & "L"**

Form A172F  
Date 9-97/A  
Page 1 of 2



**SIoux  
TOOLS INC.**

250 SNAP-ON DRIVE ■ PO BOX 1596 ■ MURPHY, NC 28906 ■ USA ■

Printed In U.S.A.



**PARTS LIST FOR  
NOS. L1910, L1940, L2910, P1910, P1940, & P2910 HIGH SPEED GRINDER  
Serial Starting With "J", "K", & "L"**

Fig. No.	Part No.	Description
1.	14734	Gasket
2.	33599	Trigger
3.	33602	Handle
4.	33993	Screen-Air
5.	21417	Spring
6.	44100	Bushing
7.	07140	Screw (4)*
8.	09724	Washer-Lock (4)*
9.	30251	Pin
10.	14369	Ring-"O"
11.	43553	Ass'y-Oiler Screw & "O" Ring
12.	43543	Ass'y-Silencer
13.	30362	Pin-Roll
14.	25988	Lever
15.	14313	Ring-"O"
16.	53945	Ass'y-End Cap & "O" Ring (Includes Fig. 23)
17.	14764	Felt
18.	30470	Screen
19.	14125	Deflector
20.	35192	Bail
21.	30463	Screen
22.	21541	Ring-Retainer
23.	43154	Ass'y-Adapter & Screen (Serial Nos. Up To "K")
	53942	Ass'y-Adapter & Screen (Includes Fig. 59)(Serial "K")
24.	44426	Spool-Valve (Reversing Only) (Non-Locking)
	44316	Spool-Valve (Reversing Only)(Locking)
25.	21427	Spring (Reversing Only)
26.	06502	Screw-Retaining (Reversing Only)
27.	43456	Housing (Reversing)
	44666	Housing (Single Rotation, Right Hand)
28.	21491	Ring-Retaining
29.	10230	Bearing-Ball
30.	33737	Vane-Rotor (Set of 4)
31.	14394	Ring-"O"
32.	43457	Ass'y-Speed Control & "O" Ring
33.	21429	Spring
34.	14350	Valve
35.	25957	Washer
36.	43462	Ass'y-Valve
37.	14291	Ring-"O"
38.	43508	Ass'y-Valve Seat & "O" Ring
39.	13161	Plate-Upper End

Fig. No.	Part No.	Description
40.	44511	Rotor (Reversing)
	44513	Rotor (Single Rotation, Right Hand)
41.	33738	Ass'y-Cylinder & Pins (L2910 & P2910)
	33740	Ass'y-Cylinder & Pins (L1910, L1940, P1910 & P1940)
42.	13173	Plate-Lower End
43.	10220	Bearing-Ball
44.	10239	Bearing-Ball
45.	44089	Spacer
46.	44090	Spindle-Chuck (L1910, L2910, P1910 & P2910)
	54525	Spindle-Chuck (L1940 & P1940)
47.	10240	Bearing-Ball
49.	54424	Case-Gear
50.	21086	Ass'y-Collet Chuck & Nut (L1940 & P1940) (Up to Serial "L")
	30445	Wrench-1/2" Open End
	30446	Wrench-5/8" Open End
51.	44091	Shield-Chuck
52.	21087	Collet-.198" - .250" (L1940 & P1940)(Up to Serial "L")
	21088	Collet-.146" - .198" (L1940 & P1940)(Up to Serial "L")
	21089	Collet-.094" - .146" (L1940 & P1940)(Up to Serial "L")
53.	21093	Nut-Collet (L1940 & P1940)(Up to Serial "L")
54.	44171	Ring-Grip (L1940)
55.	21077	Chuck
	30000	Key-Chuck
57.	06602	Screw
58.	35260	Washer
59.	14312	Ring-"O"
60.	21096	Body-Collet (L1940 & P1940)(Serial "I")
61.	44440	Collet-1/4" (L1940 & P1940)(Serial "L")
	44523	Collet-3/16" (L1940 & P1940)(Serial "L")
	44522	Collet-1/8" (L1940 & P1940)(Up to Serial "L")
62.	21097	Nut-Collet (L1940 & P1940)(Up to Serial "L")
	30465	Wrench-9/16" Open End (Serial "L")
	30466	Wrench-11/16" Open End (Serial "L")

**COMPLETE HANDLE ASS'Y**

- 33637 Ass'y-Pistol Handle Complete
- 43464 Ass'y-Lever Handle Complete

\*Order Quantity As Required

**FURNISH CATALOG, SERIAL, AND MODEL NUMBER WHEN ORDERING PARTS**

