



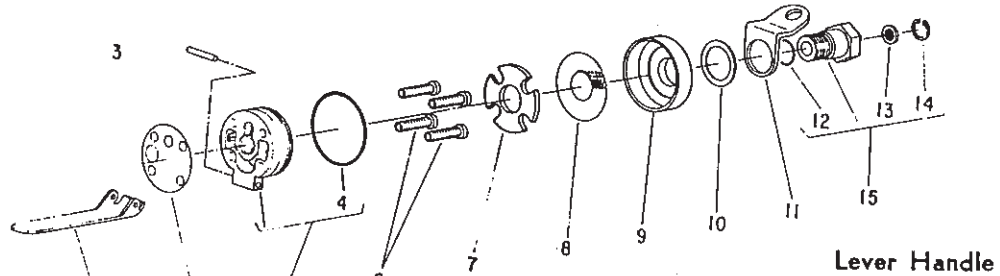
**SIoux
TOOLS INC.**

2901 FLOYD BOULEVARD ■ SIOUX CITY, IOWA 51102 ■

Form A147E
Dated 5/92

**Parts List for
2 Series Multi-Assembly Tools
Air Angle Screw Drivers, Nut Runners and Drills**

[Serials Starting With "D", "E" & "F"]

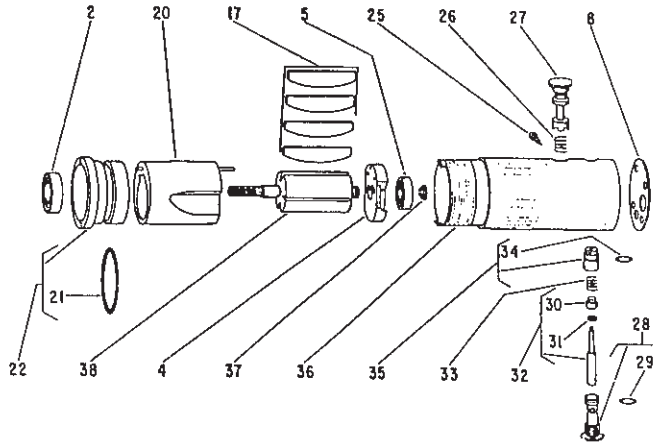


| Fig- ure | Part No. | Name |
|-------------|-------------|------------------------------------|
| 1 | 25988 | Lever—Valve |
| 2 | 14734 | Gasket |
| 3 | 30362 | Pin—Roll |
| 4 | 14313 | Ring—"O" |
| 5 | 53945 | Assy.—End Cap (Incl's. Fig. 15) |
| 6 | 07140 | Screw #10—24 x 7/8" (4) * |

| Fig- ure | Part No. | Name |
|-------------|-------------|---------------------|
| 7 | 14764 | Felt |
| 8 | 30470 | Screen |
| 9 | 14125 | Deflector |
| 10 | 35260 | Washer |
| 11 | 35192 | Bail |
| 12 | 14312 | Ring—"O" (Ser. "E") |

| Fig- ure | Part No. | Name |
|-------------|-------------|--------------------------------------|
| 13 | 30463 | Screen |
| 14 | 21541 | Ring—Retaining |
| 15 | 43154 | Assy.—Adaptor & Screen (Ser. "D") |
| | 53942 | Assy.—Adaptor & Screen (Ser. "E") |

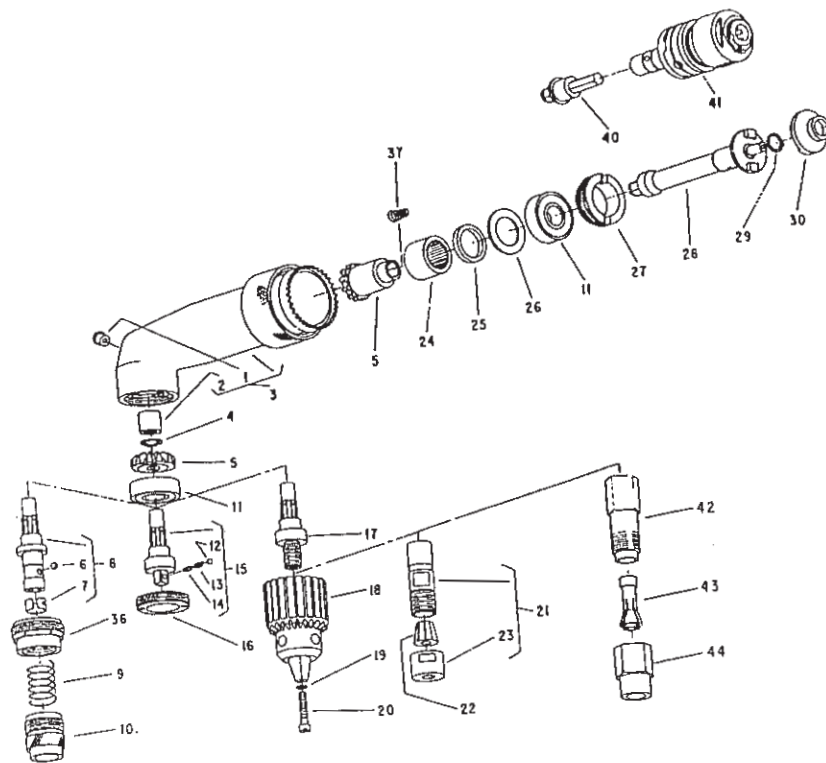
Air Motors



| Fig- ure | Part No. | Name |
|-------------|-------------|-----------------------------------------------------|
| 2 | 10220 | Bearing—Ball |
| 4 | 13161 | Plate—Upper End |
| 5 | 10230 | Bearing—Ball |
| 8 | 14734 | Gasket |
| 17 | 33737 | Vane—Rotor (Set of 4) |
| 20 | 33738 | Ass'm.—Cylinder (Reversible) |
| | 33740 | Ass'm.—Cylinder (Single Rotation, Right Hand) |
| 21 | 14342 | Ring—"O" |
| 22 | 33741 | Ass'm.—Lower End Plate |
| 25 | 06502 | Screw—Retaining |
| 26 | 21427 | Spring |
| 27 | 44426 | Spool—Valve (Non-Locking) |
| | 44316 | Spool—Valve (Locking) |

| Fig- ure | Part No. | Name |
|-------------|-------------|------------------------------------------|
| 28 | 43508 | Ass'm.—Valve Seat & "O" Ring |
| 29 | 14291 | Ring—"O" |
| 30 | 14350 | Valve |
| 31 | 25957 | Washer |
| 32 | 43462 | Ass'm.—Valve |
| 33 | 21429 | Spring |
| 34 | 14394 | Ring—"O" |
| 35 | 43457 | As'm.—Speed Control "O" Ring |
| 36 | 43456 | Housing (Reversible) |
| | 44666 | Housing (Single Rotation, Right Hand) |
| 37 | 21491 | Ring—Retaining |
| 38 | 44511 | Rotor (Reversible) |
| | 44513 | Rotor (Single Rotation, Right Hand) |

| Fig- ure | Part No. | Name |
|--------------------------|-------------|---------------------------------------------------------------|
| 44903 | | Rotor (Reversible) (1600 R.P.M. only) |
| 44904 | | Rotor (Single Rotation) (2000 R.P.M. only) |
| COMPLETE ASSEMBLY | | |
| 43459 | | Ass'm.—Reversible Motor Complete |
| 43737 | | Ass'm.—Reversible Motor Complete (1600 R.P.M. only) |
| 43458 | | Ass'm.—Right Rotation Motor Complete |
| 43738 | | Ass'm.—Right Rotation Motor Complete (2000 R.P.M. only) |



Angle Tools

| Fig- Part ure No. | Name | Fig- Part ure No. | Name | Fig. Part ure No. | Name |
|----------------------|------------------------------------------------------------------------------------|----------------------|------------------------------------------------------------------------------------------------------------|----------------------|-------------------------------------------------------------------------------------|
| 1 | 30356 Fitting—Grease | 21 | 21086 Ass'm.—Collet Chuck & Nut (Up to Ser. "F") | 43565 | COMPLETE ASSEMBLY Ass'm.—Long Angle Head (1/4" Sq. Nut Runner Direct Clutch) |
| 2 | 10012 Bearing—Needle | 30445 | Wrench—Collet (1/2" Open End) (Up to Ser. "F") | 43567 | Ass'm.—Long Angle Head (3/8" Sq. Nut Runner—Direct Clutch) |
| 3 | 43794 Ass'm.—Long Housing 43795 Ass'm.—Short Housing | 30446 | Wrench—Collet (5/8" Open End) (Up to Ser. "F") | 53112 | Ass'm.—Long Angle Head (Screw Driver—Adj. Clutch—1300-1700-1900-2500 R.P.M.) |
| 4 | 21545 Ring—Retainer | 22 | 21087 Collet—.198"-.250" (Up to Ser. "F") | 43569 | Ass'm.—Short Angle Head (Screw Driver—Direct Clutch) |
| 5 | 19721A Ass'm.—Gear & Pinion 19721 Ass'm.—Gear & Pinion (Used on Earlier Models) | 23 | 21093 Nut—Collet (Up to Ser. "F") | 43571 | Ass'm.—Short Angle Head (1/4" Drill) |
| 6 | 10902 Ball—Steel (Screw Driver) | 24 | 10049 Bearing—Needle | 43572 | Ass'm.—Short Angle Head (5/16" Drill) |
| 7 | 25854 Ring—Ball Retaining (Screw Driver) | 25 | 44780 Spacer (Use Only With 19721) | 43751 | Ass'm.—Short Angle Head (1/4" Sq. Nut Runner—Direct Clutch) |
| 8 | 43562 Ass'm.—Drive Socket (Screw Driver) | 26 | 35214 Washer | 43752 | Ass'm.—Short Angle Head (3/8" Sq. Nut Runner Direct Clutch) |
| 9 | 41251 Spring—Finder (Screw Driver) | 27 | 44775 Retainer—Bearing | 53110 | Ass'm.—Long Angle Head (1/4" Sq. Nut Runner—Adj. Clutch—1300-1700-1900-2500 R.P.M.) |
| 10 | 54128 Retainer—Finder (Screw Driver) | 28 | 33773 Connector (1/4" Sq. & 3/8" Sq. Nut Runner—Direct Clutch) | 53111 | Ass'm.—Long Angle Head (3/8" Sq. Nut Runner—Adj. Clutch—1300-1700-1900-2500 R.P.M.) |
| 11 | 10226 Bearing—Ball | 3774 | Connector (Screw Driver Direct Clutch) (Drill) | | |
| 12 | 34965 Plunger (1/4" Sq. Nut Runner) | 29 | 21500 Ring—Retaining | | |
| | 34666 Plunger (3/8" Sq. Nut Runner) | 30 | 34933 Clutch—Upper | | |
| 13 | 21391 Spring (1/4" Sq. Nut Runner) | 36 | 44036 Retainer—Bearing (Screw Driver) | | |
| | 21223 Spring (3/8" Sq. Nut Runner) | 37 | 21401 Spring | | |
| 14 | 34667 Retainer—Plunger (Nut Runner) | 40 | 54101 Connector (1/4" Sq. & 3/8" Sq. Nut Runner & Screw Driver—Adjustable Clutch) | | |
| 15 | 43563 Spindle—Tool (1/4" Sq. Nut Runner) | 41 | 53107 Ass'm.—Clutch (1/4" Sq. & 3/8" Sq. Nut Runner & Screw Driver—Adj. Clutch—1300-1700-1900-2500 R.P.M.) | | |
| | 43564 Spindle—Tool (3/8" Sq. Nut Runner) | 42 | 21096 Body—Collet (Ser. "F") | | |
| 16 | 44776 Retainer—Bearing (Drill) | 43 | 44446 Collet—1/4" (Ser. "F") | | |
| 17 | 22651 Spindle—Chuck | 44523 | Collet—3/16" (Ser. "F") | | |
| 18 | 21077 Chuck (5/16" Cap.) | 44522 | Collet—1/8" (Ser. "F") | | |
| | 30002 Key—Chuck | 44 | 21097 Nut—Collet (Ser. "F") | | |
| | 21084 Chuck (1/4" Cap.) | 30465 | Wrench (9/16" Open End) (Ser. "F") | | |
| | 30000 Key—Chuck | 30466 | Wrench (11/16" Open End) (Ser. "F") | | |
| 19 | 09712 Washer—Lock #8 (Drill) | | | | |
| 20 | 06602 Screw—#8 (Drill) | | | | |

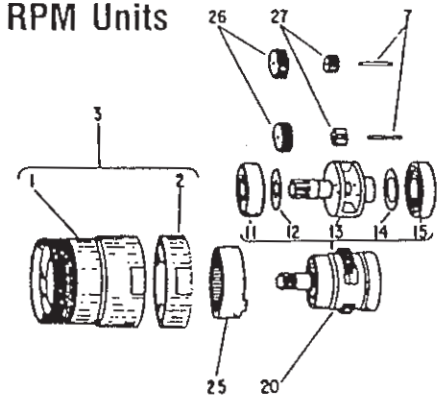


**SIoux
TOOLS INC.**

2901 FLOYD BOULEVARD ■ SIOUX CITY, IOWA 51102 ■

Single Reduction Gear Case 1600, 1900, 2000 & 2500 RPM Units

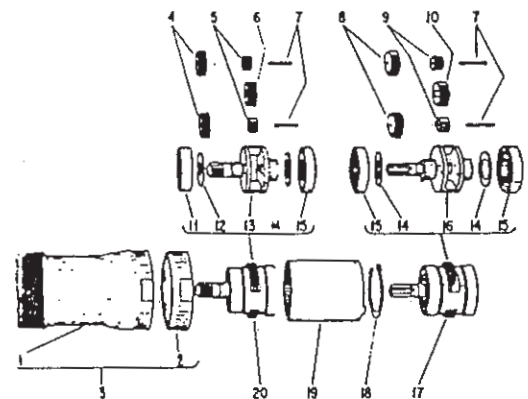
| Fig- Part ure No. | Name |
|----------------------|----------------------------------------|
| 1 44858 | Case—Gear |
| 2 44857 | Nut—Lock |
| 3 43712 | Assy.—Gear Case & Lock Nut |
| 7 30062 | Pin (2) |
| 11 10221 | Bearing—Ball |
| 12 25987 | Washer |
| 13 64165 | Carrier—Gear (1900-2500 RPM) |
| 22622 | Carrier—Gear (1600 & 2000 RPM) |
| 14 25439 | Washer |
| 15 10203 | Bearing—Ball |
| 20 33622 | Assy.—Planetary Gear (1900-2500 RPM) |
| 43742 | Assy.—Planetary Gear (1600 & 2000 RPM) |
| 25 19160 | Gear—Ring |
| 26 19314 | Gear—Idler (2) (1900 & 2500 RPM) |
| 27 19317 | Gear—Idler (2) (1600 & 2000 RPM) |



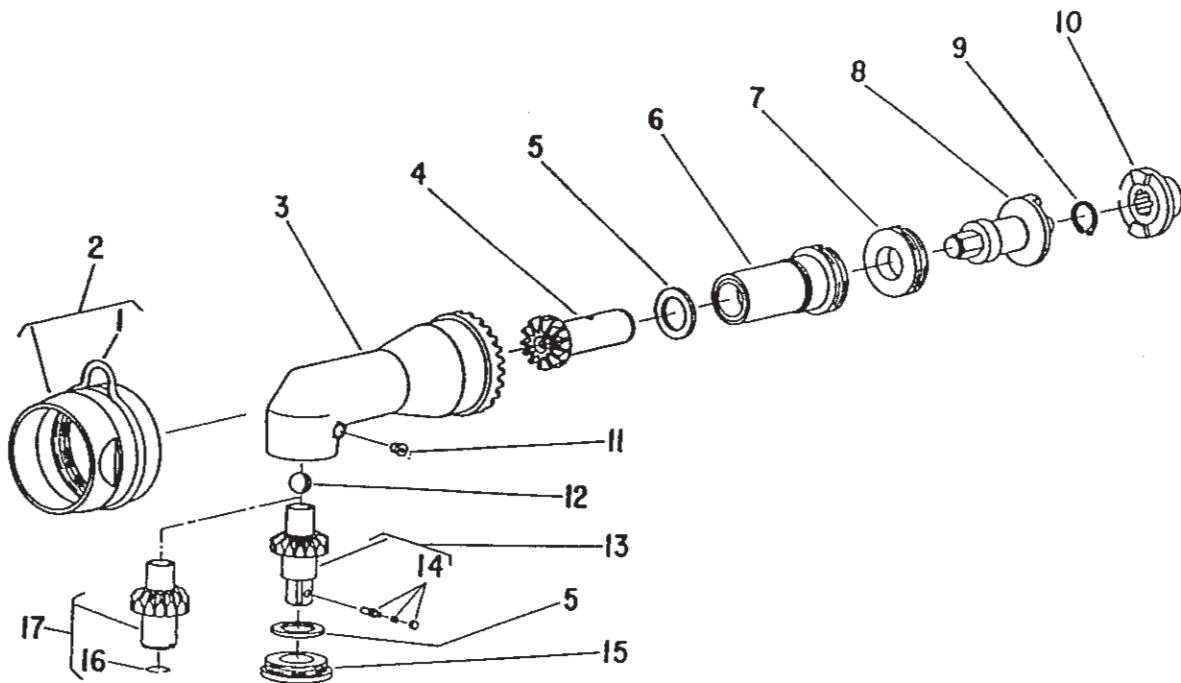
| COMPLETE ASSEMBLY | |
|-------------------|--------------------------------------------|
| 43708 | Assy.—Gear Case Complete (1900-2500 RPM) |
| 43892 | Assy.—Gear Case Complete (1600 & 2000 RPM) |

Double Reduction Gear Case 350, 450, 650, 850, 1300 & 1700 RPM Units

| Fig- Part ure No. | Name |
|----------------------|----------------------------------------------------|
| 1 44859 | Case—Gear |
| 2 44857 | Nut—Lock |
| 3 43711 | Assy.—Gear Case & Lock Nut |
| 4 19314 | Gear—Idler (2) (350-450-650-850 RPM) |
| 5 19315 | Gear—Idler (2) (1300 & 1700 RPM) |
| 6 19159 | Gear—Pinion (1300 & 1700 RPM) |
| 7 30062 | Pin (4) |
| 8 19314 | Gear—Idler (350-450 RPM) (2) |
| 9 19315 | Gear—Idler (2) (650-850-1300-1700 RPM) |
| 10 19159 | Gear—Pinion (650-850-1300-1700 RPM) |
| 11 10221 | Bearing—Ball |
| 12 25987 | Washer |
| 13 64165 | Carrier—Gear (350, 450, 650 & 850 RPM) |
| 64166 | Carrier—Gear (1300 & 1700 RPM) |
| 14 25439 | Washer (3) |
| 15 10203 | Bearing—Ball (3) |
| 16 64151 | Carrier—Gear (650, 850, 1300 & 1700 RPM) |
| 64160 | Carrier—Gear (350 & 450 RPM) |
| 17 33621 | Assy.—First Planetary Gear (650-850-1300-1700 RPM) |
| 63386 | Assy.—First Planetary Gear (350-450 RPM) |
| 18 21510 | Ring—Retainer |
| 19 19153 | Gear—Ring |
| 20 33622 | Assy.—Planetary Gear (350-450-650-850 RPM) |
| 33623 | Assy.—Planetary Gear (1300-1700 RPM) |



| COMPLETE ASSEMBLY | |
|-------------------|------------------------------------------|
| 43706 | Assy.—Gear Case Complete (650-850 RPM) |
| 43707 | Assy.—Gear Case Complete (1300-1700 RPM) |
| 43710 | Assy.—Gear Case Complete (350-450 RPM) |

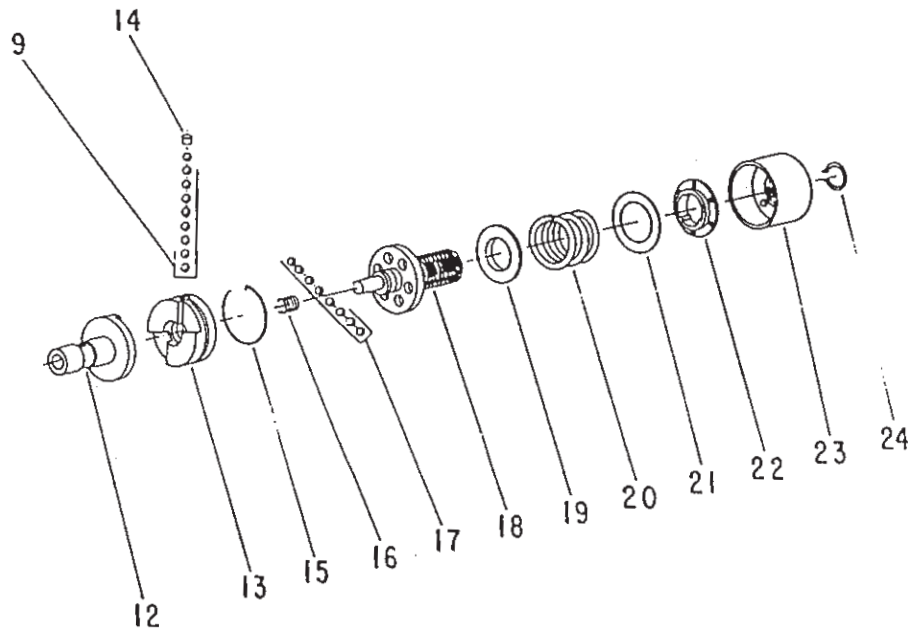


No. 2 Series Right Angle Attachment - 1" Diameter Stall Drive

| Fig- ure | Part No. | Name | Fig- ure | Part No. | Name |
|-------------|-------------|------------------------------------|-------------|-------------|--------------------------------------|
| 1 | 41248 | Bail | 13 | 53173 | Ass'm.—Tool Spindle (3/8" Sq.) |
| 2 | 53181 | Ass'm.—Lock Sleeve & Bail | | 53174 | Ass'm.—Tool Spindle (1/4" Sq.) |
| 3 | 11578 | Angle Head (Includes #11) | 14 | 33465 | Ass'm.—Socket Retainer (3/8" Sq.) |
| 4 | 19470 | Pinion | | 53347 | Ass'm.—Socket Retainer (1/4" Sq.) |
| 5 | 35283 | Spacer—Gear (2) | 15 | 54154 | Retainer—Bearing |
| 6 | 53171 | Ass'm.—Bearing Retainer & Bushings | 16 | 21764 | Ring--Wire |
| 7 | 54162 | Nut—Retaining | 17 | 53177 | Ass'm.—Tool Spindle (1/4" Hex) |
| 8 | 33774 | Ass'm.—Short Connector | | | |
| 9 | 21500 | Ring—Retaining | | | COMPLETE ASSEMBLY |
| 10 | 34933 | Clutch—Upper | | 53168 | Angle Ass'y 3/8" Sq. |
| 11 | 30375 | Fitting—Grease | | 53179 | Angle Ass'y. 1/4" Hex |
| 12 | 10322 | Ball | | 53176 | Angle Ass'y. 1/4" Sq. |

Adjustable Clutch

(Part No. 53107)



| Fig- Part ure No. | Name | Fig- Part ure No. | Name |
|----------------------|-----------------------------------------|----------------------|----------------------------------------------------------------------|
| 9 10902 | Ball—Steel (9)* | 20 41249 | Spring—Compression (For torque settings above 25 inch pounds) |
| 12 54077 | Bit Holder | 41284 | Spring—Compression (Green) (For torque setting below 25 inch pounds) |
| 13 54071 | Jaw—Clutch | 21 35273 | Washer |
| 14 54074 | Retainer—Ball | 22 54073 | Washer—Index |
| 15 21762 | Ring—Retaining (Includes Wire & Spiral) | 23 53095 | Nut—Adjusting |
| 16 41250 | Spring | 24 21774 | Ring—Retaining |
| 17 10291 | Ball—Steel (8)* | | |
| 18 22669 | Spindle—Clutch | | |
| 19 54072 | Guide—Spring | | |

*Order Quantity As Needed